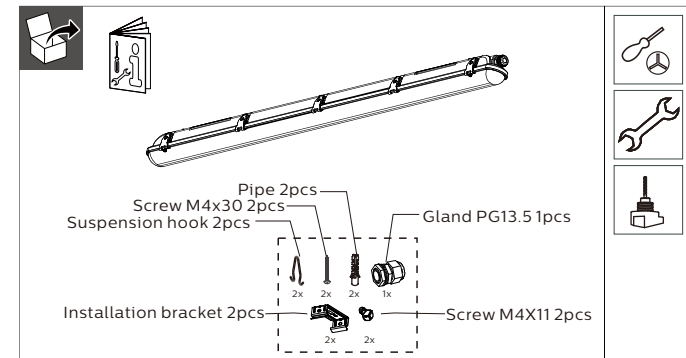
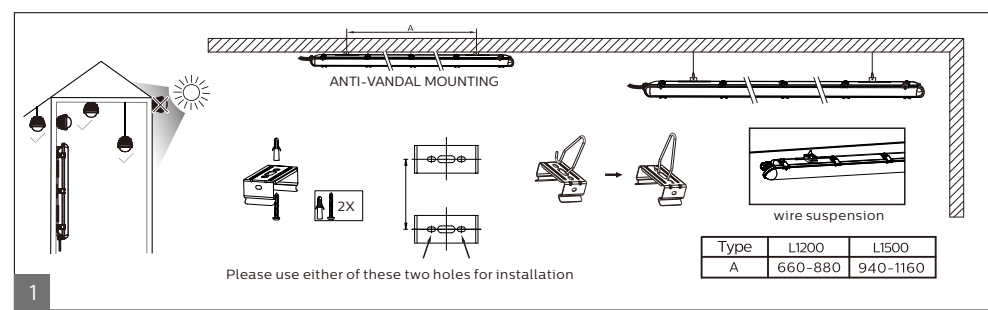
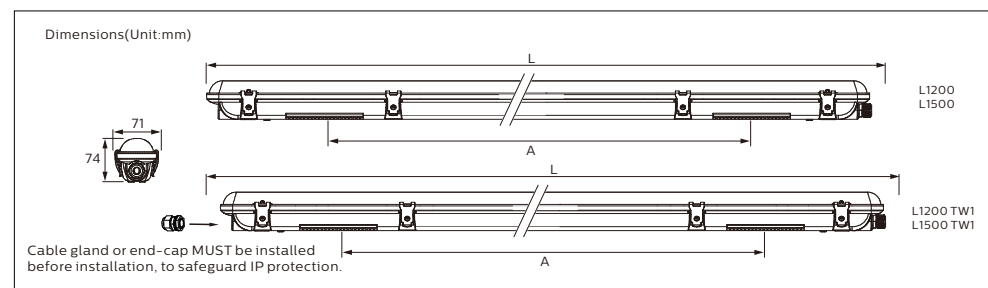


- Do not stare into LED light beam.
- The luminaire shall be installed by a qualified electrician and wired in accordance with the latest IEE electrical regulations or the national requirements.
- The light source contained in this luminaire shall only be replaced by the manufacturer or his service agent or a similar qualified person.
- Above average concentration of sulfur effects the useful lifetime of the product. E.g: Light color changes from white to blue. Typically in chicken & pig farms.
- For use in environments where an accumulation of conductive dust on the luminaire may be expected
- Do not install the luminaire on the location where it is exposed to heavily grease, esp. mineral oil and distillates (petroleum), heavy naphthenic treated with hydrogen.
- This product is not suitable for cold & humid storage areas, especially where obvious temperature gradients are present, such as ventilation opening, door, etc.
- Do not install the luminaire on locations where it is exposed to direct sunlight. UV radiation will damage the material over time resulting in loss of waterproof sealing and IP65 rating.
- Do not install the luminaire on the location where it is exposed to (animal) grease, oil, esp. cooking or mineral oil and distillates (petroleum), heavy naphthenic treated with hydrogen, or swimming pool applications (with chlorine present), or carwash (due to chemicals and/or salt presence).

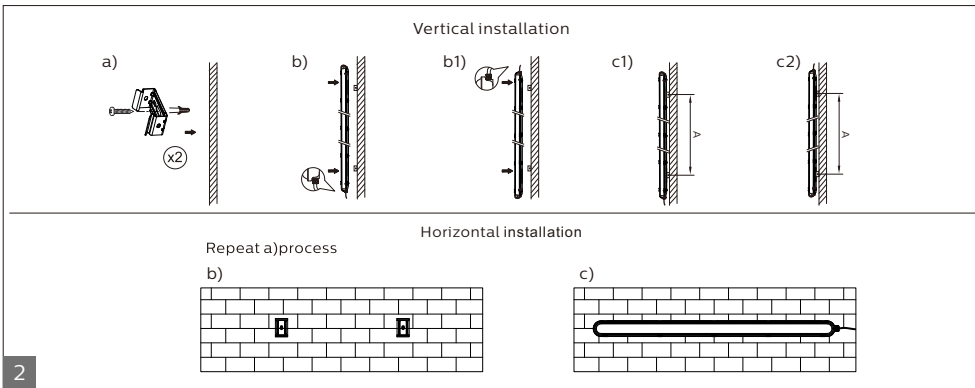


| Product Description                | CCT(K) | System light output(Lm) | P(W)        | Energy Efficiency Class of Light source | Dimensions (mm) |          | kg   |
|------------------------------------|--------|-------------------------|-------------|---|-----------------|----------|------|
|                                    |        |                         |             |   | L               | A        |      |
| WT065C LED29_48S/840 PSU L1200     |        | 2900/3600/4200/4800     | 23/30/35/42 | D                                       | 1207            | 660-880  | 1.15 |
| WT065C LED41_68S/840 PSU L1500     | 4000   | 4100/4800/5700/6800     | 28/35/42/50 | D                                       | 1507            | 940-1160 | 1.35 |
| WT065C LED29_48S/840 PSU L1200 TW1 |        | 2900/3600/4200/4800     | 23/30/35/42 | D                                       | 1214            | 660-880  | 1.3  |
| WT065C LED41_68S/840 PSU L1500 TW1 |        | 4100/4800/5700/6800     | 28/35/42/50 | D                                       | 1514            | 940-1160 | 1.5  |

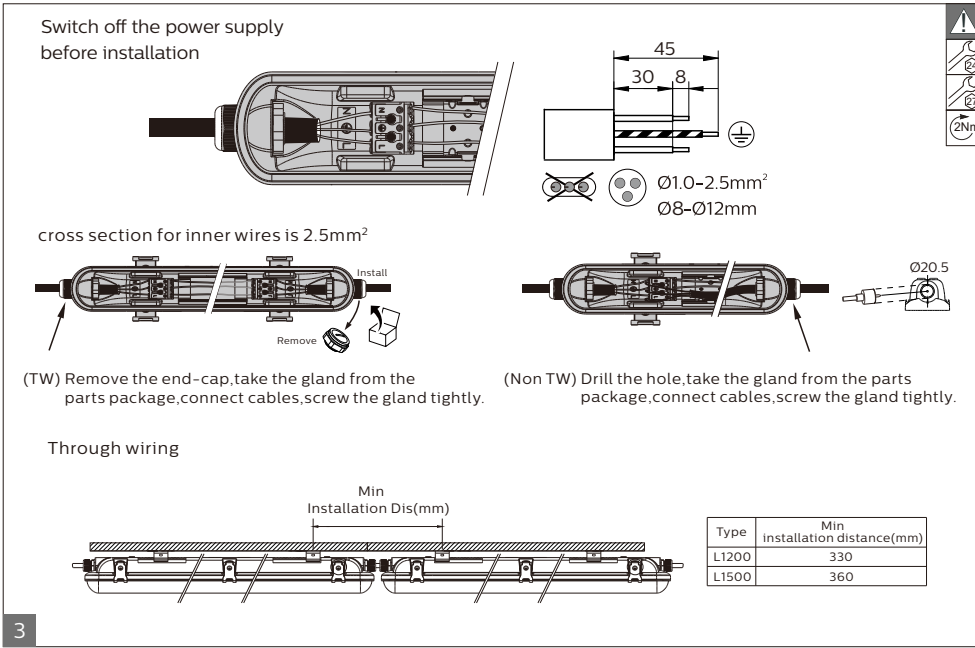


©01/2025 Signify Holding.  
 All rights reserved. This document contains information relating to the product portfolio of Signify which information may be subject to change. No representation or warranty as to the accuracy or completeness of the information included herein is given and any liability for any action in reliance thereon is disclaimed. The information presented in this document is not intended as any commercial offer and does not form part of any quotation or contract. Philips and the Philips Shield Emblem are registered trademarks of Koninklijke Philips N.V.. All other trademarks are owned by Signify Holding or their respective owners.

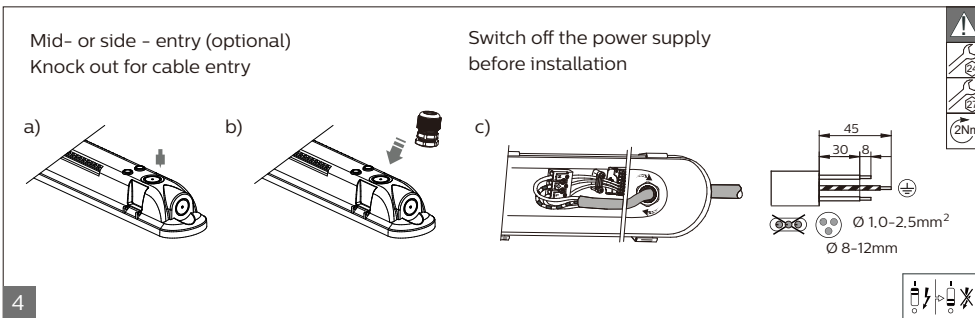




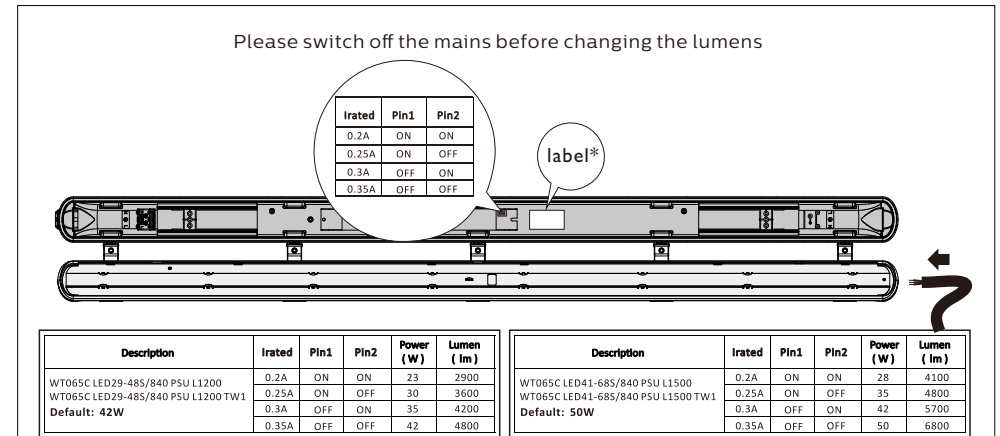
2



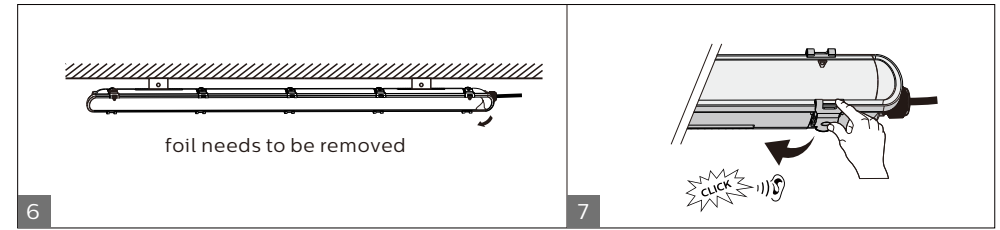
3



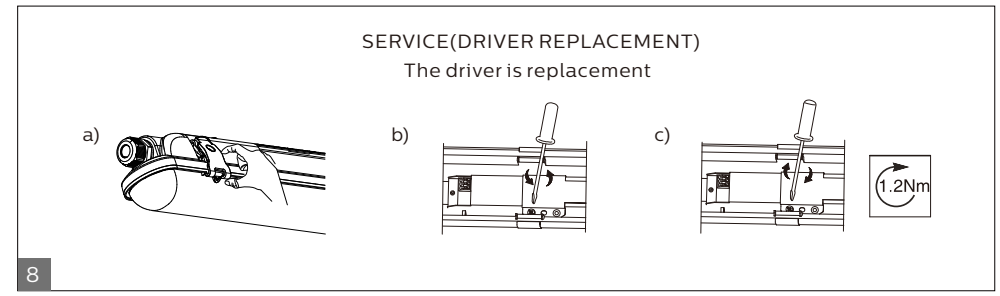
4



5



6



8

|                               | LED29_48S | LED41_68S |
|-------------------------------|-----------|-----------|
| I <sub>max</sub>              | 16.3      | 17.2      |
| T <sub>ref</sub> [µs]         | 167       | 172       |
| Max. Nr of products           |           |           |
| Drivers/ MCB16A type B [max.] | 52        | 36        |
| Drivers/ MCB10A type B [max.] | 33        | 23        |
| Drivers/ MCB16A type C [max.] | 88        | 61        |
| Drivers/ MCB10A type C [max.] | 54        | 37        |

Inrush current

I max

max/2

I nom.

T<sub>ref</sub>

Time (us)