

# PHILIPS

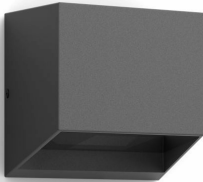
Alix Wall Lights  
4.3W

UltraEfficient

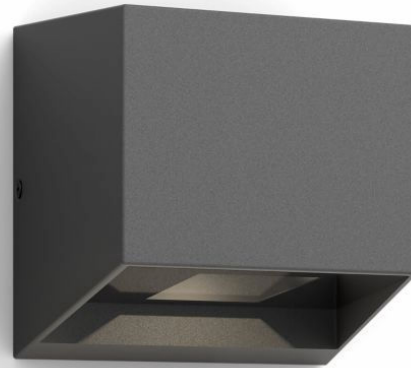
2700K

Antracite

Water Resistant



8720169351318



## Our most energy-efficient LED lights yet

Philips Alix Ultra Efficient outdoor lights use groundbreaking new technology to cut carbon emissions, reduce material waste, and lower energy usage. With an amazing lifetime of 50,000 hours, these lights last more than two times longer than Philips LED outdoor equivalents, and uses 50% less energy--just the thing for a more sustainable planet.

### Sustainable light solutions

- Long lifetime up to 50,000 hours
- Ultra Efficient

### Advanced LED light

- 5 year warranty on LED system

### Premium quality

- High quality aluminum and superior synthetics
- Durable design with PowerShield coating

### Designed for outdoors

- IP44 - weather proof

### Special characteristics

- Bi-directional light effect

8720169351318

**High quality light**

- Warm white light 2700K

# Highlights

## Long lifetime up to 50,000 hours



Reliable high-quality LED light lasts up to 50,000 hours. You can rest easy knowing that you won't have to worry about maintenance for years, while enjoying the perfect garden light every night.

## Ultra Efficient



Consumes at least 50% less energy as compared with equivalent standard LED lights from Philips.

## 5 year warranty on LED system



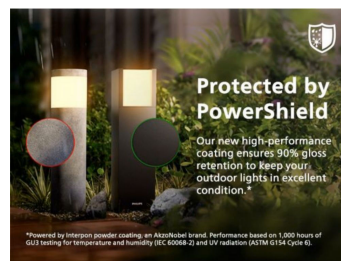
In addition to the standard 2-year warranty offered for this luminaire, Philips also offers a 5-year warranty on the LED system (the LED module and driver).

## High quality aluminum and superior synthetics



This Philips light is made specifically for outdoor spaces. It's hard-wearing and built to last, so it will light up your garden night after night. It's constructed from high quality die-cast aluminum and superior synthetics.

## Durable design



Protected by PowerShield To keep your outdoor lights in excellent condition, we use a high-performance powder coating powered by Interpon, an AkzoNobel brand. Tougher than traditional paints, it protects against fading, scratches, dents, and rust for long-lasting beauty and performance.

## IP44 - weather proof

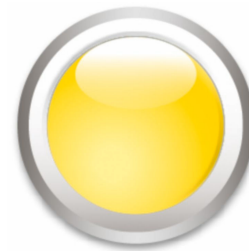


This Philips outdoor light is especially designed for humid outdoor environments and has been tested rigorously to ensure water resistance. Its IP44 rating means that it has been certified to offer ingress protection against dust and splashing water—perfect for general outdoor use.

## Bi-directional light effect

This Philips outdoor luminaire creates the perfect ambience in your garden or terrace with its Bi-directional light effect.

## Warm white light 2700K



Did you know that different shades of white light are identified by different color temperatures, measured in Kelvin (K)? Lower color temperatures produce a warm, cozy white light, while higher color temperatures produce a cool, more energizing white light. This luminaire produces warm, relaxing light at 2700 K.

# Specifications

## Design and finishing

- Color: Anthracite
- Material: Metal

## Durability

- Nominal lifetime: 50,000

## Environmental

- Disposal of the product: At the end of (economic) life, dispose the product according to local rules and do not dispose the product with regular household waste. The correct disposal of your product will help prevent potential negative consequences for the environment and human health.

## Extra feature/accessory incl.

- Adjustable spot head: Not adjustable
- Anti rust anti dust: Yes
- Bi-directional light beams: Yes
- Day-and-night sensor: No
- Fully weatherproof: Yes
- LED integrated: Yes
- Motion sensor: No
- Solar Energy: No
- Centerpiece: No

## Light characteristics

- Color rendering index (CRI): 80
- Color temperature: 2700 K

## Miscellaneous

- Especially designed for: Garden, Patio
- Style: Contemporary
- Type: Wall Lights
- EyeComfort: No
- LED Innovations: UltraEfficient
- Extra Features: Water Resistant

## Power consumption

- Power: 4.3

## Product dimensions and weight

- Net weight: 0.63 kg
- Overall height: 100 mm
- Overall length: 100 mm
- Overall width: 100 mm

## Service

- Warranty: 5 year(s)

## Technical specifications

- Total lumen output fixture: 800
- Bulb technology: LED
- Light color: Warm white light
- Mains power: AC 220-240
- Fixture dimmable: No
- Energy class included light source: B
- IP code: IP44 | Wire-protected and splash-proof
- Class of protection: Class I - Earthed
- Light source replaceable: No

## The bulb

- Software upgradable: No

## What's supported

- Compatible with Effects: No
- Defined support period: Not applicable
- Compatible operating systems: Not applicable
- Communication protocol: Not applicable
- Compatibility with 3rd party systems: Not applicable

## Packaging dimensions and weight

- EAN/UPC - product: 8720169351318
- Net weight: 0.63 kg
- Gross weight: 0.67 kg
- Height: 12.3 cm
- Length: 11.6 cm
- Width: 11.6 cm



Issue date: 2026-04-15  
Version: 0.307

© 2026 Signify Holding. All rights reserved. Signify does not give any representation or warranty as to the accuracy or completeness of the information included herein and shall not be liable for any action in reliance thereon. The information presented in this document is not intended as any commercial offer and does not form part of any quotation or contract, unless otherwise agreed by Signify. Philips and the Philips Shield Emblem are registered trademarks of Koninklijke Philips N.V.

[www.lighting.philips.com](http://www.lighting.philips.com)