

**PHILIPS**

LuxSpace downlight

Office lighting

# LuxSpace downlight

Iconic style meets superior  
sustainable performance



a lighting brand by ignify

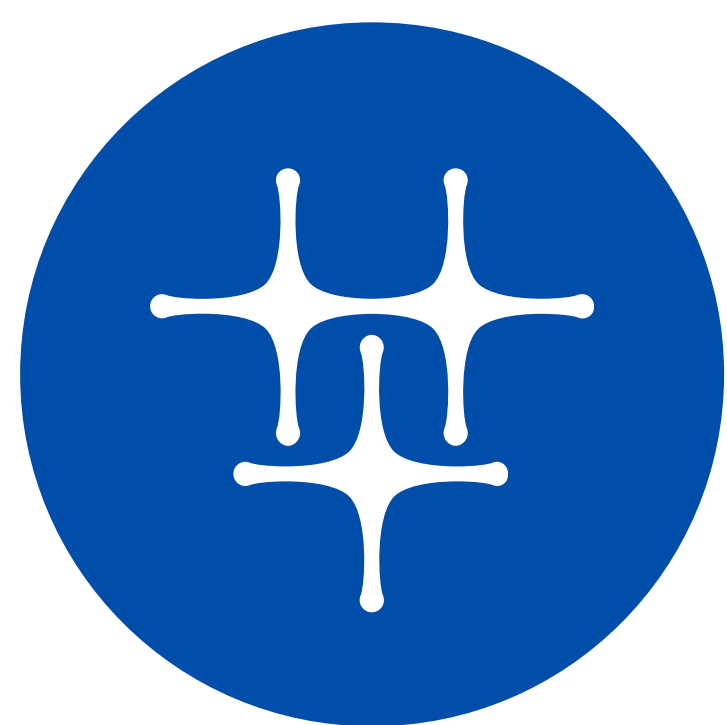


\*This icon has been developed by Signify and is used as a self-certification for the Philips UltraEfficient luminaires meeting the standards of tier 3 in IEA 4E SSL ANNEX.



# Redefining brilliance: The next generation of Philips LuxSpace downlights

Introducing the upgraded version of a proven favorite—the new LuxSpace downlight takes performance to the next level



**Style meets functionality**

Sleek design that's perfect for modern interiors, and wide choice of optics



**Reduce energy costs**

UltraEfficient versions available: 24% more efficient than the previous generation of this product family\*



**Meet sustainability goals**

Designed for a second lifetime with easy servicing and upgrade options

> Main product benefits	3
> Design highlights	4
> Excellent light quality	6
> Lighting for circularity	7

> Connectivity: Interact	9
> Product configurator	11
> Product specifications	12

\*Comparing Philips LuxSpace DN610B 20S/840UE PSU-E C to Philips LuxSpace DN571B LED20S/840 PSU-E C





# The new LuxSpace downlight at a glance

Get all product details and documents in the [Philips e-cat](#)

## High-end, flexible design

- Thin rim and choice of optics
- New reflectors: faded lines and black
- Easily integrates into any ceiling architecture and design concept
- Rimless design option and retrofit adaptor rings (for 225- and 240-mm cut-outs)



## Ultra-efficient and durable

- Optimized light distribution for increased efficacy
- Best-in-class efficacy: up to 185 lm/W\* with UltraEfficient configuration
- Lifetime: 50,000 hours (L90)

## Different product types with a consistent design for a unified look across various applications:

- Compact (DN610B)
- Surface-mounted (DN610C, available in Q3 2025)
- Pendant (DN610P, available in Q3 2025)

## High-quality, comfortable lighting

- Excellent light uniformity
- Large light emitting surface reduces perceived glare
- Office-compliant (UGR19 and L65<3000cd/m²)

**Optional front covers** enhance the look and enable higher protection (IP54):

- Protection glass (PG)
- Protection glass opal (PGO)



## Circularity hero

- Meets lighting for circularity criteria
- Signify Service tag enables easy service and upgrades, allowing a second life for the luminaire
- Selected components can be fully recycled

[Learn more about Signify Service tag](#)

[Read more about lighting for circularity](#)

Environmental product declaration (EPD) available for the complete family, learn more with [this link](#)

## Interact Ready connectivity for smart lighting

[Read more](#)

**TunableWhite versions** enable human-centric light recipes and scene setting to support occupants' well-being

[Read more](#)

## Integrated emergency lighting options

3 hours battery included with Pro (self-test) and DALI versions

\*Highest median value among the UltraEfficient product configurations



# Versatile design

With its sleek, minimalist design and customizable combinations of housing, optics, and rim colors, LuxSpace adapts effortlessly to any design concept. Whether blending seamlessly into the ceiling or making a bold design statement, it offers unparalleled versatility and style.



## Subtle rim and profile

- For seamless integration and stylish look
- Available in white, gray and black

## Smooth look

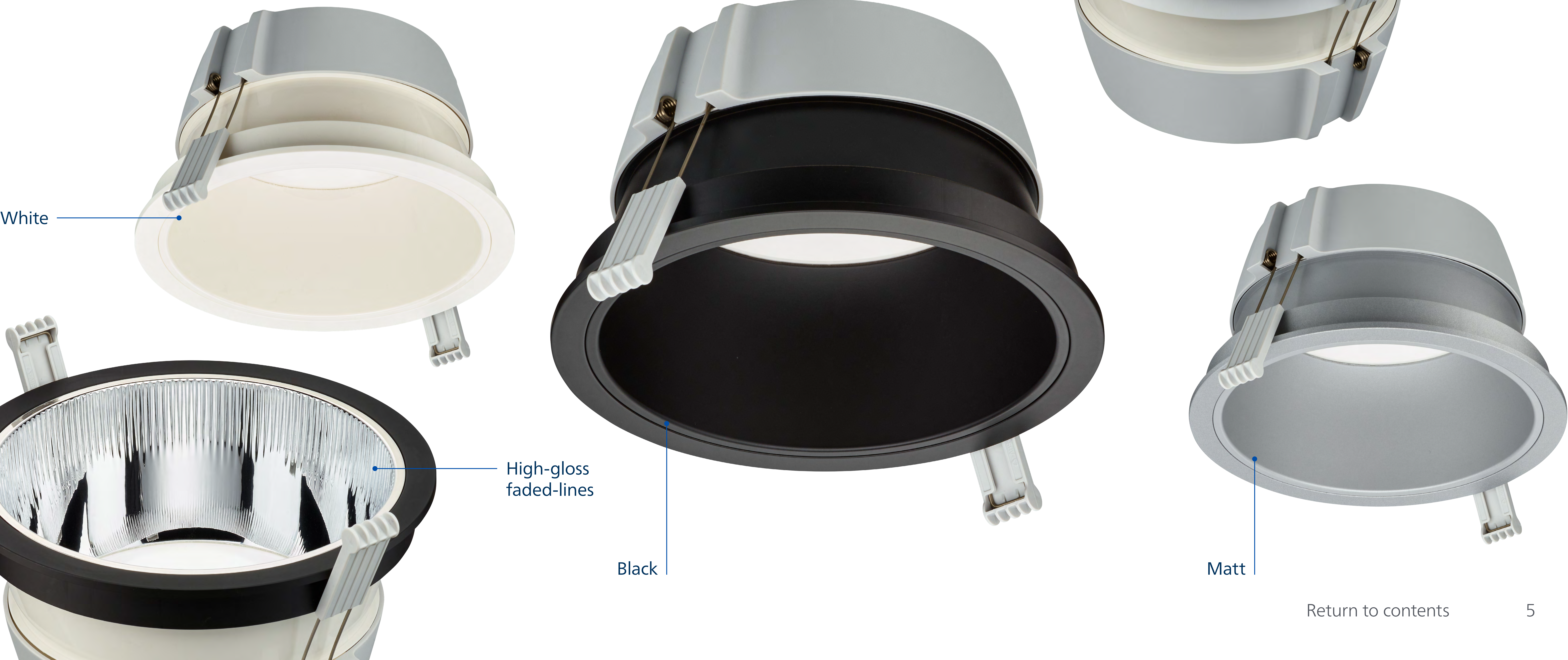
- Sleek design without any heat sink or fins
- Inner rim contributes to high-end aesthetic





# Reflect your style

Our choice of reflectors lets any interior design shine. From high-gloss to matt, and from classic white to our newest addition, black, these optics showcase the perfect blend of style and light quality.





# Transforming spaces with exceptional light quality



- Large light emitting surface creates soft, natural light with reduced perceived glare for unmatched visual comfort
- Office-compliant with UGR19 and L65 <3000cd/m<sup>2</sup>
- High level of color rendering with CRI90 option (Choose 930/940 in the product configurator)
- Different lumen packages, including high-lumen version (6,000 lm) for application in high ceiling areas, such as atriums of office buildings or airports



# Designed for a circular economy

In 2024, we used 1.7 times the resources our planet can sustain. To transition to a sustainable and circular economy, we need to rethink the way we produce and consume. There's no plan B for our home planet.

By choosing our lighting for circularity solutions, you get flexibility in lighting configurations and settings while reducing your carbon footprint to help you reach your sustainability development goals.

## Go for optimal sustainability by selecting your renovation path

### Are you looking to update your non-LED lighting?

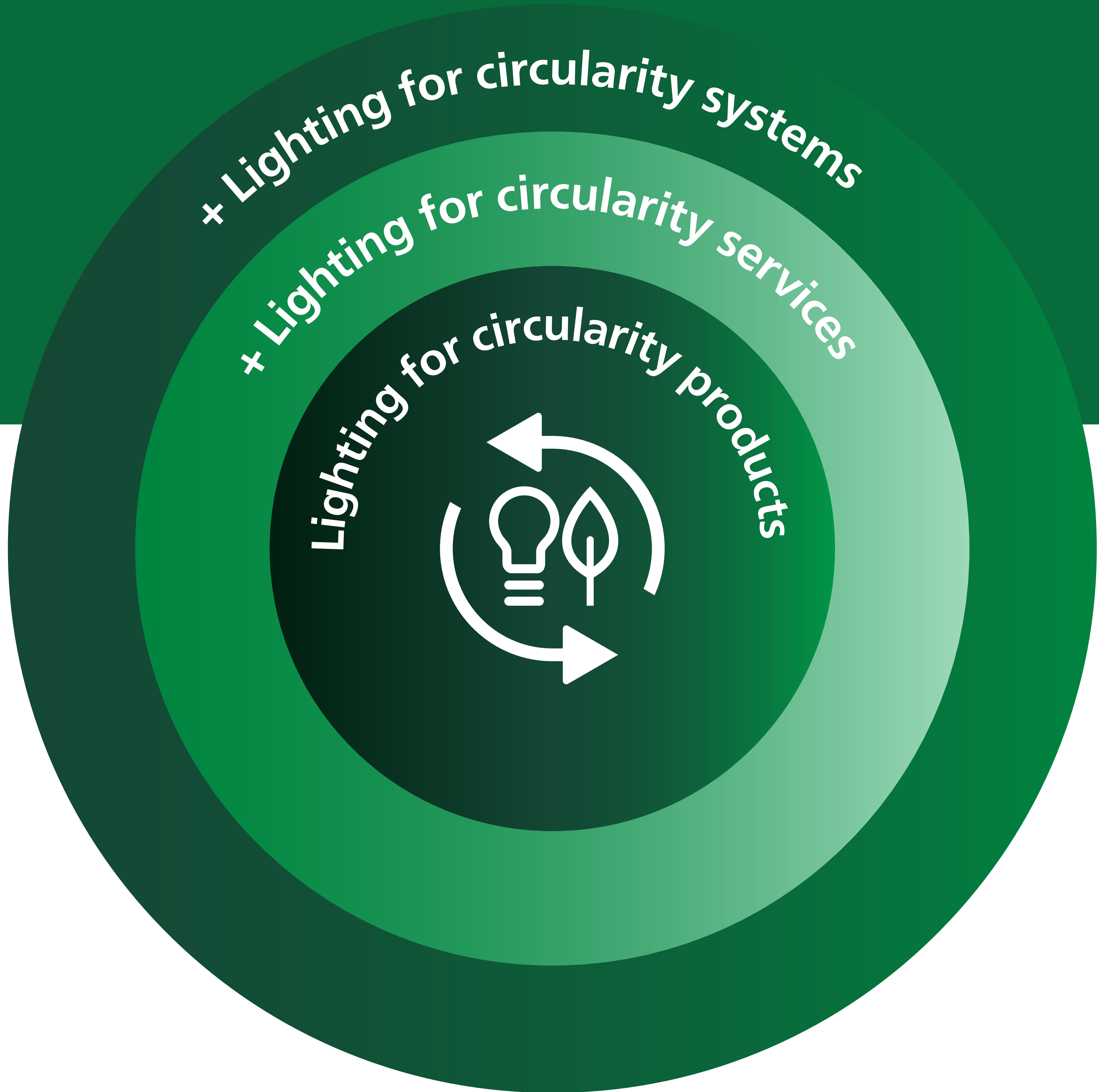
- Choose our lighting for circularity **products**
- Full portfolio of circular economy ready Philips LED luminaires
- Superior efficacy
- Products are recyclable, connectable and serviceable.

### Are you planning to update your LED-based infrastructure?

- Discover our remanufacturing or refurbishment **services**
- Gain enhanced luminaire performance, extended lifetimes, and end of contract management

### Do you want to unlock the potential of smart lighting?

- Update your infrastructure to smart lighting with our **systems** solutions
- Optimize your energy costs with insights into your energy usage
- Configure lighting behavior
- Remotely monitor your lighting system





# Philips LuxSpace downlight meets the five criteria of lighting for circularity

## 1. Energy efficiency and extended lifetime

- Best-in-class efficacy: up to 185 lm/W with UltraEfficient configuration\*
- Long lifetime of 50,000 hours (L90) reduces the need to replace luminaires or components

## 2. Connectable

- Serviceable drivers can connect LuxSpace to smart lighting systems, both wired (e.g. DALI) and wireless (e.g. Interact)  
**i** Choose Interact Ready product versions (DIA or WIA)
- Optional external sensors enable additional features such as daylight and occupancy sensing

## 3. Upgradeable

- The LED board can be easily replaced
- Upgrade bundles enable connectivity or energy efficiency upgrades



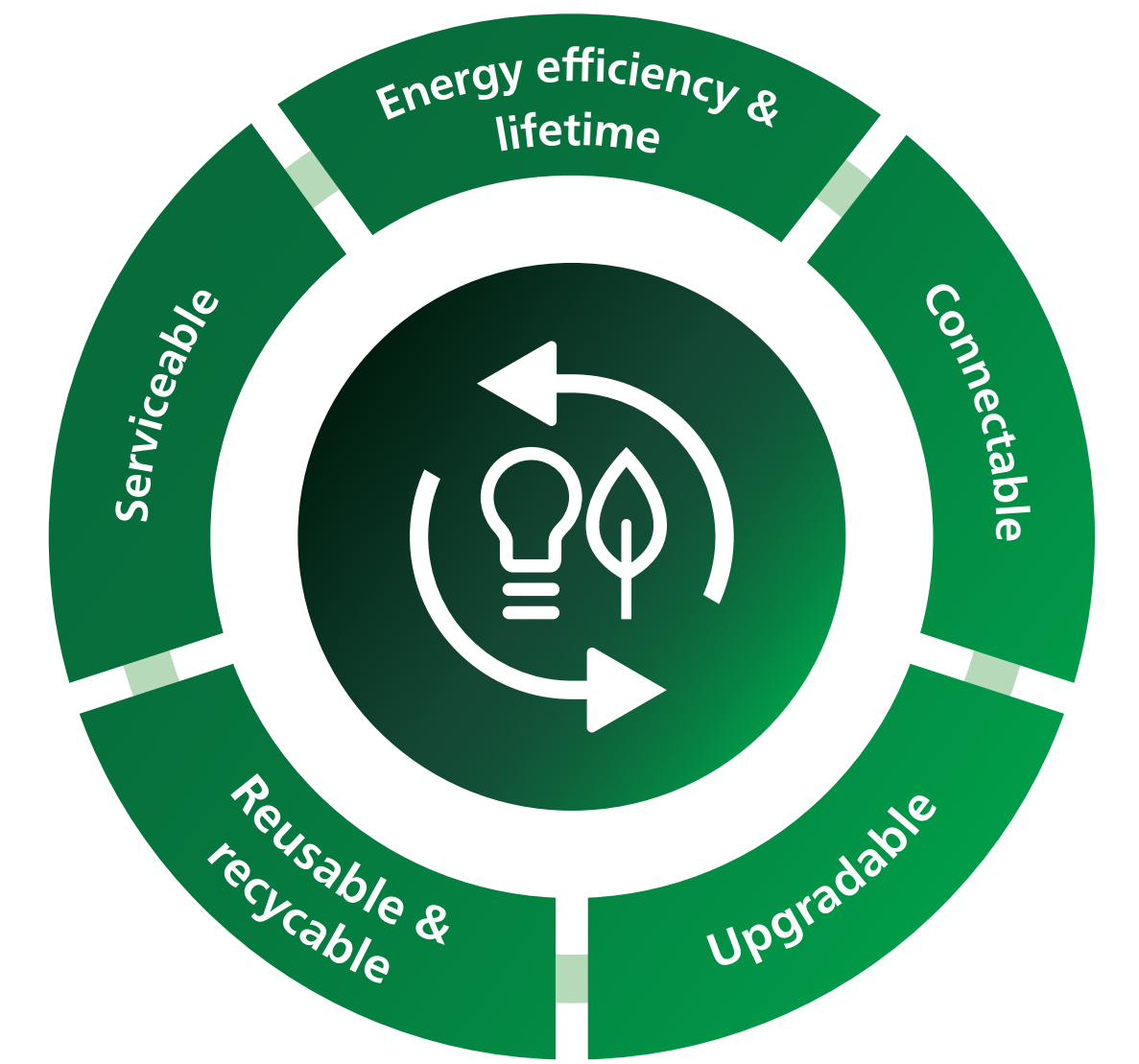
## 4. Reusable and recyclable

Replacing luminaire parts can significantly extend the service life of a LuxSpace installation. The luminaire can also be easily dismantled and broken down into separate parts of the same (pure) material. Those materials can then be recycled, contributing to an overall reduced carbon footprint.

## 5. Serviceable

- Signify Service tag QR-based identification system for easy identification of spare parts and upgrade bundles
- The luminaire is fully serviceable without the need for special tools. These components can easily be replaced:

- 1 Driver
- 2 LED board
- 3 Reflector
- 4 Cover
- 5 Rim



\*Highest median value among the UltraEfficient product configurations

**Environmental products declarations (EPD)** are available for the whole LuxSpace downlight family, download them [here](#).





Interact is part of our  
lighting for circularity offer

# Interact for smart lighting in office applications

With Interact, it's easier than ever to realize the benefits of smart lighting:  
higher energy savings, improved space utilization, greater well-being and  
employee productivity — and a big step towards achieving sustainability goals.

**General benefits**

- Ideal for refurbishments and new buildings
- No additional (DALI) control wires needed
- Perfect for projects of any size
- Quick to install and ready to use in a few clicks

**Sustainable**

- Sensor-enabled motion and daylight harvesting for instant energy cost savings

**Smart**

- Benefit from remote control and monitoring and reporting capabilities
- Use data to make better informed decisions more quickly

**Efficient**

- Collect actionable space analysis data to optimize building systems
- Get informed about issues to allow for timely and cost-efficient maintenance

**i** Select WIA (Wireless) or DIA (DALI dimmable, Interact Ready) in the product configurator

[> Learn more about Interact](#)

This is all you need for your smart lighting system

LuxSpace downlight  
equipped with WIA driver

interact  
ready.



Software applications



## Tunable White: Lighting for well-being

Tunable White is part of our human-centric lighting that supports the circadian rhythm and can be personalized for employee comfort and satisfaction.

- Easily change LED intensities and correlated color temperature (CCT) from warm white to cool white
- Trigger changes via scene switch buttons or apps or, or set them to happen automatically, mimicking natural daylight patterns

[Learn more >](#)



[Return to contents](#)



# Signify Service tag

Service tag from Signify is a unique QR code-based LED luminaire asset identification system that provides detailed information on specification and spare parts. The system simplifies the installation and maintenance of lighting infrastructure by utilizing cloud technology. Service tag also plays a key role in the circular design of our lighting solutions, as it extends their service life and reduces maintenance efforts, ensuring efficient servicing and avoiding waste.

## How it works

Every LuxSpace downlight is equipped with a unique QR code. All relevant asset data is stored in the service cloud, including:

- Detailed luminaire specification
- User data (geo-location, external ID, notes, etc.)
- Information on spare parts and accessories

By scanning the QR code on the packaging or luminaire with the Signify Service tag app, this information becomes instantly accessible, offering invaluable benefits.



### Easy installation and commissioning

Access to product details, manuals and spare parts  
Helps avoid errors



### Simplified maintenance

Detailed information on products  
Quick access to relevant information means less time required for repairs or replacements



### Asset management

Real-time tracking of assets  
Simplified management of replacements, upgrades and warranty information

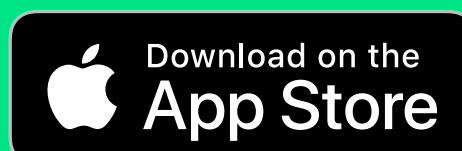


### Digital workflows

Simplified component replacement, error diagnostics, service requests, configuration changes, and more



Download the Service tag app for free!



Learn more on  
[signify.com/global/service-tag](https://signify.com/global/service-tag)



# Product configurator

### Family description

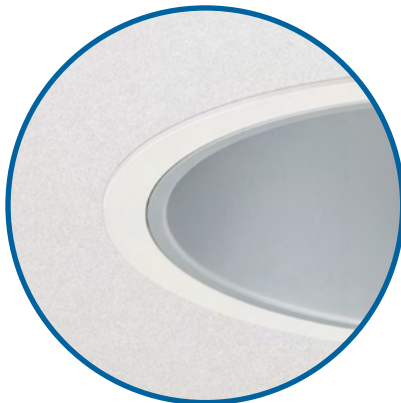
**DN610B:** Compact recessed

**Coming soon (Q3 2025):**

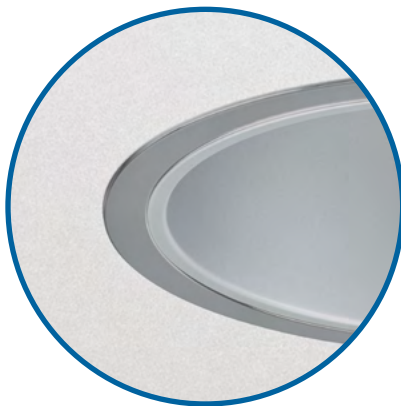
**DN610C:** Compact surface-mounted

**DN610P:** Compact pendant mounted

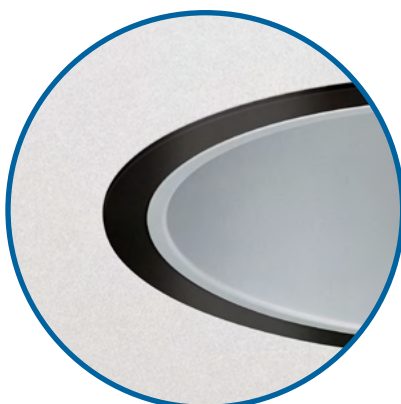
### Rim color



**WH:** White  
(RAL9003)



**SI:** Silver/Grey  
(RAL9006)



**BL:** Black  
(RAL9004)

### Optics/reflector



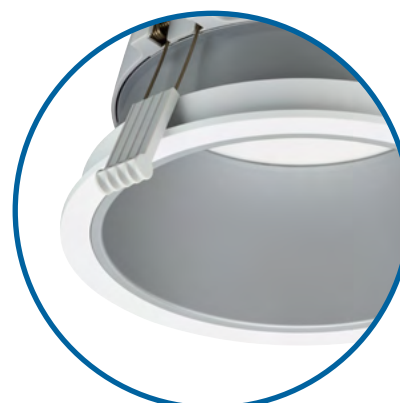
**C:** High-gloss



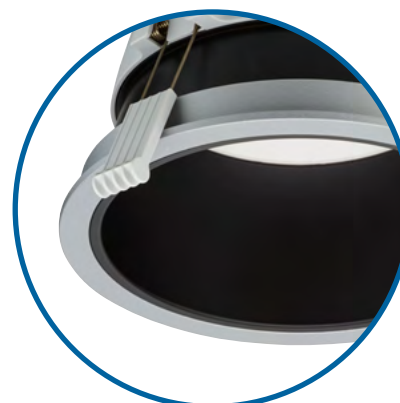
**FLR:** Faded-lines



**WR:** White

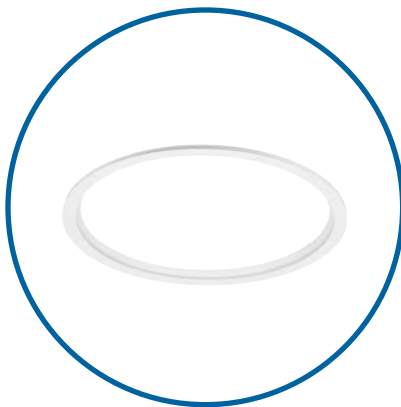


**M:** Matt

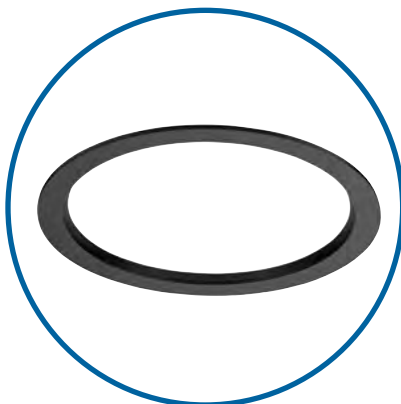


**BKR:** Black

### Retrofit adaptor rings



**RAD225:**  
for 225mm cut-out  
(in WH, SI, BL)



**RAD240:**  
for 240mm cut-out  
(in WH, SI, BL)

### Lumen packages

**20S:** 2,000 lm

**24S:** 2,400 lm

**40S:** 4,000 lm

**60S:** 6,000 lm

### Color temperature

**830:** 3000K CRI>80

**840:** 4000K CRI>80

**930:** 3000K CRI>90

**940:** 4000K CRI>90

**TWH:** Tunable White,  
2700K-6000K CRI>90

### Driver

**PSU:** On/off, no controls

**PSD:** DALI dimming

**PSED:** DALI dimming supporting  
central emergency

**DIA:** DALI dimming Interact Ready

**DIA-VLC:** DALI dimming, visual light  
communication enabled

**WIA:** Wireless

### Optional features

**ELP:** Emergency lighting PRO with  
3hrs battery pack

**ELD:** Emergency lighting DALI with  
3hrs battery pack

**RML:** Rimless version

**PG:** Protection glass

**PGO:** Protection glass opal



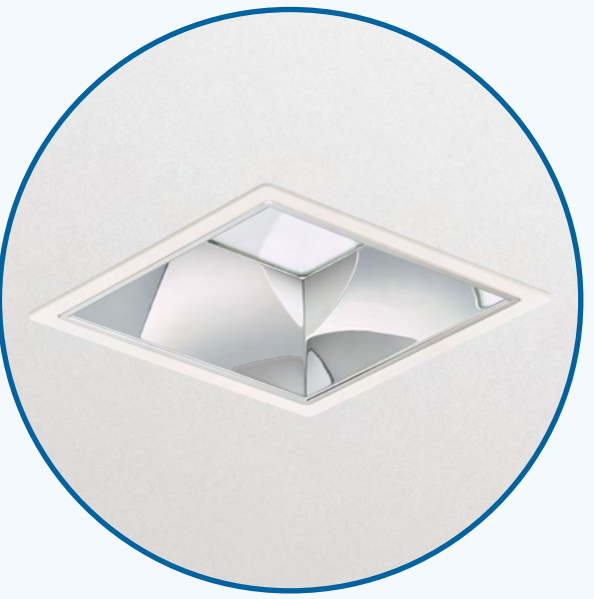
## Family overview



**DN560B**  
Mini low height recessed



**DN561B**  
Mini deep recessed



**DN572B**  
Square recessed



**Coming in  
Q3 2025** **DN610C**  
Surface-mounted



**Coming in  
Q3 2025** **DN610P**  
Pendant

Get all product details in the [Philips e-catalog](#) or  
configure your own variant with our [online configurator](#)

Tip: With the configuration components listed above  
you can easily decipher every product code, for example:  
[DN610B](#) [20S/840](#) [PSU-E](#) [C](#) [PGO](#) [WH](#)

[Return to contents](#)



# Specifications

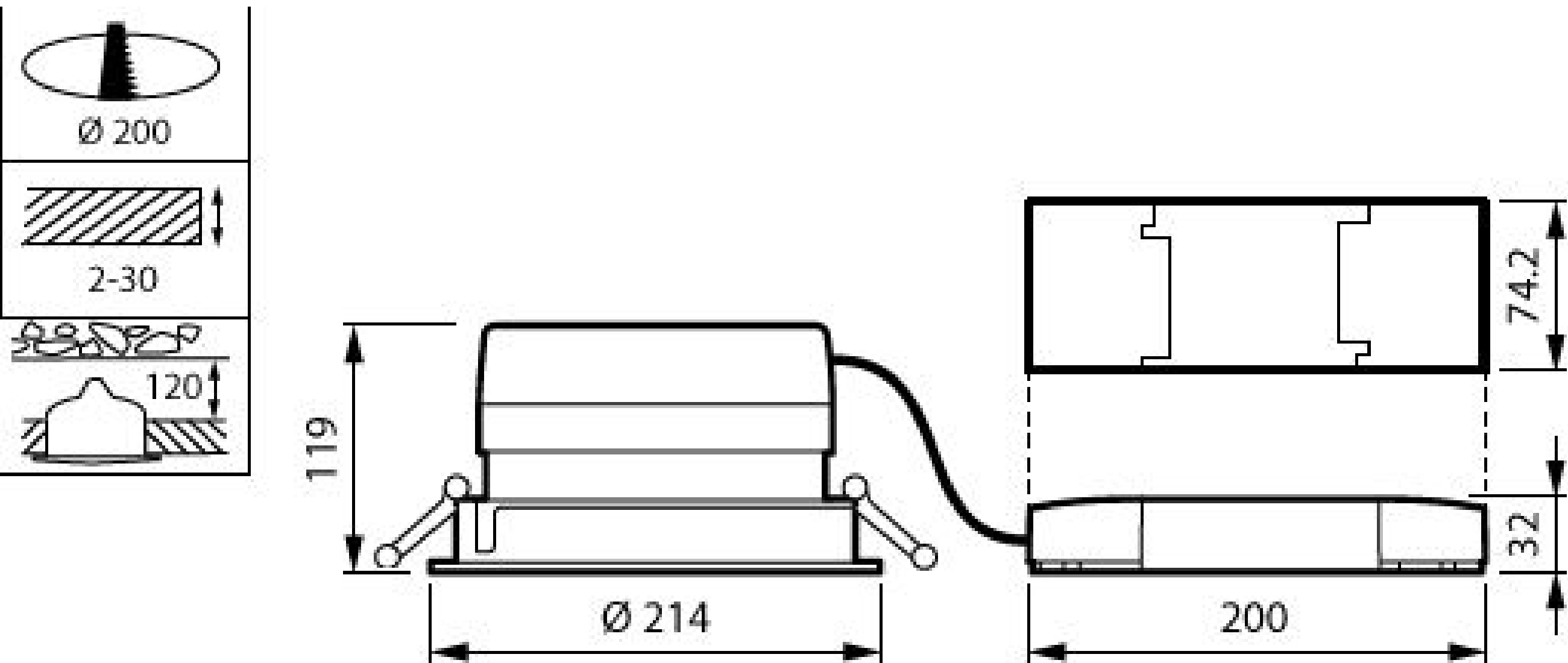
Get all product details and documents in the [Philips e-cat](#)

Luminous flux (lm)	2000 / 2400 / 4000 / 6000
Efficiency (lm/W)	121-185*
Correlated color temperature (K)	3000 / 4000
Color rendering index	>80 / >90
Lifetime	50,000 hours at L90
Optics	High-gloss / Faded-lines / White / Matt / Black
UGR	UGR19 (2,000 lm, 2,400 lm) / UGR22 (4,000 lm, 6,000 lm)
Ingress protection	IP20
Impact resistance	IK03
Safety class	Class II
Ambient temperature	+25°C to +35°C
Mounting	Recessed
System ready	Interact Ready
Driver	PSU / PSD / PSED / DIA / DIA-VLC / WIA
Dimmable	Yes, with DALI (PSD, PSED, DIA, DIA-VLC) and wireless (WIA) product versions
Emergency lighting	ELP3 self test / ELD3 DALI
Special options	IP54 (PG and PGO) / Adaptor rings for 225 mm and 240 mm cut-out sizes / Rimless version

\*With high-gloss (C) and faded-lines (FLR) optics

## Product dimensions

DN610B





# You and Signify – a reliable partnership

Signify, previously known as Philips Lighting, is the world leader in connected LED lighting systems, software and services. We proudly market the best lighting brands in the world, including Philips and Interact.

Close cooperation before, during and after projects is important to us. Our local service teams make sure you always get the competent support and information you need. You can rely on us for flexible, on-time delivery and product availability.

To help you stay on top of your game the [Signify Lighting Academy](#) offers a comprehensive range of educational resources for you to grow your expertise and get certified.

## Our global brands

### PHILIPS

The Philips brand stands for quality and energy-efficiency in light. For over 125 years, Philips products have been at the forefront of innovation.

Today Philips is recognized as the leading brand in lighting.

### interact

Interact is the brand of our IoT software and platform that manages smart lighting systems and the data that those systems collect.

Easy to install and set up, Interact software can be used in a wide range of application areas, from small offices to entire cities.

Get more info on our products, services and tools:

The Signify logo, featuring a stylized '@' symbol followed by the word 'signify' in a lowercase, sans-serif font.

## Driven by responsible innovation

Signify and Mercedes-AMG PETRONAS F1 Team are driven by a shared passion for technology and the desire to push the boundaries of what is possible.

Our innovations in lighting support the team's ambition to become one of the world's most sustainable in sport, serve the well-being and performance of the team, and deliver powerful experiences for fans, trackside and at home.

[Learn more at](#)

Signify is Official Lighting Partner of  
Mercedes-AMG PETRONAS F1 Team

The Signify logo, featuring a stylized '@' symbol followed by the word 'signify' in a lowercase, sans-serif font.



[Return to contents](#)

13





© 2025 Signify Holding. All rights reserved. The information provided herein is subject to change, without notice. Signify does not give any representation or warranty as to the accuracy or completeness of the information included herein and shall not be liable for any action in reliance thereon. The information presented in this document is not intended as any commercial offer and does not form part of any quotation or contract, unless otherwise agreed by Signify.

Philips and the Philips Shield Emblem are registered trademarks of Koninklijke Philips N.V. All other trademarks are owned by Signify Holding or their respective owners.

All technical information can be found at [www.philips.com](http://www.philips.com)