



Lumec RoadScape LED Architectural Roadway luminaires feature high performance optical technology that provides a high efficient lighting solution. Connectable ready, the RoadScape offers multiple lumen packages and a complete array of optical distributions ensuring the right fit for any type of application. This family also includes Service Tag, which enables data delivery and information sharing, as well as providing assistance throughout the life of the product.

Project: _____
 Location: _____
 Cat.No: _____
 Type: _____
 Qty: _____
 Notes: _____

Ordering guide

example: S-RSCF-135W60LED-740-G1-2F-UNV-DMG-HSS-PH8-TLRD7-GY3

Series	LED module	CCT/CRI	Gen. G1	Distribution	Voltage	Options		Finish			
						Controls ¹²	Options				
S-RSCF RoadScape w/flat roof	35W20LED ¹	740 4000K/70CRI	G1 Gen 1	Without Flat Lens	UNV 120-277V HVU 347-480V HVX ¹¹ 277-480V	ZD4i ^{7,13} Zhaga-D4i certified D4id D4i certified DALI driver DMG ¹⁴ 0-10V	API Factory installed NEMA label, ANSI C136.15-2020 compliant CSS ^{15,16} Cul-de-Sac Shield FSS ^{15,16} Front Side Shield HSS ^{15,16} House Side Shield LSS ^{15,16} Left Side Shield RSS ^{15,16} Right Side Shield FAWS ^{3,15} Field adjustable wattage switch OMS ¹⁷ Outdoor Multi-Sensor PH8 ^{2,18} Twist-lock photoelectric cell, UNV (120-277VAC)	BK Black BR Bronze GY3 Gray WH White			
	60W20LED ¹	730 3000K/70CRI		1 ¹⁰ Type I					PH8/347 ^{18,19} Twist-lock photoelectric cell (347VAC) PH8/480 ^{18,19} Twist-lock photoelectric cell (480VAC) PHXL ^{2,18} UNV (120-277VAC) PH9 ¹⁸ Shorting cap TLRD7 ²⁰ Tool less receptacle for twist-lock photocell or shorting cap, 7-pin (standard)	BKT Black BRT Bronze GY3 Gray WHT White	
	15W40LED ^{2,3,4}	727 ⁹ 2700K/70CRI		2 Type II							SP2 20kV / 10kA Surge protector SP1X Fail-Off 10kV/5kA Surge protector SP2X Fail-Off 20kV/10kA Surge protector TLRSR ^{7,13,21} SR receptacle BAC ²⁴ Meets the requirements of the Buy American Act of 1933 (BAA)
	20W40LED ^{2,3,4}	722 ⁹ 2200K/70CRI		2B Type II enhanced backlight							
	30W40LED ^{2,4}	840 ⁹ 4000K/80CRI		3 Type III							
	35W40LED ^{2,4}	830 ⁹ 3000K/80CRI		3W Type III wide							
	45W40LED ^{4,22}	827 ⁹ 2700K/80CRI		4 Type IV							
	65W40LED ^{4,22}			5 Type V							
	80W40LED			With Flat Lens							
	90W40LED ⁴			1F ¹⁰ Type I							
	105W40LED			2F Type II							
	120W40LED ⁵			2BF Type II enhanced backlight							
	140W40LED ^{4,5,6,7}			3F Type III							
	135W60LED ^{5,23}			3WF Type III wide							
	160W60LED ^{5,23}			4F Type IV							
180W60LED ^{5,23}		5F Type V									
210W70LED ^{4,6,7,23}											
225W70LED ^{4,6,7,8,23}											

- Only available with Type 1 Distribution, not available with HVX.
- Not available with HVU or HVX Voltage options.
- Only available with DMG Driver option.
- Not available with Type 1 Distribution.
- Not available with Shielding and Flat Lens together.
- Shielding cannot be used.
- Not available with Flat lens
- Not available with Dome Roof
- Extended lead-time may apply, Consult factory.
- Only available with selected wattages, see notes 4 and 5.
- Not available with DMG Driver option. If used, photoelectric cell selection must be compatible with fixture install voltage.
- Select one mandatory option.
- TLRSR must be selected with ZD4i Driver option.
- Please note this integrated feature come standard with RoadScape.
- Refer to Accessories section to confirm compatibility of shields with optical distribution.
- One shield provided per LED light engine.
- TLRSR Option and ZD4i Driver option must be selected with OMS.
- TLRD7 must be selected for this option.
- Not available with UNV Voltage option.
- Use of photoelectric cell or shorting cap is required to ensure proper illumination
- Only available with ZD4i Driver options.
- Not available with HVX voltage option.
- Not available with 2B, 3W, 2BF, 3WF distributions.
- Failure to properly select the "BAC" suffix could result in you receiving product that is not BAA compliant product with no recourse for an RMA or refund. This BAC designation hereunder does not address (i) the applicability of, or availability of a waiver under, the Trade Agreements Act, or (ii) the "Buy America" domestic content requirements imposed on states, localities, and other non-federal entities as a condition of receiving funds administered by the Department of Transportation or other federal agencies.



S-RSCF/S-RSCT RoadScape

LED Architectural Roadway

Accessories* Must be ordered as separate line items – quickly and easily installed in the field.
Not available with flat glass option. Flat glass shield only available factory installed.

Description	Ordering Code	Shield vs Dist. Comp.					Ordering Code	Shield vs Distribution Compatibility					
	10 LED version**	1	R2M	R3M	4	5	40 LED versions**	2	2B	3	3W	4	5
Cul-de-sac shield	ACC-LG66V10LED-CSS	No	Yes	Yes	No	No	ACC-LG66V40LED-CSS	Yes	Yes	Yes	Yes	No	No
Front side shield	ACC-LG66V10LED-FSS	No	Yes	Yes	No	No	ACC-LG66V40LED-FSS	Yes	Yes	Yes	Yes	No	No
Front side shield (for Type 4 only)	–	No	–	–	–	–	ACC-LG66V40LED-FSS-4	No	No	No	No	Yes	No
House side shield	ACC-LG66V10LED-HSS	No	Yes	Yes	Yes	No	ACC-LG66V40LED-HSS	Yes	Yes	Yes	Yes	No	No
House side shield (for Type 4 only)	ACC-LG66V10LED-HSS-4	No	No	No	No	No	ACC-LG66V40LED-HSS-4	No	No	No	No	Yes	No
Left side shield	ACC-LG66V10LED-LSS	No	Yes	Yes	No	No	ACC-LG66V40LED-LSS	Yes	Yes	Yes	Yes	No	No
Right side shield	ACC-LG66V10LED-RSS	No	Yes	Yes	N/A	N/A	ACC-LG66V40LED-RSS	Yes	Yes	Yes	Yes	No	No

* Consult Signify to confirm whether specific accessories are BAA-compliant.

** Refer to Wattage table to confirm light engine configuration. Example, if configuration is 2x10LED, 2 of the desired shields must be ordered per luminaire.

Predicted Lumen Depreciation Data

Derived from LED manufacturer's data and engineering design estimates, based on IESNA LM-80 methodology. Actual experience may vary due to field application conditions. L70 is the predicted time when LED performance depreciates to 70% of initial lumen output. Calculated per IESNA TM21-21.

Ambient Temperature	L70 per TM-21	50,000hrs	75,000hrs	100,000hrs
25°C	>102,000 hrs	96.1%	94.2%	92.3%



Connected lighting

Interact City connector node provides the plug and play wireless communications technology to connect your street light to the Interact City lighting management system.

Accessory Ordering Code	Description
LLC	Interact City cellular technology connector node

Contact the factory for additional support when connected lighting or additional services are desired.

Wattage Values

Ordering Code	Total LEDs	Light Engine Config.	Avg. System Watts (W) ¹	Wattage Label ²
S-RSCx-35W20LED	20	2x10LED	35	30
S-RSCx-60W20LED	20	2x10LED	59	60
S-RSCx-15W40LED	40	1x40LED	14	10
S-RSCx-20W40LED	40	1x40LED	19	20
S-RSCx-30W40LED	40	1x40LED	27	30
S-RSCx-35W40LED	40	1x40LED	34	30
S-RSCx-45W40LED	40	1x40LED	44	40
S-RSCx-65W40LED	40	1x40LED	63	60
S-RSCx-80W40LED	40	1x40LED or 4x10LED4	79	80
S-RSCx-90W40LED	40	1x40LED	89	90
S-RSCx-105W40LED ³	40	1x40LED or 4x10LED4	103	100
S-RSCx-120W40LED ³	40	1x40LED or 4x10LED	118	120
S-RSCx-140W40LED ³	40	1x40LED	136	140
S-RSCx-135W60LED ³	60	6x10LED	129	130
S-RSCx-160W60LED ³	60	6x10LED	151	150
S-RSCx-180W60LED ³	60	6x10LED	171	170
S-RSCx-210W70LED ³	70	7x10LED	204	200
S-RSCx-225W70LED ³	70	7x10LED	224	220

- Typical values, rounded.
- As per ANSI C136.15-2020. Consult factory for other labelling needs.
- Rated for +40°C / +104°F (Type 1 distribution only).

FAWS

FAWS	15W40LED 35W40LED	20W40LED 45W40LED	30W40LED
	Typical System Wattage Multiplier	Typical System Wattage Multiplier	Typical Delivered Lumens Multiplier
1	0.229	0.229	0.221
2	0.398	0.398	0.394
3	0.467	0.467	0.464
4	0.528	0.528	0.528
5	0.598	0.598	0.597
6	0.643	0.643	0.643
7	0.695	0.695	0.697
8	0.729	0.729	0.731
9	0.766	0.766	0.769
10	1.000	1.000	1.000

Note: Typical value accuracy +/- 5%

FAWS	140W40LED 210W70LED 225W70LED	160W60LED with flat lens 180W60LED with flat lens
	Typical System Wattage Multiplier	Typical Delivered Lumens Multiplier
1	0.134	0.134
2	0.252	0.266
3	0.317	0.339
4	0.425	0.451
5	0.488	0.516
6	0.560	0.590
7	0.634	0.659
8	0.706	0.729
9	0.767	0.787
10	1.000	1.000

Note: Typical value accuracy +/- 5%

FAWS	35W20LED 80W40LED 120W40LED 160W60LED without flat lens 180W60LED without flat lens	60W20LED 90W40LED 135W60LED	65W40LED 105W40LED
	Typical System Wattage Multiplier	Typical System Wattage Multiplier	Typical Delivered Lumens Multiplier
1	0.273	0.273	0.286
2	0.487	0.487	0.515
3	0.574	0.574	0.605
4	0.695	0.695	0.725
5	0.741	0.741	0.771
6	0.812	0.812	0.803
7	0.878	0.878	0.834
8	0.924	0.924	0.933
9	0.980	0.980	0.982
10	1.000	1.000	1.000

Note: Typical value accuracy +/- 5%

S-RSCF/S-RSCT RoadScape

LED Architectural Roadway

Without Flat Lens: LED Standard Performance Lumen Values – multiply values by 0.9 for 80CRI

Ordering Code	Type 1F			Type 2F			Type 2BF			Type 3F			Type 3WF			Type 4F			Type 5F		
	Lumen Output	BUG Rating	Effic. (LPW)	Lumen Output	BUG Rating	Effic. (LPW)	Lumen Output	BUG Rating	Effic. (LPW)	Lumen Output	BUG Rating	Effic. (LPW)	Lumen Output	BUG Rating	Effic. (LPW)	Lumen Output	BUG Rating	Effic. (LPW)	Lumen Output	BUG Rating	Effic. (LPW)
4000K / 70CRI, multiply 4000K values by 0.827 for 2200K																					
35W20LED	6161	B2-U0-G2	177.0	-	-	-	-	-	-	-	-	-	-	-	-	-	-	-	-	-	-
60W20LED	9819	B3-U0-G3	167.3	-	-	-	-	-	-	-	-	-	-	-	-	-	-	-	-	-	-
15W40LED	-	-	-	2723	B1-U0-G1	189.9	2846	B1-U0-G1	198.5	2800	B1-U0-G1	195.3	2747	B1-U0-G1	191.5	2740	B1-U0-G1	191.0	2655	B2-U0-G1	185.1
20W40LED	-	-	-	3617	B1-U0-G1	189.1	3780	B1-U0-G1	197.6	3720	B1-U0-G1	194.4	3648	B1-U0-G1	190.7	3639	B1-U0-G1	190.2	3526	B2-U0-G1	184.3
30W40LED	-	-	-	4890	B2-U0-G2	182.7	5111	B1-U0-G1	191.0	5029	B1-U0-G1	187.9	4933	B1-U0-G1	184.3	4920	B1-U0-G1	183.8	4767	B3-U0-G2	178.2
35W40LED	-	-	-	6179	B2-U0-G2	181.1	6457	B2-U0-G2	189.3	6354	B2-U0-G1	186.3	6232	B2-U0-G2	182.7	6216	B1-U0-G2	182.2	6023	B3-U0-G2	176.6
45W40LED	-	-	-	7784	B2-U0-G2	178.3	8135	B2-U0-G2	186.3	8005	B2-U0-G2	183.3	7851	B2-U0-G2	179.8	7831	B1-U0-G2	179.4	7588	B3-U0-G2	173.8
65W40LED	-	-	-	10494	B3-U0-G3	166.0	10968	B2-U0-G2	173.5	10792	B2-U0-G2	170.8	10585	B2-U0-G2	167.5	10557	B2-U0-G2	167.0	10230	B4-U0-G3	161.9
80W40LED	14189	B3-U0-G3	179.6	12875	B3-U0-G3	163.0	13456	B3-U0-G3	170.3	13240	B3-U0-G2	167.6	12987	B3-U0-G3	164.4	12953	B2-U0-G2	164.0	12552	B4-U0-G3	158.9
90W40LED	-	-	-	14456	B3-U0-G3	162.4	15108	B3-U0-G3	169.8	14866	B3-U0-G3	167.0	14581	B3-U0-G3	163.8	14543	B2-U0-G2	163.4	14092	B4-U0-G3	158.3
105W40LED	17794	B3-U0-G3	176.2	16298	B3-U0-G3	158.2	17033	B3-U0-G3	165.4	16760	B3-U0-G3	162.7	16439	B3-U0-G3	159.6	16396	B2-U0-G3	159.2	15888	B4-U0-G3	154.3
120W40LED	19805	B4-U0-G4	172.2	18147	B3-U0-G3	153.8	18966	B3-U0-G3	160.7	18661	B3-U0-G3	158.1	18304	B3-U0-G3	155.1	18256	B2-U0-G3	154.7	17691	B4-U0-G3	149.9
140W40LED	-	-	-	20745	B3-U0-G3	152.5	21681	B3-U0-G3	159.4	21333	B3-U0-G3	156.9	20924	B3-U0-G3	153.9	20870	B3-U0-G3	153.5	20224	B5-U0-G4	148.7
135W60LED	22952	B4-U0-G4	177.9	22030	B3-U0-G3	170.8	-	-	-	22391	B3-U0-G3	173.6	-	-	-	22158	B3-U0-G4	171.8	21779	B5-U0-G3	168.8
160W60LED	26029	B4-U0-G4	172.4	24983	B3-U0-G3	165.5	-	-	-	25393	B3-U0-G3	168.2	-	-	-	25128	B3-U0-G4	166.4	24698	B5-U0-G3	163.6
180W60LED	28627	B4-U0-G4	167.4	27477	B4-U0-G4	160.7	-	-	-	27927	B3-U0-G3	163.3	-	-	-	27636	B3-U0-G4	161.6	27164	B5-U0-G4	158.9
210W70LED	-	-	-	31823	B4-U0-G4	156.0	-	-	-	32345	B4-U0-G3	158.6	-	-	-	32007	B3-U0-G4	156.9	31460	B5-U0-G4	154.2
225W70LED	-	-	-	34240	B4-U0-G4	152.9	-	-	-	34801	B4-U0-G4	155.4	-	-	-	34438	B3-U0-G5	153.7	33849	B5-U0-G4	151.1
3000K / 70CRI																					
35W20LED	5914	B2-U0-G2	169.9	-	-	-	-	-	-	-	-	-	-	-	-	-	-	-	-	-	-
60W20LED	9426	B3-U0-G3	160.6	-	-	-	-	-	-	-	-	-	-	-	-	-	-	-	-	-	-
15W40LED	-	-	-	2614	B1-U0-G1	182.3	2732	B1-U0-G1	190.5	2688	B1-U0-G1	187.5	2637	B1-U0-G1	183.9	2630	B1-U0-G1	183.4	2549	B2-U0-G1	177.7
20W40LED	-	-	-	3473	B1-U0-G1	181.5	3629	B1-U0-G1	189.7	3571	B1-U0-G1	186.7	3503	B1-U0-G1	183.1	3493	B1-U0-G1	182.6	3385	B2-U0-G1	177.0
30W40LED	-	-	-	4695	B1-U0-G1	175.4	4907	B1-U0-G1	183.4	4828	B1-U0-G1	180.4	4735	B1-U0-G1	177.0	4723	B1-U0-G1	176.5	4577	B3-U0-G2	171.0
35W40LED	-	-	-	5931	B2-U0-G2	173.9	6199	B2-U0-G2	181.7	6100	B2-U0-G1	178.8	5983	B1-U0-G1	175.4	5967	B1-U0-G2	174.9	5782	B3-U0-G2	169.5
45W40LED	-	-	-	7473	B2-U0-G2	171.2	7810	B2-U0-G2	178.9	7685	B2-U0-G2	176.0	7537	B2-U0-G2	172.6	7518	B1-U0-G2	172.2	7285	B3-U0-G2	166.9
65W40LED	-	-	-	10075	B3-U0-G3	159.4	10529	B2-U0-G2	166.6	10360	B2-U0-G2	163.9	10161	B2-U0-G2	160.8	10135	B1-U0-G2	160.4	9821	B4-U0-G3	155.4
80W40LED	13621	B3-U0-G3	172.4	12360	B3-U0-G3	156.5	12918	B3-U0-G3	163.5	12711	B3-U0-G2	160.9	12467	B3-U0-G3	157.8	12435	B2-U0-G2	157.4	12050	B4-U0-G3	152.5
90W40LED	-	-	-	13878	B3-U0-G3	155.9	14504	B3-U0-G3	163.0	14271	B3-U0-G3	160.3	13997	B3-U0-G3	157.3	13961	B2-U0-G2	156.9	13529	B4-U0-G3	152.0
105W40LED	17082	B3-U0-G3	169.1	15646	B3-U0-G3	151.9	16352	B3-U0-G3	158.8	16090	B3-U0-G3	156.2	15781	B3-U0-G3	153.2	15740	B3-U0-G3	152.8	15253	B4-U0-G3	148.1
120W40LED	19013	B4-U0-G4	165.3	17421	B3-U0-G3	147.6	18207	B3-U0-G3	154.3	17915	B3-U0-G3	151.8	17571	B3-U0-G3	148.9	17526	B2-U0-G3	148.5	16983	B4-U0-G3	143.9
140W40LED	-	-	-	19915	B3-U0-G3	146.4	20814	B3-U0-G3	153.0	20480	B3-U0-G3	150.6	20087	B3-U0-G3	147.7	20035	B2-U0-G3	147.3	19415	B5-U0-G4	142.8
135W60LED	22034	B4-U0-G4	170.8	21149	B3-U0-G3	163.9	-	-	-	21496	B3-U0-G3	166.6	-	-	-	21272	B2-U0-G4	164.9	20908	B5-U0-G3	162.1
160W60LED	24988	B4-U0-G4	165.5	23984	B3-U0-G3	158.8	-	-	-	24377	B3-U0-G3	161.4	-	-	-	24123	B3-U0-G4	159.8	23710	B5-U0-G3	157.0
180W60LED	27482	B4-U0-G4	160.7	26378	B3-U0-G3	154.3	-	-	-	26810	B3-U0-G3	156.8	-	-	-	26531	B3-U0-G4	155.2	26077	B5-U0-G3	152.5
210W70LED	-	-	-	30550	B4-U0-G4	149.8	-	-	-	31051	B3-U0-G3	152.2	-	-	-	30727	B3-U0-G4	150.6	30202	B5-U0-G4	148.0
225W70LED	-	-	-	32871	B4-U0-G4	146.7	-	-	-	33409	B4-U0-G4	149.1	-	-	-	33061	B3-U0-G4	147.6	32495	B5-U0-G4	145.1
2700K / 70CRI																					
35W20LED	5421	B2-U0-G2	155.8	-	-	-	-	-	-	-	-	-	-	-	-	-	-	-	-	-	-
60W20LED	8641	B3-U0-G3	147.2	-	-	-	-	-	-	-	-	-	-	-	-	-	-	-	-	-	-
15W40LED	-	-	-	2396	B1-U0-G1	167.1	2505	B1-U0-G1	174.7	2464	B1-U0-G1	171.9	2417	B1-U0-G1	168.6	2411	B1-U0-G1	168.1	2336	B2-U0-G1	162.9
20W40LED	-	-	-	3183	B1-U0-G1	166.4	3327	B1-U0-G1	173.9	3273	B1-U0-G1	171.1	3211	B1-U0-G1	167.8	3202	B1-U0-G1	167.4	3103	B2-U0-G1	162.2
30W40LED	-	-	-	4304	B1-U0-G1	160.8	4498	B1-U0-G1	168.1	4426	B1-U0-G1	165.4	4341	B1-U0-G1	162.2	4329	B1-U0-G1	161.8	4195	B3-U0-G2	156.8
35W40LED	-	-	-	5437	B2-U0-G2	159.4	5682	B1-U0-G1	166.6	5591	B1-U0-G1	163.9	5484	B1-U0-G1	160.8	5470	B1-U0-G2	160.4	5300	B3-U0-G2	155.4
45W40LED	-	-	-	6850	B2-U0-G2	156.9	7159	B2-U0-G2	164.0	7044	B2-U0-G2	161.3	6909	B2-U0-G2	158.2	6891	B1-U0-G2	157.8	6678	B3-U0-G2	152.9
65W40LED	-	-	-	9235	B2-U0-G2	146.1	9652	B2-U0-G2	152.7	9497	B2-U0-G2	150.3	9315	B2-U0-G2	147.4	9290	B1-U0-G2	147.0	9003	B3-U0-G3	142.4
80W40LED	12486	B3-U0-G3	158.1	11330	B3-U0-G3	143.4	11841	B3-U0-G3	149.9	11652	B2-U0-G2	147.5	11428	B2-U0-G2	144.7	11398	B2-U0-G2	144.3	11045	B4-U0-G3	139.8
90W40LED	-	-	-	12721	B3-U0-G3	142.9	13295	B3-U0-G3	149.4	13082	B3-U0-G2	147.0	12831	B3-U0-G3	144.2	12798	B2-U0-G2	143.8	12401	B4-U0-G3	139.3
105W40LED	15659	B3-U0-G3	155.0	14342	B3-U0-G3	139.2	14989	B3-U0-G3	145.5	14749	B3-U0-G3	143.2	14466	B3-U0-G3	140.4	14428	B2-U0-G2	140.1	13982	B4-U0-G3	135.7
120W40LED	17428	B3-U0-G3	151.5	15969	B3-U0-G3	135.3	16690	B3-U0-G3	141.4	16422	B3-U0-G3	139.2	16107	B3-U0-G3	136.5	16065	B2-U0-G3	136.1	15568	B4-U0-G3	131.9
140W40LED	-	-	-	18256	B3-U0-G3	134.2	19079	B3-U0-G3	140.3	18773	B3-U0-G3	138.0	18413	B3-U0-G3	135.4	18365	B2-U0-G3	135.0	17797	B4-U0-G3	130.9
135W60LED	20198	B4-U0-G4	156.6	19387	B3-U0-G3	150.3	-	-	-	19704	B3-U0-G3	152.7	-	-	-	19499	B2-U0-G3	151.2	19166	B5-U0-G3	148.6
160W60LED	22905	B4-U0-G4	151.7	21985	B3-U0-G3	145.6	-	-	-	22345	B3-U0-G3	148.0	-	-	-	22113	B3-U0-G4	146.4	21734	B5-U0-G3	143.9
180W60LED	25192	B4-U0-G4	147.3	24180	B3-U0-G3	141.4	-	-	-	24576	B3-U0-G3	143.7	-	-	-	24320	B3-U0-G4	142.2	23904	B5-U0-G3	139.8
210W70LED	-	-	-	28004	B4-U0-G4	137.3	-	-	-	28463	B3-U0-G3	139.5	-	-	-	28167	B3-U0-G4	138.1	27685	B5-U0-G3	135.7
225W70LED	-	-	-	30131	B4-U0-G4	134.5	-	-	-	30625	B3-U0-G3	136.7	-	-	-	30306	B3-U0-G4	135.3	29788	B5-U0-G4	133.0

Actual performance may vary due to installation variables including optics, mounting/ceiling height, dirt depreciation, light loss factor, etc.; highly recommended to confirm performance with a layout - contact Applications at signify.com/outdoorluminaire. Consult DLC QPL to confirm your specific fixture selection is DLC approved. Note: Some data may be scaled based on tests of similar but not identical luminaires.

S-RSCF/S-RSCT RoadScape

LED Architectural Roadway

With Flat Lens: LED Standard Performance Lumen Values – multiply values by 0.9 for 80CRI

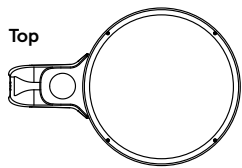
Ordering Code	Type 1F			Type 2F			Type 2BF			Type 3F			Type 3WF			Type 4F			Type 5F		
	Lumen Output	BUG Rating	Effic. (LPW)	Lumen Output	BUG Rating	Effic. (LPW)	Lumen Output	BUG Rating	Effic. (LPW)	Lumen Output	BUG Rating	Effic. (LPW)	Lumen Output	BUG Rating	Effic. (LPW)	Lumen Output	BUG Rating	Effic. (LPW)	Lumen Output	BUG Rating	Effic. (LPW)
4000K / 70CRI, multiply 4000K values by 0.827 for 2200K																					
35W20LED	5436	B2-U0-G2	156.2	-	-	-	-	-	-	-	-	-	-	-	-	-	-	-	-	-	-
60W20LED	8664	B3-U0-G2	147.6	-	-	-	-	-	-	-	-	-	-	-	-	-	-	-	-	-	-
15W40LED	-	-	-	2398	B1-U0-G1	167.2	2552	B1-U0-G1	178.0	2507	B1-U0-G1	174.8	2432	B1-U0-G1	169.6	2473	B1-U0-G1	172.5	2291	B2-U0-G1	159.8
20W40LED	-	-	-	3185	B1-U0-G1	166.5	3390	B1-U0-G1	177.2	3329	B1-U0-G1	174.0	3230	B1-U0-G1	168.8	3285	B1-U0-G1	171.7	3043	B2-U0-G1	159.1
30W40LED	-	-	-	4305	B1-U0-G1	160.9	4583	B1-U0-G1	171.3	4501	B1-U0-G1	168.2	4367	B1-U0-G1	163.2	4441	B1-U0-G1	166.0	4114	B3-U0-G1	153.7
35W40LED	-	-	-	5440	B2-U0-G1	159.5	5791	B2-U0-G1	169.8	5687	B2-U0-G1	166.7	5517	B1-U0-G1	161.7	5611	B1-U0-G1	164.5	5198	B3-U0-G1	152.4
45W40LED	-	-	-	6853	B2-U0-G2	157.0	7295	B2-U0-G2	167.1	7164	B2-U0-G1	164.1	6950	B2-U0-G2	159.2	7069	B1-U0-G2	161.9	6548	B3-U0-G1	150.0
65W40LED	-	-	-	9239	B2-U0-G2	146.2	9835	B2-U0-G2	155.6	9659	B2-U0-G2	152.8	9370	B2-U0-G2	148.3	9531	B2-U0-G2	150.8	8828	B3-U0-G2	139.7
80W40LED	12520	B3-U0-G3	158.5	11335	B2-U0-G2	143.5	12067	B2-U0-G2	152.7	11850	B3-U0-G2	150.0	11496	B2-U0-G2	145.5	11693	B2-U0-G2	148.0	10832	B4-U0-G2	137.1
90W40LED	-	-	-	12727	B3-U0-G3	143.0	13548	B3-U0-G3	152.2	13305	B3-U0-G2	149.5	12907	B2-U0-G2	145.0	13129	B2-U0-G2	147.5	12161	B4-U0-G2	136.6
105W40LED	15701	B3-U0-G3	155.5	14348	B3-U0-G3	139.3	15275	B3-U0-G3	148.3	15001	B3-U0-G2	145.6	14552	B3-U0-G3	141.3	14802	B2-U0-G2	143.7	13711	B4-U0-G2	133.1
120W40LED	17475	B3-U0-G3	152.0	15976	B3-U0-G3	135.4	17008	B3-U0-G3	144.1	16702	B3-U0-G3	141.5	16203	B3-U0-G3	137.3	16481	B2-U0-G2	139.7	15266	B4-U0-G2	129.4
140W40LED	-	-	-	18264	B3-U0-G3	134.3	19443	B3-U0-G3	143.0	19094	B3-U0-G3	140.4	18523	B3-U0-G3	136.2	18841	B3-U0-G3	138.5	17452	B4-U0-G2	128.3
135W60LED	20253	B4-U0-G3	157.0	19311	B3-U0-G3	149.7	-	-	-	19569	B3-U0-G3	151.7	-	-	-	19099	B3-U0-G3	148.1	18123	B4-U0-G2	140.5
160W60LED	22967	B4-U0-G4	152.1	21900	B3-U0-G3	145.0	-	-	-	22192	B3-U0-G3	147.0	-	-	-	21658	B3-U0-G3	143.4	20552	B5-U0-G3	136.1
180W60LED	25260	B4-U0-G4	147.7	24086	B3-U0-G3	140.9	-	-	-	24407	B3-U0-G3	142.7	-	-	-	23820	B3-U0-G3	139.3	22604	B5-U0-G3	132.2
3000K / 70CRI																					
35W20LED	5219	B2-U0-G2	150.0	-	-	-	-	-	-	-	-	-	-	-	-	-	-	-	-	-	-
60W20LED	8318	B3-U0-G2	141.7	-	-	-	-	-	-	-	-	-	-	-	-	-	-	-	-	-	-
15W40LED	-	-	-	2302	B1-U0-G1	160.5	2450	B1-U0-G1	170.9	2406	B1-U0-G1	167.8	2334	B1-U0-G1	162.8	2374	B1-U0-G1	165.6	2199	B2-U0-G1	153.4
20W40LED	-	-	-	3057	B1-U0-G1	159.8	3255	B1-U0-G1	170.1	3196	B1-U0-G1	167.1	3101	B1-U0-G1	162.1	3154	B1-U0-G1	164.9	2921	B2-U0-G1	152.7
30W40LED	-	-	-	4133	B1-U0-G1	154.5	4400	B1-U0-G1	164.4	4321	B1-U0-G1	161.5	4192	B1-U0-G1	156.6	4264	B1-U0-G1	159.3	3950	B2-U0-G1	147.6
35W40LED	-	-	-	5222	B1-U0-G1	153.1	5559	B2-U0-G1	163.0	5459	B2-U0-G1	160.5	5296	B1-U0-G1	155.3	5387	B1-U0-G1	157.9	4990	B3-U0-G1	146.3
45W40LED	-	-	-	6579	B2-U0-G2	150.7	7004	B2-U0-G2	160.4	6878	B2-U0-G1	157.5	6672	B2-U0-G2	152.8	6787	B1-U0-G2	155.4	6287	B3-U0-G1	144.0
65W40LED	-	-	-	8869	B2-U0-G2	140.3	9442	B2-U0-G2	149.4	9273	B2-U0-G2	146.7	8995	B2-U0-G2	142.3	9150	B2-U0-G2	144.8	8475	B3-U0-G2	134.1
80W40LED	12019	B3-U0-G3	152.1	10882	B2-U0-G2	137.7	11584	B3-U0-G3	146.6	11376	B3-U0-G2	144.0	11036	B2-U0-G2	139.7	11226	B2-U0-G2	142.1	10398	B4-U0-G2	131.6
90W40LED	-	-	-	12217	B3-U0-G2	137.3	13006	B3-U0-G3	146.1	12773	B3-U0-G2	143.5	12391	B2-U0-G2	139.2	12604	B2-U0-G2	141.6	11675	B4-U0-G2	131.2
105W40LED	15073	B3-U0-G3	149.2	13775	B3-U0-G3	133.7	14664	B3-U0-G3	142.4	14401	B3-U0-G2	139.8	13970	B3-U0-G3	135.6	14210	B2-U0-G2	138.0	13162	B4-U0-G2	127.8
120W40LED	16776	B3-U0-G3	145.9	15337	B3-U0-G3	130.0	16327	B3-U0-G3	138.4	16034	B3-U0-G3	135.9	15555	B3-U0-G3	131.8	15822	B2-U0-G2	134.1	14656	B4-U0-G2	124.2
140W40LED	-	-	-	17533	B3-U0-G3	128.9	18665	B3-U0-G3	137.2	18330	B3-U0-G3	134.8	17782	B3-U0-G3	130.8	18087	B3-U0-G3	133.0	16754	B4-U0-G2	123.2
135W60LED	19443	B4-U0-G3	150.7	18539	B3-U0-G3	143.7	-	-	-	18786	B3-U0-G3	145.6	-	-	-	18335	B3-U0-G3	142.1	17398	B4-U0-G2	134.9
160W60LED	22049	B4-U0-G3	146.0	21024	B3-U0-G3	139.2	-	-	-	21304	B3-U0-G3	141.1	-	-	-	20792	B3-U0-G3	137.7	19730	B4-U0-G2	130.7
180W60LED	24249	B4-U0-G4	141.8	23122	B3-U0-G3	135.2	-	-	-	23431	B3-U0-G3	137.0	-	-	-	22868	B3-U0-G3	133.7	21700	B5-U0-G3	126.9
2700K / 70CRI																					
35W20LED	4784	B2-U0-G2	137.5	-	-	-	-	-	-	-	-	-	-	-	-	-	-	-	-	-	-
60W20LED	7624	B2-U0-G2	129.9	-	-	-	-	-	-	-	-	-	-	-	-	-	-	-	-	-	-
15W40LED	-	-	-	2110	B1-U0-G1	147.1	2246	B1-U0-G1	156.6	2206	B1-U0-G1	153.8	2140	B1-U0-G1	149.2	2176	B1-U0-G1	151.8	2016	B1-U0-G1	140.6
20W40LED	-	-	-	2802	B1-U0-G1	146.5	2983	B1-U0-G1	155.9	2930	B1-U0-G1	153.2	2842	B1-U0-G1	148.6	2891	B1-U0-G1	151.1	2678	B2-U0-G1	140.0
30W40LED	-	-	-	3789	B1-U0-G1	141.6	4033	B1-U0-G1	150.7	3961	B1-U0-G1	148.0	3843	B1-U0-G1	143.6	3908	B1-U0-G1	146.1	3620	B2-U0-G1	135.3
35W40LED	-	-	-	4787	B1-U0-G1	140.3	5096	B1-U0-G1	149.4	5004	B1-U0-G1	146.7	4855	B1-U0-G1	142.3	4938	B1-U0-G1	144.8	4574	B3-U0-G1	134.1
45W40LED	-	-	-	6031	B2-U0-G1	138.1	6420	B2-U0-G2	147.0	6305	B2-U0-G1	144.4	6116	B1-U0-G1	140.1	6221	B1-U0-G1	142.5	5763	B3-U0-G1	132.0
65W40LED	-	-	-	8130	B2-U0-G2	128.6	8655	B2-U0-G2	136.9	8500	B2-U0-G2	134.5	8246	B2-U0-G2	130.5	8387	B2-U0-G2	132.7	7769	B3-U0-G2	122.9
80W40LED	11018	B3-U0-G3	139.5	9975	B2-U0-G2	126.3	10619	B2-U0-G2	134.4	10428	B2-U0-G2	132.0	10117	B2-U0-G2	128.1	10290	B2-U0-G2	130.3	9532	B3-U0-G2	120.7
90W40LED	-	-	-	11199	B2-U0-G2	125.8	11922	B3-U0-G3	134.0	11708	B3-U0-G2	131.6	11358	B2-U0-G2	127.6	11553	B2-U0-G2	129.8	10702	B4-U0-G2	120.2
105W40LED	13817	B3-U0-G3	136.8	12627	B3-U0-G3	122.6	13442	B3-U0-G3	130.5	13201	B3-U0-G2	128.2	12806	B2-U0-G2	124.3	13026	B2-U0-G2	126.5	12066	B4-U0-G2	117.1
120W40LED	15378	B3-U0-G3	133.7	14059	B3-U0-G3	119.1	14967	B3-U0-G3	126.8	14698	B3-U0-G2	124.6	14259	B3-U0-G3	120.8	14503	B2-U0-G2	122.9	13434	B4-U0-G2	113.9
140W40LED	-	-	-	16072	B3-U0-G3	118.2	17110	B3-U0-G3	125.8	16803	B3-U0-G3	123.5	16300	B3-U0-G3	119.9	16580	B3-U0-G2	121.9	15358	B4-U0-G2	112.9
135W60LED	17822	B3-U0-G3	138.2	16994	B3-U0-G3	131.7	-	-	-	17221	B3-U0-G3	133.5	-	-	-	16807	B2-U0-G2	130.3	15948	B4-U0-G2	123.6
160W60LED	20211	B4-U0-G3	133.8	19272	B3-U0-G3	127.6	-	-	-	19529	B3-U0-G3	129.3	-	-	-	19059	B3-U0-G3	126.2	18086	B4-U0-G2	119.8
180W60LED	22229	B4-U0-G3	130.0	21195	B3-U0-G3	123.9	-	-	-	21478	B3-U0-G3	125.6	-	-	-	20962	B3-U0-G3	122.6	19891	B4-U0-G2	116.3

Actual performance may vary due to installation variables including optics, mounting/ceiling height, dirt depreciation, light loss factor, etc.; highly recommended to confirm performance with a layout - contact Applications at signify.com/outdoorluminaire. Consult DLC QPL to confirm your specific fixture selection is DLC approved.
 Note: Some data may be scaled based on tests of similar but not identical luminaires.

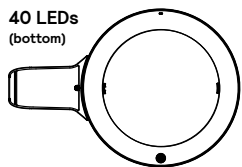
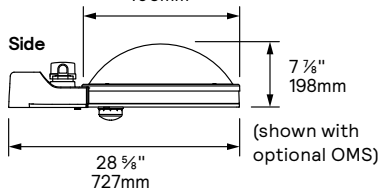
S-RSCF/S-RSCT RoadScape

LED Architectural Roadway

Dimensions

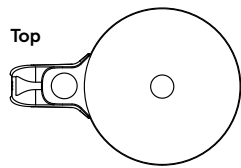


19 1/2"
495mm

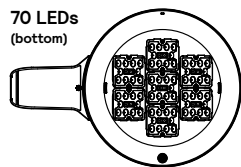
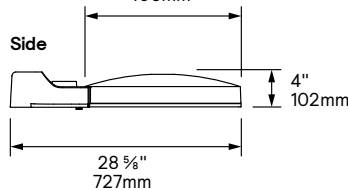


Dome roof

Weight: 30 lbs
EPA: 0.91 sq. feet

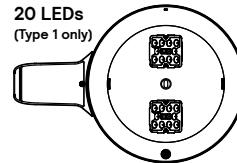


19 1/2"
495mm

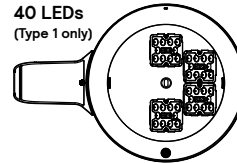


Flat roof

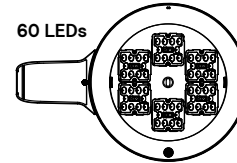
Weight: 27 lbs
EPA: 0.46 sq. feet



20 LEDs
(Type 1 only)

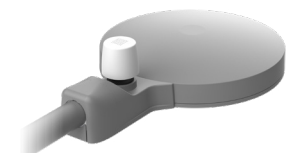


40 LEDs
(Type 1 only)



60 LEDs

Images



(shown with optional OMS)

Specifications

Housing

In a round shape, this housing is made of injection die cast A360.1 aluminium alloy 0.1 (2.5mm) minimum thickness mechanically assembled to the adaptor. Offers a tool free access to electrical components, rated IP66.

Adaptor

Made of cast 356 aluminium, fits on a 1.66" (42mm) O.D. (1.25" NPS), 1.9" (48mm) O.D. (1.5" NPS) or 2 3/8" (60mm) O.D. (2" NPS) by 4 1/4" (108mm) minimum long tenon. Comes with a zinc plated clamp fixed by 2 zinc plated hexagonal bolts 3/8 16 UNC for ease of installation. Provides an easy step adjustment of +/-5° tilt in 2.5° increments. Includes integral bubble level standard (always included). A secured removable door to prevent accidental dropping provides tool-free access to the terminal block. Rated IP54 per ANSI C136.37. Complete with a bird guard protecting against birds and similar intruders and an ANSI label as per C136.15 2020 to identify wattage and source (both included in box).

Light Engine

Composed of 4 main components: LED Module / Optical System / Heat Sink / Driver.

Electrical components are RoHS compliant, IP66 sealed light engine equipped LEDs tested by ISO 17025-2005 accredited lab in accordance with IESNA LM-80 guidelines in compliance with EPA ENERGY STAR, extrapolations in accordance with IESNA TM-21. Metal core board ensures greater heat transfer and longer lifespan.

Heat Sink: Made of cast aluminum optimising the LEDs efficiency and life. Product does not use any cooling device with moving parts (only passive cooling). Entire luminaire is rated for operation in ambient temperature of -40°C / -40°F up to +40°C / +104°F up to +50°C / +122°F unless otherwise specified, refer to LED Wattages Values Table.

LED Module: Composed of high-performance white LEDs. Color temperature as per ANSI/ NEMA bin 2700 Kelvin nominal (2725 ±145K), 3000 Kelvin nominal (3045K +/- 175K) or 4000 Kelvin nominal (3985K +/- 275K), CRI 70 Min. 75 Typical. Other CCT/ CRI also available, consult factory.

Optical System: Composed of high-performance UV stabilized optical grade polymer refractor lenses to achieve desired distribution optimized to get maximum spacing, target lumens and a superior lighting uniformity. System is rated IP66. Performance shall be tested per LM 63, LM 79 and TM 15 (IESNA) certifying its photometric performance. Luminaire designed with 0% uplight and UO per IESNA TM 15 and complies with Dark Sky requirements.

Driver: High power factor of 90% min. electronic driver, operating range 50/60 Hz. Auto adjusting voltage input, rated for both application line to line or line to neutral, Class I or 2, THD of 20% max. The current supplying the LEDs will be reduced by the driver if the driver experiences internal overheating as a protection to the LEDs and the electrical components. Output is protected from short circuits, voltage overload and current overload. Automatic recovery after correction.

Integrated Features

DMG: Dimmable driver 0-10V.

Surge Protection: Fail-On Surge protection device tested in accordance with ANSI/IEEE C62.45 per ANSI/IEEE C62.41.2 Scenario I Category C High Exposure 10kV/10kA waveforms for Line-Ground, Line-Neutral and Neutral-Ground, and in accordance with DOE MSSLC Model Specification for LED Roadway Luminaires Appendix D Electrical Immunity High test level 10kV/10kA.

Note: These integrated features always come with RoadFocus luminaire.

Driver and Luminaire Options

UNV: Universal voltage range (120-277VAC)

HVU: High voltage range (347-480VAC)

HVX: Extended voltage range (277-480VAC).

Provides additional protection for abnormal power conditions like neutral drop on 277V installations or others.

ZD4i*: Zhaga-D4i certified fixture. Provides easy integration with zD4i smart sensors and communication nodes, enabling plug-and-play IoT upgrades.

D4id*: DALI D4i certified driver. Provides extended DALI-2 functionality with power and data, especially for intra-luminaire DALI systems (Driver-Nodes-Sensors). Backward compatible with older DALI standards.

* These driver options ship with DALI bus power turned on and luminaire information loaded in Memory banks 1 as per ANSI C137.4 (2021). Consult factory for any other driver programming requirement.

S-RSCF/S-RSCT RoadScape

LED Architectural Roadway

Specifications (continued)

Driver and Luminaire Options (continued)

OMS: ZD4i certified Outdoor Multi Sensor. Contains multiple sensors to support different smart city applications. Offers standalone and connected functions, see sensor spec sheet for details. Shipped in luminaire box.

SP2: Fail-On 20kV / 10kA surge protection device that provides extra protection beyond the SP1 10kV/10kA level.

SP1X: Fail-Off Surge protection device tested in accordance with ANSI/IEEE C62.45 per ANSI/ IEEE C62.41.2 Scenario I Category C High Exposure 10kV/5kA waveforms for Line-Ground, Line-Neutral and Neutral-Ground, and in accordance with DOE MSSLC Model Specification for LED Roadway Luminaires Appendix D Electrical Immunity High test level 10kV/5kA.

SP2X: Fail-Off 20kV / 10kA surge protection device that provides extra protection beyond the SP1X 10kV/5kA level.

FAWS: Field Adjustable Wattage Selector, pre-set to the highest position, can be easily switched in the field to the required position. This reduces total luminaire wattage consumption and reduces the light level – see the FAWS multiplier chart for more details.

Note: It is not recommended to use FAWS with other dimming or controls; if you do, set the switch to position 10 (maximum output) to enable the other dimming or controls. Switching FAWS to any position other than 10 will disable other dimming or controls.

TLRD7: Tool less orientable receptacle with 7 pins enabling dimming and additional functionality (to be determined), can be used with a twist lock Interact City node or photoelectric cell or a shorting cap. Use of photoelectric cell or shorting cap is required to ensure proper illumination. Note: Additional hardware will be required to utilize the additional 2 pins on this receptacle.

TLRSR: 4-pin Zhaga Book 18 compliant receptacle designed for sensor and other control system applications. Mounted on underside of the luminaire, shipped with protective cover.

PH8: Twist-lock photoelectric cell, UNV (120-277VAC).

PHXL: Twist-lock photoelectric cell, extended life, UNV (120-277VAC).

PH9: Shorting cap (use of photoelectric cell or shorting cap is required to ensure proper illumination).

API: Factory Installed NEMA label, ANSI C136.15-2020 compliant. Consult factory for other labeling needs.

Connected Lighting

Interact City connector node provides the plug and play wireless communications technology to connect your street light to the Interact City lighting management system. With Interact you can remotely manage, monitor and control all city lighting, from roads and streets, to parks and plazas, and bridges from one single system. Connected lighting enables capabilities including, accurate on/off switching, dimming control, fault reporting and integration with other systems to enable condition-based lighting. Interact provides you with a robust and scalable infrastructure to further reduce energy consumption, improve operations, and turn lighting into a connected network for your smart city journey.

For more details visit: interact-lighting.com/en-us/what-is-possible/interact-city

Factory Installed Shield Options (one per Light Engine)

CSS: Cul-de-Sac Shield. Shields light output on the left and right side of fixture.

FSS: Front Side Shield. Shields light output on the front side of fixture.

HSS: House Side Shield. Shields light output to the back side of fixture.

LSS: Left Side Shield. Shields light output on the left side of fixture.

RSS: Right Side Shield. Shields light output on the right side of fixture.

Luminaire Useful Life

Refer to IES files for energy consumption and delivered lumens for each option. Based on ISTMT in situ thermal testing in accordance with UL1598 and UL8750, System Reliability Tool, Advance data and LED manufacturer LM-80/TM-21 data, expected to reach 100,000 + hours with >L70 lumen maintenance @ 25°C. Luminaire Useful Life accounts for LED lumen maintenance AND all of these additional factors including: LED life, driver life, PCB substrate, solder joints, on/off cycles, burning hours and corrosion. Wiring the connection of the luminaire is done using a terminal block connector 600V, 85A for use with #2 14 AWG. wires from the primary circuit, located inside the housing. Due to the inrush current that occurs with electronic drivers, recommend using a 10Amp time-delay fuse to avoid unwanted fuse blowing (false tripping) that can occur with normal or fast acting fuses.

Hardware

All exposed screws shall be complete with Ceramic primer seal to reduce seizing of the parts, also offers a high resistance to corrosion. All seals and sealing devices are made and/or lined with EPDM and/or silicone and/or rubber.

Finish

Color in accordance with the AAMA 2603 standard. Application of polyester powder coat paint (4 mils/100 microns) with ± 1 mils/24 microns of tolerance. The Thermosetting resins provides a discoloration resistant finish in accordance with the ASTM D2244 standard, as well as luster retention in keeping with the ASTM D523 standard and humidity proof in accordance with the ASTM D2247 standard. The surface treatment achieves a minimum of 5000 hours for salt spray resistant finish in accordance with testing performed and per ASTM B117 standard.

LED products manufacturing standard

The electronic components sensitive to electrostatic discharge (ESD) such as light emitting diodes (LEDs) are assembled in compliance with IEC61340-5-1 and ANSI/ESD S20.20 standards so as to eliminate ESD events that could decrease the useful life of the product.

Vibration Resistance

The S-RSC meets the ANSI C136.31-2018, American National Standard for Roadway Luminaire Vibration specs for Bridge/overpass applications.

Certifications and Compliance

cULus Listed for Canada and USA. Luminaire meets DOE and MSSLC Model Specification for LED Roadway Luminaires. Most versions of RoadFocus LED luminaires are DesignLights Consortium qualified, consult DLC QPL to confirm your specific fixture selection is approved. CCTs 3000K and warmer are IDA Dark Sky Approved. Luminaire complies with or exceeds the following ANSI C136 standards: .2, .3, .10, .14, .15, .22, .25, .31, .37, .41.

Service Tag

Each individual luminaire is uniquely identifiable, thanks to the Service tag application. With a simple scan of a QR code, placed on the inside of the mast door, you gain instant access to the luminaire configuration, making installation and maintenance operations faster and easier, no matter what stage of the luminaire's lifetime. Just download the APP and register your product.

For more details visit: signify.com/servicetag

Limited Warranty

10-year limited warranty. See signify.com/warranties for details and restrictions.

Brackets/Arms

For brackets / arms available with this luminaire, see Lumec 3D for details.

* These driver options ship with DALI bus power turned on and luminaire information loaded in Memory banks 1 as per ANSI C137.4 (2021). Consult factory for any other driver programming requirement.

© 2026 Signify Holding. All rights reserved. The information provided herein is subject to change, without notice. Signify does not give any representation or warranty as to the accuracy or completeness of the information included herein and shall not be liable for any action in reliance thereon. The information presented in this document is not intended as any commercial offer and does not form part of any quotation or contract, unless otherwise agreed by Signify.

GENLYTE
SOLUTIONS
a **signify** business

Signify North America Corp.
400 Crossing Blvd, Suite 600
Bridgewater, NJ 08807
Telephone: 800-555-0050

Signify Canada Ltd.
281 Hillmount Road,
Markham, ON, Canada L6C 2S3
Telephone: 800-668-9008

All trademarks are owned by Signify Holding or their respective owners.