

PHILIPS

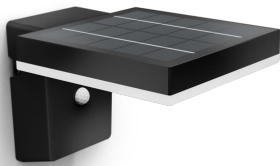
Zonal Wall Light
1.3W

Outdoor luminaires

3000K

Black

Sensor; Solar; Water Resistant



8720169265745



Enjoy a Beautiful garden with light, in a sustainable way

Philips has developed an UltraEfficient solar LED outdoor light that uses new technology to cut carbon emissions, reduce material waste, and lower energy usage. With an amazing 50,000 hour lifetime it lasts more than 5 times longer than the Philips LED outdoor light equivalents. Just what is needed for a more sustainable planet.

Easy installation

- No wiring required

Sustainable light solutions

- Long lifetime up to 50,000 hours
- Ultra Efficient Solar

Advanced LED light

- High quality LED light

Special characteristics

- Dual-brightness light

Highlights

No wiring required



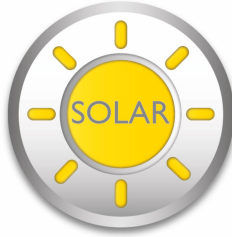
This light is powered entirely by solar energy. No wiring is needed, making these lights easy to position and reposition anywhere in your garden or other outdoor area.

Long lifetime up to 50,000 hours



Reliable high-quality LED light lasts up to 50,000 hours. You can rest easy knowing that you won't have to worry about maintenance for years, while enjoying the perfect garden light every night.

Ultra Efficient Solar



With the Philips Ultra Efficient Solar system, these luminaires provide light for up to 25 hours on a fully-charged battery. Enjoy bright light all night, or even in bad or overcast weather conditions.

High quality LED light



These LED lights use a unique technology developed by Philips. They turn on instantly and produce optimal light output that brings out the vivid colors in your garden.

Dual-brightness light

Create a flexible and appealing ambiance with the dual-brightness feature. The light dims when idle and automatically brightens when people are present, delivering the right level of light whenever you need it.

Specifications

Design and finishing

- Color: Black
- Material: Plastic

Durability

- Nominal lifetime: 50,000

Environmental

- Disposal of the product: At the end of (economic) life, dispose the product according to local rules and do not dispose the product with regular household waste. The correct disposal of your product will help prevent potential negative consequences for the environment and human health.

Extra feature/accessory incl.

- 5 years warranty on the LED module: Yes
- Adjustable spot head: No
- Anti rust anti dust: Yes
- Bi-directional light beams: No
- Day-and-night sensor: Yes
- Fully weatherproof: Yes
- LED integrated: Yes
- Motion sensor: Yes
- Solar Energy: Yes
- Warm White Light: No
- Centerpiece: No

Garden area

- Garden area: Garden & Patio

Light characteristics

- Color rendering index (CRI): 80

Miscellaneous

- Especially designed for: Garden & Patio
- Style: Contemporary
- Type: Wall Lights
- EyeComfort: No
- LED Innovations: UltraEfficient
- Extra Features: Sensor, Solar, Water Resistant

Product dimensions and weight

- Net weight: 0.65 kg
- Height: 13.5 cm
- Length: 20.6 cm
- Width: 16 cm

Service

- Warranty: 5 year(s)

Technical specifications

- Total lumen output fixture: 250/25
- Light color: 3000K
- Mains power: 4 V
- Fixture dimmable: No
- Energy class included light source: A
- Maximum wattage replacement bulb: 1.3
- IP code: IP44
- Class of protection: Class III - Safe Extra Low Voltage
- Light source replaceable: No

Packaging dimensions and weight

- EAN/UPC - product: 8720169265745
- Net weight: 0.65 kg
- Gross weight: 0.75 kg
- Height: 21.4 cm
- Length: 14.2 cm
- Width: 16.7 cm



Issue date: 2025-06-16
Version: 0.296

© 2025 Signify Holding. All rights reserved. Signify does not give any representation or warranty as to the accuracy or completeness of the information included herein and shall not be liable for any action in reliance thereon. The information presented in this document is not intended as any commercial offer and does not form part of any quotation or contract, unless otherwise agreed by Signify. Philips and the Philips Shield Emblem are registered trademarks of Koninklijke Philips N.V.

www.lighting.philips.com