

# PHILIPS

Track Light  
Accessory 10x

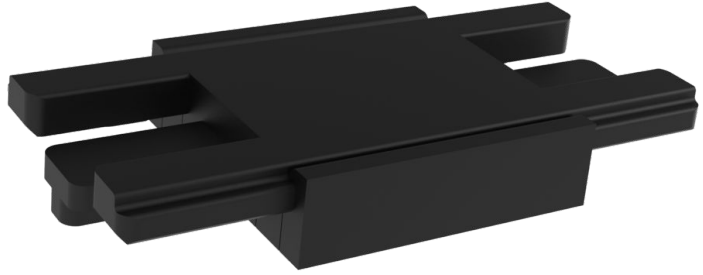
Accessory

Connector

Black



8720169393714



## Slim and Flexible slim lighting track

Comfort lighting system with super slim design

### High quality light

- EyeComfort – light that's easy on your eyes

### Match your interior

- Expressive and elegant form
- Super slim design

# Highlights

## EyeComfort – light that's easy on your eyes



Poor quality light can cause eye strain. With many of us spending time indoors, it's more important than ever to properly light your home. Our products meet stringent test criteria including flicker, strobe, glare, colour rendition and dimming effects to ensure they meet EyeComfort requirements. This Philips LED luminaire not only delivers comfortable light, but also stays that way for the duration of their lifespan, delivering

consistent light quality, output and colour for more than a decade.

## Expressive and elegant form

A clean, modern design provides elegance and sophistication to your rooms.

## Super slim design

Slim design is ideal for low-ceiling rooms, sitting flush against the surface.

# Specifications

## Bulb characteristics

- Intended use: Indoor

## Design and finishing

- Color: Black
- Material: Metal

## Environmental

- Disposal of the product: At the end of (economic) life, dispose the product according to local rules and do not dispose the product with regular household waste. The correct disposal of your product will help prevent potential negative consequences for the environment and human health.

## Extra feature/accessory incl.

- Adjustable spot head: Not adjustable
- click!FIX mounting: No
- Dimmable with remote control: No
- LED integrated: No
- Remote control included: No

## Light characteristics

- Warm-up time to 60% light: 2

## Miscellaneous

- Especially designed for: Bedroom, Dining Room, Office, Living Room
- Style: Modern
- Type: Accessories

## Other characteristics

- Lamp current: 4000 mA

## Product dimensions and weight

- Net weight: 0.003 kg
- Overall height: 10 mm
- Overall length: 40 mm
- Overall width: 20 mm

## Service

- Warranty: 3 year(s)

## Technical specifications

- Mains power: DC 48
- Fixture dimmable: No
- Energy class included light source: not applicable
- IP code: IP20 | Finger-protected
- Class of protection: Class III – Safe Extra Low Voltage

## Packaging dimensions and weight

- EAN/UPC – product: 8720169393714
- Net weight: 0 kg
- Gross weight: 0.01 kg
- Height: 4.5 cm
- Length: 4.2 cm
- Width: 3 cm



Issue date: 2025-08-30  
Version: 0.247

© 2025 Signify Holding. All rights reserved. Signify does not give any representation or warranty as to the accuracy or completeness of the information included herein and shall not be liable for any action in reliance thereon. The information presented in this document is not intended as any commercial offer and does not form part of any quotation or contract, unless otherwise agreed by Signify. Philips and the Philips Shield Emblem are registered trademarks of Koninklijke Philips N.V.

[www.lighting.philips.com](http://www.lighting.philips.com)