



Philips PowerBalance Gen2: sustainable performance

PowerBalance gen2

When it comes to lighting office spaces with LED luminaires, businesses are willing to invest in sustainability, provided they get a payback on their investment. At the same time, the system should comply with office lighting norms to ensure a comfortable working environment. Philips PowerBalance Gen2 is our most energy-efficient, office-compliant LED luminaire. Designed for circularity and enhanced wellbeing, this office luminaire also promises future-proof connectivity. State-of-the-art efficacy (at CRI >90), upgradability features, a long lifetime, repairability, and design for recyclability make PowerBalance Gen2 a true 'green choice'. One that also delivers significantly lower operational costs to ensure an attractive payback that meets the needs of businesses and the specification market. The Gen2 architecture in the latest PowerBalance range has enabled us to create a range of highly-versatile modular and semi-modular luminaires. These LED luminaires can be easily mounted in ceilings with an exposed T-bar or concealed T-bar, as well as plaster ceilings and bandrastrer-type ceilings. PowerBalance is a solution with superior lighting specifications combined with a best-in-class connectivity designed for Circularity & enhanced Wellbeing using Interact Pro - all with a sustainable approach to high-performance office lighting.

Benefits

- Extremely-efficient LED luminaire with upto 174 lm/W
- Complies with office norms
- Comfortable, glare-free light
- Significantly reduces operational costs for an attractive payback time
- Sustainable and best-in-class connected offer

Features

- Best-in-class efficacy up to 174lm/W supports green building design and energy saving subsidy criteria
- 3000K, 4000K, Tunable White options with CRI >90
- Long lifetime 50,000 hours @L90
- Prepared for circularity (no glue, replaceable electronics, upgradable system, efficient and long lifetime)
- Environmental Product Declaration (EPD) guide
- Connected system ready with Interact Pro scalable platform using integrated sensors and/or wireless drivers for data collection, occupancy, daylight regulation and wayfinding

Application

- Offices
- Education
- Healthcare

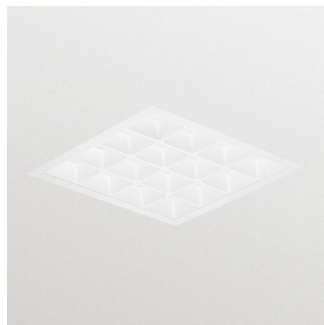
Warnings and Safety

- The product is IP20 and, as such, is not protected against water ingress. Therefore we strongly recommend that the environment in which the luminaire is to be installed should be suitably checked
- If the advice above is not taken and the luminaires are subject to water ingress, Philips / Signify cannot guarantee safe failure and the product warranty will become void

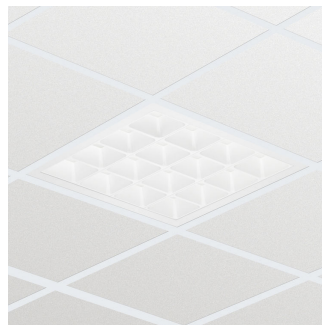
Versions



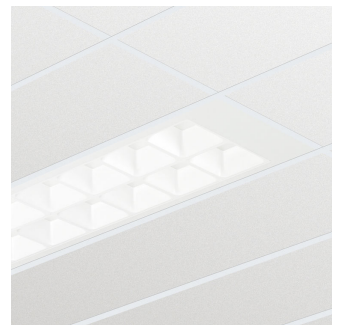
IPPR RC460Bi 0025



IPPR_RC460Bi_0043-Product photo

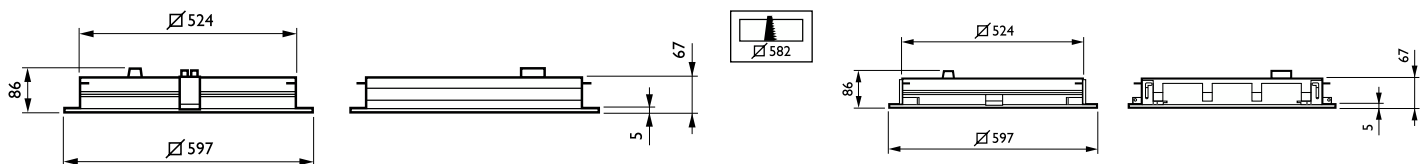


IPPR RC460Bi 0047

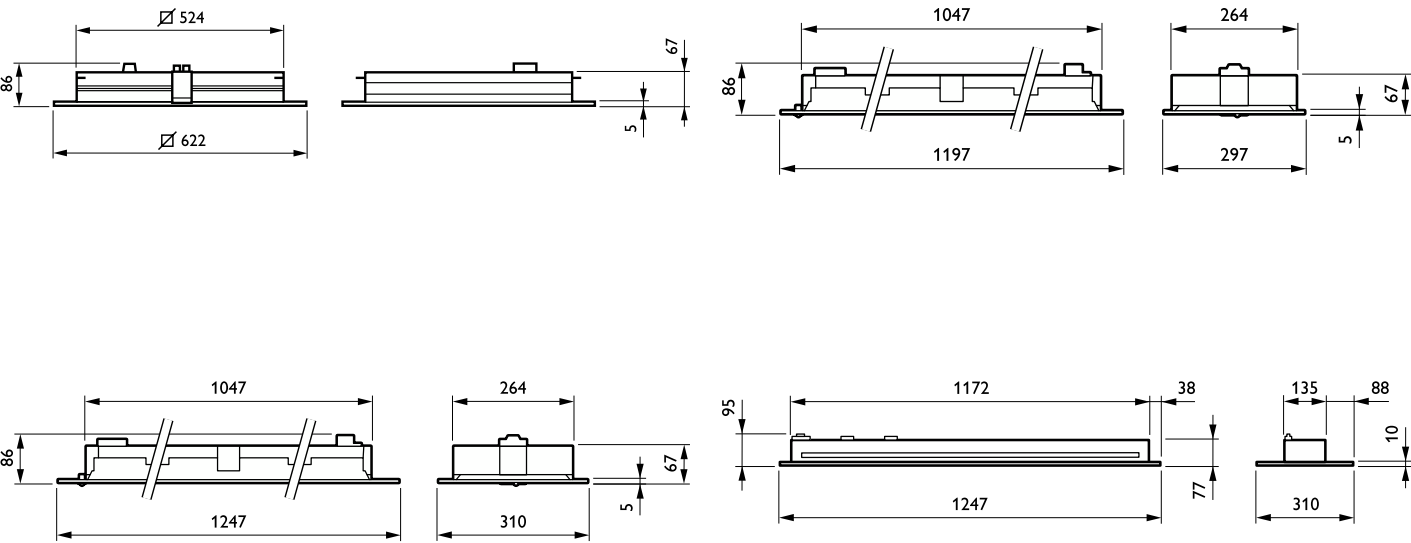


IPPR RC460Bi 0069

Dimensional drawing



Dimensional drawing



Product details



IPDP_RC460Bi_0153-Detail photo



IPDP_RC460Bi_0039-Detail photo

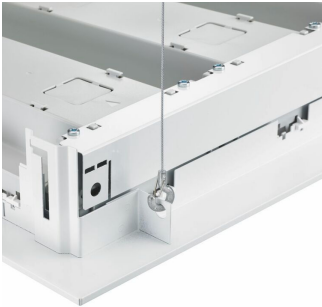


IPDP_RC460Bi_0041-Detail photo



IPDP_RC460Bi_0043-Detail photo

Product details



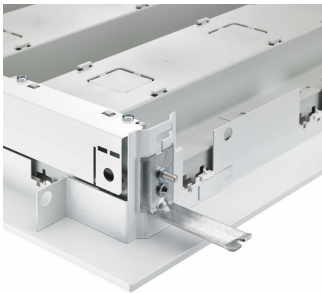
IPDP_RC460Bi_0045-Detail photo



IPDP_RC460Bi_0047-Detail photo



IPDP_RC460Bi_0049-Detail photo



IPDP_RC460Bi_0051-Detail photo



IPDP_RC460Bi_0053-Detail photo



IPDP_RC460Bi_0054-Detail photo



IPDP_RC460Bi_0055-Detail photo



IPDP_RC460Bi_0073-Detail photo

Product details

IPDP_RC460Bi_0103-Detail photo



PowerBalance gen2

General Information	
CE mark	Yes
Driver included	Yes
ENEC mark	ENEC mark
Flammability mark	For mounting on normally flammable surfaces
Gear	-
Glow-wire test	Temperature 650 °C, duration 30 s
Light source replaceable	No
Number of gear units	1 unit
Light Technical	
Beam angle of light source	120 degree(s)
Color rendering index (CRI)	≥90
Optic type	Wide beam office compliant
Flickering value (PstLM) - Flickering value as per EN 61000-3-3	1
Stroboscopic effect visibility measure (SVM)	0.4
Operating and Electrical	
Input Voltage	220 to 240 V
Line Frequency	50 to 60 Hz
Temperature	
Ambient temperature range	+10 to +40 °C
Mechanical and Housing	
Housing Color	White
Approval and Application	
Protection class IEC	Safety class I
Mech. impact protection code	IK02
Ingress protection code	IP20/40
Initial Performance (IEC Compliant)	
Initial chromaticity	(0.38, 0.38) SDCM <3
Luminous flux tolerance	+/-10%
Application Conditions	
Maximum dim level	1%

General Information

Order Code	Full Product Name	Lamp family code	Product family code	Service tag
910505100265	RC461B LED34S/940 PSD W60L60 CPC W	LED34S	RC461B	Yes
910505100277	RC461B LED34S/940 PSD W60L60 PCV PIP	LED34S	RC461B	Yes
910505100278	RC463B LED40S/940 PSD W62L62 VPC PIP	LED40S	RC463B	Yes
910505100416	RC463B LED28S/940 PSD W62L62 VPC PIP	-	RC463B	Yes
910505100417	RC463B LED34S/940 PSD W62L62 VPC PIP	-	RC463B	Yes
910505100488	RC463B LED28S/930 PSD W62L62 VPC PIP	-	RC463B	Yes
910505100245	RC461B LED34S/940 PSD W60L60 VPC PIP	LED34S	RC461B	Yes
910505100249	RC461B LED40S/940 PSD W60L60 VPC W	LED40S	RC461B	Yes
910505100250	RC461B LED40S/940 PSD W60L60 VPC PIP	LED40S	RC461B	Yes
910505100266	RC461B LED40S/940 PSD W60L60 VPC W AIR	LED40S	RC461B	Yes
910505100269	RC461B LED34S/930 PSU W60L60 VPC PIP	LED34S	RC461B	Yes
910505100270	RC461B LED34S/940 PSD W60L60 VPC W SC	LED34S	RC461B	Yes
910505100595	RC461B LED40S/930 PSD W60L60 VPC PIP	-	RC461B	Yes
910505100236	RC463B LED40S/940 PSD W31L125 CPC PIP	LED40S	RC463B	Yes
910505100423	RC463B LED40S/940 PSD W31L125 VPC PIP	-	RC463B	Yes
910505101668	RC463B LED80S/TW9 DIA W31L125 VPC PIP	-	RC463B	-
910505100234	RC461B LED34S/930 PSD W30L120 VPC PIP	LED34S	RC461B	Yes
910505100235	RC461B LED40S/940 PSD W30L120 VPC PIP	LED40S	RC461B	Yes
910505100238	RC461B LED40S/940 PSD W30L120 VPC W	LED40S	RC461B	Yes
910505100241	RC461B LED34S/940 PSD W30L120 VPC PIP	LED34S	RC461B	Yes
910505101666	RC461B LED80S/TW9 DIA W30L120 VPC PIP	-	RC461B	-

Light Technical (1/2)

Order Code	Full Product Name	Correlated Color	Optical cover type	Luminous Efficacy	Luminous Flux
		Temperature (Nom)		(rated) (Nom)	
910505100265	RC461B LED34S/940 PSD W60L60 CPC W	4000 K	Polycarbonate bowl/cover	139 lm/W	3,400 lm
910505100277	RC461B LED34S/940 PSD W60L60 PCV PIP	4000 K	Polycarbonate bowl/cover	139 lm/W	3,400 lm
910505100278	RC463B LED40S/94 O PSD W62L62 VPC PIP	4000 K	Polycarbonate bowl/cover	143 lm/W	4,000 lm
910505100416	RC463B LED28S/940 PSD W62L62 VPC PIP	4000 K	-	147 lm/W	2,800 lm
910505100417	RC463B LED34S/940 PSD W62L62 VPC PIP	4000 K	-	139 lm/W	3,400 lm
910505100488	RC463B LED28S/930 PSD W62L62 VPC PIP	3000 K	-	137 lm/W	2,800 lm
910505100245	RC461B LED34S/940 PSD W60L60 VPC PIP	4000 K	Polycarbonate bowl/cover	139 lm/W	3,400 lm
910505100249	RC461B LED40S/94 O PSD W60L60 VPC W	4000 K	Polycarbonate bowl/cover	143 lm/W	4,000 lm
910505100250	RC461B LED40S/94 O PSD W60L60 VPC PIP	4000 K	Polycarbonate bowl/cover	143 lm/W	4,000 lm
910505100266	RC461B LED40S/94 O PSD W60L60 VPC W AIR	4000 K	Polycarbonate bowl/cover	143 lm/W	4,000 lm
910505100269	RC461B LED34S/930 PSU	3000 K	Polycarbonate bowl/cover	133 lm/W	3,400 lm

Order Code	Full Product Name	Correlated Color	Optical cover type	Luminous Efficacy	Luminous Flux
		Temperature (Nom)		(rated) (Nom)	
910505100270	W60L60 VPC PIP	4000 K	Polycarbonate bowl/cover	139 lm/W	3,400 lm
	RC461B				
	LED34S/940				
	PSD				
	W60L60 VPC W SC				
910505100595	RC461B	3000 K	-	136 lm/W	4,000 lm
	LED40S/930				
	PSD				
	W60L60				
	VPC PIP				
910505100236	RC463B	4000 K	Polycarbonate bowl/cover	143 lm/W	4,000 lm
	LED40S/94				
	O PSD				
	W31L125				
	CPC PIP				
910505100423	RC463B	4000 K	-	143 lm/W	4,000 lm
	LED40S/94				
	O PSD				
	W31L125				
	VPC PIP				
910505101668	RC463B	Tunable white 2700-6500 K	-	130 lm/W	7,700 lm
	LED80S/TW				
	9 DIA				
	W31L125				
	VPC PIP				
910505100234	RC461B	3000 K	Polycarbonate bowl/cover	133 lm/W	3,400 lm
	LED34S/930				
	PSD				
	W30L120				
	VPC PIP				
910505100235	RC461B	4000 K	Polycarbonate bowl/cover	143 lm/W	4,000 lm
	LED40S/94				
	O PSD				
	W30L120				
	VPC PIP				
910505100238	RC461B	4000 K	Polycarbonate bowl/cover	128 lm/W	4,000 lm
	LED40S/94				
	O PSD				
	W30L120				
	VPC W				
910505100241	RC461B	4000 K	Polycarbonate bowl/cover	139 lm/W	3,400 lm
	LED34S/940				
	PSD				
	W30L120				
	VPC PIP				
910505101666	RC461B	Tunable white 2700-6500 K	-	130 lm/W	7,700 lm

Order Code	Full Product Name	Correlated Color		Luminous Efficacy (rated)	
		Temperature (Nom)	Optical cover type	(Nom)	Luminous Flux
	9 DIA				
	W30L120				
	VPC PIP				

Light Technical (2/2)

Order Code	Full Product Name	Number of light sources
910505100265	RC461B LED34S/940 PSD W60L60 CPC W	1
910505100277	RC461B LED34S/940 PSD W60L60 PCV PIP	1
910505100278	RC463B LED40S/940 PSD W62L62 VPC PIP	1
910505100416	RC463B LED28S/940 PSD W62L62 VPC PIP	-
910505100417	RC463B LED34S/940 PSD W62L62 VPC PIP	-
910505100488	RC463B LED28S/930 PSD W62L62 VPC PIP	-
910505100245	RC461B LED34S/940 PSD W60L60 VPC PIP	1
910505100249	RC461B LED40S/940 PSD W60L60 VPC W	1
910505100250	RC461B LED40S/940 PSD W60L60 VPC PIP	1
910505100266	RC461B LED40S/940 PSD W60L60 VPC W AIR	1
910505100269	RC461B LED34S/930 PSU W60L60 VPC PIP	1

Order Code	Full Product Name	Number of light sources
910505100270	RC461B LED34S/940 PSD W60L60 VPC W SC	1
910505100595	RC461B LED40S/930 PSD W60L60 VPC PIP	-
910505100236	RC463B LED40S/940 PSD W31L125 CPC PIP	1
910505100423	RC463B LED40S/940 PSD W31L125 VPC PIP	-
910505101668	RC463B LED80S/TW9 DIA W31L125 VPC PIP	-
910505100234	RC461B LED34S/930 PSD W30L120 VPC PIP	1
910505100235	RC461B LED40S/940 PSD W30L120 VPC PIP	1
910505100238	RC461B LED40S/940 PSD W30L120 VPC W	1
910505100241	RC461B LED34S/940 PSD W30L120 VPC PIP	1
910505101666	RC461B LED80S/TW9 DIA W30L120 VPC PIP	-

Operating and Electrical

Order Code	Full Product Name	Power Consumption
910505100265	RC461B LED34S/940 PSD W60L60 CPC W	24 W
910505100277	RC461B LED34S/940 PSD W60L60 PCV PIP	24 W
910505100278	RC463B LED40S/940 PSD W62L62 VPC PIP	28 W
910505100416	RC463B LED28S/940 PSD W62L62 VPC PIP	19 W
910505100417	RC463B LED34S/940 PSD W62L62 VPC PIP	24 W
910505100488	RC463B LED28S/930 PSD W62L62 VPC PIP	20.5 W
910505100245	RC461B LED34S/940 PSD W60L60 VPC PIP	24 W
910505100249	RC461B LED40S/940 PSD W60L60 VPC W	28 W
910505100250	RC461B LED40S/940 PSD W60L60 VPC PIP	28 W
910505100266	RC461B LED40S/940 PSD W60L60 VPC W AIR	28 W
910505100269	RC461B LED34S/930 PSU W60L60 VPC PIP	25.5 W

Order Code	Full Product Name	Power Consumption
910505100270	RC461B LED34S/940 PSD W60L60 VPC W SC	24 W
910505100595	RC461B LED40S/930 PSD W60L60 VPC PIP	29.5 W
910505100236	RC463B LED40S/940 PSD W31L125 CPC PIP	28 W
910505100423	RC463B LED40S/940 PSD W31L125 VPC PIP	28 W
910505101668	RC463B LED80S/TW9 DIA W31L125 VPC PIP	64 W
910505100234	RC461B LED34S/930 PSD W30L120 VPC PIP	25.5 W
910505100235	RC461B LED40S/940 PSD W30L120 VPC PIP	28 W
910505100238	RC461B LED40S/940 PSD W30L120 VPC W	28 W
910505100241	RC461B LED34S/940 PSD W30L120 VPC PIP	24 W
910505101666	RC461B LED80S/TW9 DIA W30L120 VPC PIP	64 W

Controls and Dimming

Order Code	Full Product Name	Dimmable
910505100265	RC461B LED34S/940 PSD W60L60 CPC W	Yes
910505100277	RC461B LED34S/940 PSD W60L60 PCV PIP	Yes
910505100278	RC463B LED40S/940 PSD W62L62 VPC PIP	Yes
910505100416	RC463B LED28S/940 PSD W62L62 VPC PIP	Yes
910505100417	RC463B LED34S/940 PSD W62L62 VPC PIP	Yes
910505100488	RC463B LED28S/930 PSD W62L62 VPC PIP	Yes
910505100245	RC461B LED34S/940 PSD W60L60 VPC PIP	Yes
910505100249	RC461B LED40S/940 PSD W60L60 VPC W	Yes
910505100250	RC461B LED40S/940 PSD W60L60 VPC PIP	Yes
910505100266	RC461B LED40S/940 PSD W60L60 VPC W AIR	Yes
910505100269	RC461B LED34S/930 PSU W60L60 VPC PIP	No

Order Code	Full Product Name	Dimmable
910505100270	RC461B LED34S/940 PSD W60L60 VPC W SC	Yes
910505100595	RC461B LED40S/930 PSD W60L60 VPC PIP	Yes
910505100236	RC463B LED40S/940 PSD W31L125 CPC PIP	Yes
910505100423	RC463B LED40S/940 PSD W31L125 VPC PIP	Yes
910505101668	RC463B LED80S/TW9 DIA W31L125 VPC PIP	Yes
910505100234	RC461B LED34S/930 PSD W30L120 VPC PIP	Yes
910505100235	RC461B LED40S/940 PSD W30L120 VPC PIP	Yes
910505100238	RC461B LED40S/940 PSD W30L120 VPC W	Yes
910505100241	RC461B LED34S/940 PSD W30L120 VPC PIP	Yes
910505101666	RC461B LED80S/TW9 DIA W30L120 VPC PIP	Yes

Application Conditions

Order Code	Full Product Name	Suitable for random switching
910505100265	RC461B LED34S/940 PSD W60L60 CPC W	No
910505100277	RC461B LED34S/940 PSD W60L60 PCV PIP	No
910505100278	RC463B LED40S/940 PSD W62L62 VPC PIP	No
910505100416	RC463B LED28S/940 PSD W62L62 VPC PIP	No
910505100417	RC463B LED34S/940 PSD W62L62 VPC PIP	No
910505100488	RC463B LED28S/930 PSD W62L62 VPC PIP	No
910505100245	RC461B LED34S/940 PSD W60L60 VPC PIP	No
910505100249	RC461B LED40S/940 PSD W60L60 VPC W	No
910505100250	RC461B LED40S/940 PSD W60L60 VPC PIP	No
910505100266	RC461B LED40S/940 PSD W60L60 VPC W AIR	No
910505100269	RC461B LED34S/930 PSU W60L60 VPC PIP	No
910505100270	RC461B LED34S/940 PSD W60L60 VPC W SC	No
910505100595	RC461B LED40S/930 PSD W60L60 VPC PIP	Yes (relates to presence/ movement

Order Code	Full Product Name	Suitable for random switching
		detection and daylight harvesting)
910505100236	RC463B LED40S/940 PSD W31L125 CPC PIP	No
910505100423	RC463B LED40S/940 PSD W31L125 VPC PIP	No
910505101668	RC463B LED80S/TW9 DIA W31L125 VPC PIP	No
910505100234	RC461B LED34S/930 PSD W30L120 VPC PIP	No
910505100235	RC461B LED40S/940 PSD W30L120 VPC PIP	No
910505100238	RC461B LED40S/940 PSD W30L120 VPC W	No
910505100241	RC461B LED34S/940 PSD W30L120 VPC PIP	No
910505101666	RC461B LED80S/TW9 DIA W30L120 VPC PIP	No

