

ArenaVision LED gen3.5 – Revolutionizing the pitch-lighting experience

ArenaVision LED gen3.5

The Philips ArenaVision LED floodlighting system is an innovative LED pitch-lighting solution supporting the latest TV broadcasting standards. Designed exclusively for sports and multi-purpose venues, ArenaVision LED offers outstanding light quality, effective thermal management, and long lifetime. When combined with control applications such as the InteractSports lighting management system, ArenaVision LED can simplify the delivery of the right illumination by scheduling or through real-time adjustments and can be used to create customized light shows before, during and after the main event. To ensure optimized use for both indoor and outdoor applications, the floodlight range includes two single piece pressure die cast housing versions, hosting 2 and 3 LED engines respectively. These versions also function with an external driver box – separate for use at a distance from the floodlight (BV version), or pre-fixed onto the mounting bracket of the floodlight (HGB version). This external driver box ensures ease of installation and lower initial cost.

ArenaVision LED gen3.5

Benefits

- Maximum design flexibility to fit different stadium architectures and high lighting quality – compliant with international broadcasting standards for any type of sports
- The single High-Power IP66 rated, DMX driver enables ArenaVision LED to be connected to the Interact Sports lighting management system, thereby enabling remote light management and creation of dynamic light shows
- While delivering maximum light output the floodlight has an excellent thermal management system, which in combination with its low weight and IP66 rating helps maximize lifetime and minimize maintenance costs for both new built and retrofit installations
- Equipped with Service tag, a QR-based identification system that makes each luminaire uniquely identifiable and provides maintenance, installation and spare part information

Features

- Single piece pressure die cast housing, with a protection level of IP66 against dust and water
- Wide range of asymmetrical and symmetrical optics ensuring low glare and best in class lighting uniformity exceeding the requirements of all types of sports lighting level standards
- Wide range of ambient temperature tolerance making it suitable for a variety of sports applications
- Option to add additional accessories to achieve best in class glare and up-light control
- Programmable DMX Driver to enable programming and integration with entertainment lighting fixtures and other Interact Sports applications

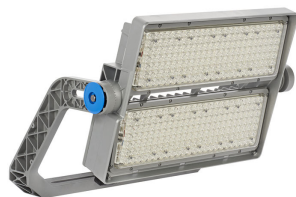
Application

- Outdoor arenas, stadiums and Racing tracks (Cricket, Football, Rugby, Tennis, Hockey, Golf, Ice skating, Horse racing, F1 racing, Athletics, etc.)
- Indoor sports arenas and halls (Swimming pools, Velodromes, Basketball, Ice hockey, etc.)
- Multiple and multipurpose sports facilities and arenas

Versions



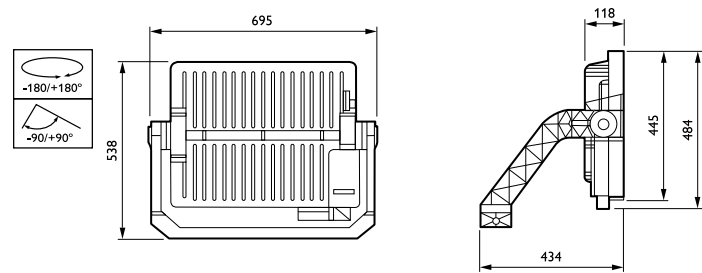
ArenaVision LED gen3 5



ArenaVision LED gen3 5

ArenaVision LED gen3.5

Dimensional drawing



General Information	
CE mark	CE mark
Driver included	Yes
Flammability mark	-
Number of gear units	1 unit
Service tag	Yes
Light Technical	
Luminaire light beam spread	2° x 10°
Light source color	957 cool white
Correlated Color Temperature (Nom)	5700 K
Optical cover type	Polycarbonate bowl/cover clear
Color rendering index (CRI)	>90
Optic type outdoor	Symmetrical
Standard tilt angle side entry	-
Standard tilt angle posttop	0°
Upward light output ratio	0
Controls and Dimming	
Dimmable	Yes
Mechanical and Housing	
Housing Color	Aluminum
Approval and Application	
Mech. impact protection code	IK08
Ingress protection code	IP66
Surge Protection (Common/ Differential)	Surge protection level until 10 kV differential mode

General Information

Order Code	Full Product Name	Lamp family code	Product family code
912300060420	BVP428 2200/957 BV S2 T35 OUT PSDMX	LED2200	BVP428
912300060411	BVP418 1470/957 BV S2 T35 OUT PSDMX	LED1470	BVP418

Light Technical

Order Code	Full Product Name	Luminous Flux
912300060420	BVP428 2200/957 BV S2 T35 OUT PSDMX	193,600 lm

Order Code	Full Product Name	Luminous Flux
912300060411	BVP418 1470/957 BV S2 T35 OUT PSDMX	130,830 lm

Operating and Electrical

ArenaVision LED gen3.5

Order Code	Full Product Name	Power Consumption
912300060420	BVP428 2200/957 BV S2 T35 OUT PSDMX	1,500 W

Order Code	Full Product Name	Power Consumption
912300060411	BVP418 1470/957 BV S2 T35 OUT PSDMX	1,010 W

