



Upgrading your traditional luminaire installation base to a more energy-efficient, future-proof LED alternative.

Heritage LED retrofit kit

Specially designed for conventional luminaires and first generation LED variants, our IP66 heritage LED retrofit kit delivers several powerful advantages: existing installations become more energy-efficient, and safer, with a more reliable enclosure rating (IP66). In addition, the historical or traditional aesthetic of the luminaire is completely preserved. Thanks to its dedicated passe-partouts range, the heritage LED kit enables a quick and easy retrofit in our conventional (or LED) Villa, Jargeau, Micenas 1 and 2 luminaires while a universal and adjustable passe-partout completes the range and enables retrofit in most of other types of squarish luminaires, including non-Philips luminaires. The heritage LED retrofit kit comes with a wide range of application-tailored optics, enabling point-to-point replacement of conventional light sources. Its high-performing Philips Ledgine optimized LED platform enables significant cost savings compared to conventional street lighting, and offers a short payback period. The heritage LED retrofit kit offers a large choice of standard warm color temperatures, this helps ensure that the installation retains the warm atmosphere of sodium lamps. The heritage LED retrofit kit is designed for customers looking for ways to cut their energy and maintenance costs with an easy-to-install solution while preserving the historical aesthetic of their installations. It also makes luminaires ready for future upgrades.

Heritage LED retrofit kit

Benefits

- Dedicated or adjustable solution, ready for future upgrades: designed to last over time and able to accommodate technological change
- Energy-efficient luminaire: saves energy costs of up to 40 – 60% compared to old conventional installation
- Reliable and long lifetime: reduced maintenance costs and longer lifetime – up to 100K hours

Features

- IP66 LED retrofit kit, both driver and optical unit, for maximum safety and reliability over long lifetime
- Easy adaptation to any squarish heritage luminaire: dedicated passe-partout (Villa, Jargeau, Miconas 1 & 2 product families) or adjustable one (for luminaires sizes between 305x305 mm up to 405x405 mm – luminaire inner dimensions)
- Large choice of color temperatures: 2200K, 2700K, 3000K and 4000K
- Easy and quick installation on site
- Further optimization on performance flux level enabled by the Philips L-Tune

Application

- Road and Street
- Residential
- Parks and Plazas

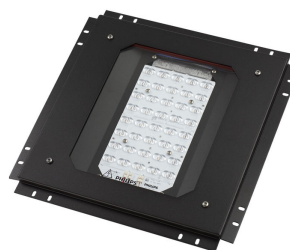
Warnings and Safety

- With the exception of integration of this product in Philips Jargeau, Villa or Miconas 1 luminaire, conventional or LED variants, Signify N.V. cannot accept any liability with regards to the mechanical fixation of this product into any other luminaire or on/in any other mounting construction, and to all fixation related aspects. It is the sole responsibility of the customer to ensure that this product is mounted and fixed in a safe and reliable manner.

Versions



Villa LED retrofit kit with white mask



Miconas 2 LED retrofit kit with black mask

Heritage LED retrofit kit

Versions



Villa LED retrofit kit with black mask



Micenas 1 LED retrofit kit with black mask

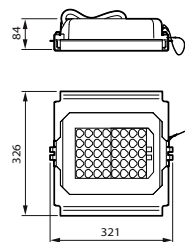
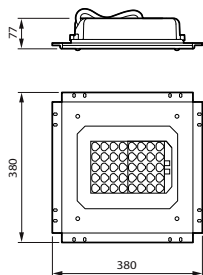
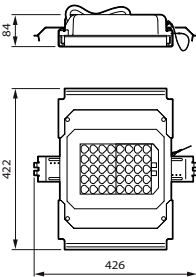
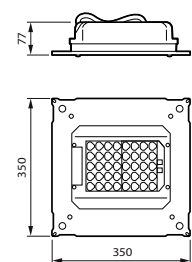


Jargeau LED retrofit kit with white mask



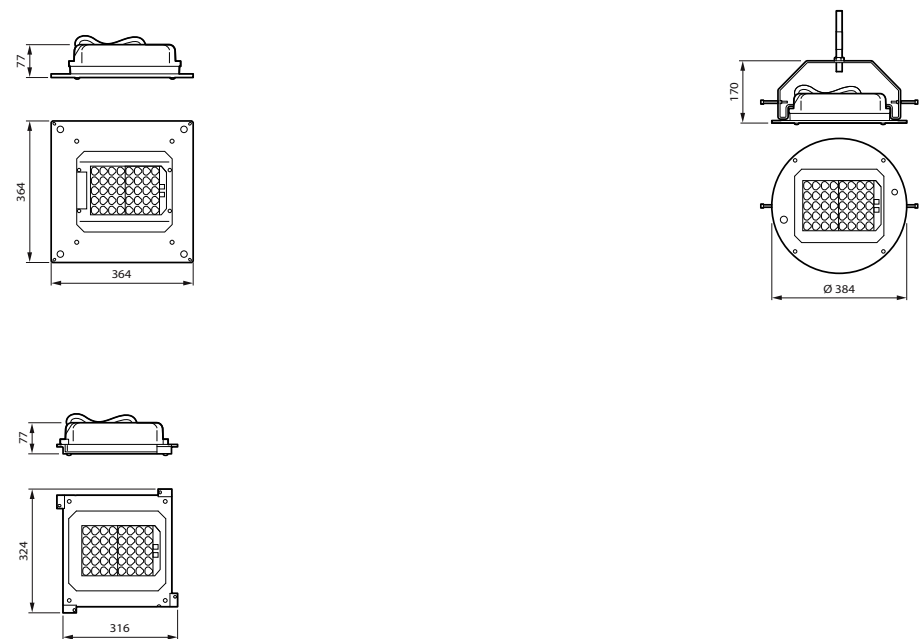
Jargeau LED retrofit kit with black mask

Dimensional drawing



Heritage LED retrofit kit

Dimensional drawing



Product details



Universal LED retrofit kit



Universal LED retrofit kit



Micenas 1 LED retrofit kit
passepartout



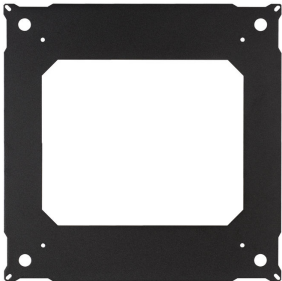
Universal LED retrofit kit

Heritage LED retrofit kit

Product details



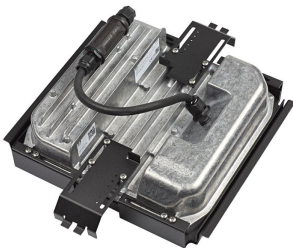
Universal LED retrofit kit



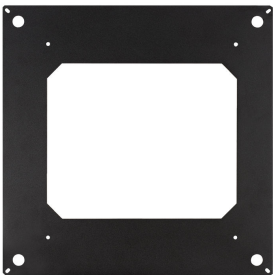
Jargeau LED retrofit kit
passepartout



Universal LED retrofit kit



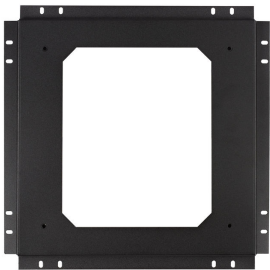
Universal LED retrofit kit



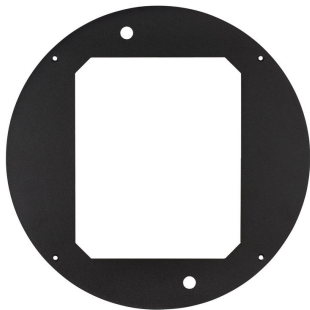
Villa LED retrofit kit passepartout



Universal LED retrofit kit



Micenas 2 LED retrofit kit
passepartout



Round LED retrofit kit
passepartout

Heritage LED retrofit kit

General Information

CE mark	Yes
Driver included	Yes
Flammability mark	-
Lamp family code	LED50
Light source replaceable	Yes
Number of gear units	1 unit

Light Technical

Optical cover type	Flat glass
Standard tilt angle side entry	-
Standard tilt angle posttop	-
Upward light output ratio	0.01

Controls and Dimming

Dimmable	No
----------	----

Mechanical and Housing

Housing Color	Black
---------------	-------

Approval and Application

Mech. impact protection code	IK09
Ingress protection code	IP66

Application Conditions

Maximum dim level	Not applicable
-------------------	----------------

General Information

Order Code	Full Product Name	Product family code
912300024912	EDP768 LED50/830 II MK-WH DM50 FG SRG10	EDP768
912300024909	EDP771 LED50/730 II MK-BK DS50 FG H07RN-	EDP771
912300024906	EDP768 LED50/830 II MK-BK DM50 FG SRG10	EDP768
912300024908	EDP770 LED50/830 II MK-BK DM50 FG SRG10	EDP770
912300024913	EDP769 LED50/722 II MK-WH DM50 FG SRG10	EDP769
912300024910	EDP772 LED50/830 II MK-BK DM50 FG H07RN-	EDP772
912300024914	EDP772 LED50/727 II MK-BK DM50 FG SRG10	EDP772
912300024911	EDP773 LED50/830 II MK-BK DM50 FG H07RN-	EDP773
912300024915	EDP773 LED50/830 II MK-BK DM50 FG SRG10	EDP773
912300024907	EDP769 LED50/722 II MK-BK DX10 FG SRG10	EDP769

Light Technical (1/2)

Order Code	Full Product Name	Luminaire light beam spread	Light source color	Correlated Color Temperature (Nom)	Color rendering index (CRI)
912300024912	EDP768 LED50/830 II MK-WH DM50 FG SRG10	30° - 5° x 153°	830 warm white	3000 K	≥80
912300024909	EDP771 LED50/730 II MK-BK DS50 FG H07RN-	152° x 155°	730 warm white	3000 K	≥70
912300024906	EDP768 LED50/830 II MK-BK DM50 FG SRG10	30° - 5° x 153°	830 warm white	3000 K	≥80
912300024908	EDP770 LED50/830 II MK-BK DM50 FG SRG10	30° - 5° x 153°	830 warm white	3000 K	≥80
912300024913	EDP769 LED50/722 II MK-WH DM50 FG SRG10	30° - 5° x 153°	722 warm white	2200 K	≥70

Order Code	Full Product Name	Luminaire light beam spread	Light source color	Correlated Color Temperature (Nom)	Color rendering index (CRI)
912300024910	EDP772 LED50/830 II MK-BK DM50 FG H07RN-	30° - 5° x 153°	830 warm white	3000 K	≥80
912300024914	EDP772 LED50/727 II MK-BK DM50 FG SRG10	30° - 5° x 153°	727 warm white	2700 K	≥70
912300024911	EDP773 LED50/830 II MK-BK DM50 FG H07RN-	30° - 5° x 153°	830 warm white	3000 K	≥80
912300024915	EDP773 LED50/830 II MK-BK DM50 FG SRG10	30° - 5° x 153°	830 warm white	3000 K	≥80
912300024907	EDP769 LED50/722 II MK-BK DX10 FG SRG10	20° - 4° x 150°	722 warm white	2200 K	≥70

Heritage LED retrofit kit

Light Technical (2/2)

Order Code	Full Product Name	Luminous Flux	Optic type outdoor
912300024912	EDP768 LED50/830 II MK-WH DM50 FG SRG10	3,700 lm	Distribution medium 50
912300024909	EDP771 LED50/730 II MK-BK DS50 FG H07RN-	3,400 lm	Distribution symmetrical 50
912300024906	EDP768 LED50/830 II MK-BK DM50 FG SRG10	3,500 lm	Distribution medium 50
912300024908	EDP770 LED50/830 II MK-BK DM50 FG SRG10	3,500 lm	Distribution medium 50
912300024913	EDP769 LED50/722 II MK-WH DM50 FG SRG10	3,450 lm	Distribution medium 50

Order Code	Full Product Name	Luminous Flux	Optic type outdoor
912300024910	EDP772 LED50/830 II MK-BK DM50 FG H07RN-	3,850 lm	Distribution medium 50
912300024914	EDP772 LED50/727 II MK-BK DM50 FG SRG10	3,850 lm	Distribution medium 50
912300024911	EDP773 LED50/830 II MK-BK DM50 FG H07RN-	3,350 lm	Distribution medium 50
912300024915	EDP773 LED50/830 II MK-BK DM50 FG SRG10	3,350 lm	Distribution medium 50
912300024907	EDP769 LED50/722 II MK-BK DX10 FG SRG10	3,200 lm	Distribution extra wide 10

Operating and Electrical

Order Code	Full Product Name	Power Consumption
912300024912	EDP768 LED50/830 II MK-WH DM50 FG SRG10	38 W
912300024909	EDP771 LED50/730 II MK-BK DS50 FG H07RN-	31.5 W
912300024906	EDP768 LED50/830 II MK-BK DM50 FG SRG10	38 W
912300024908	EDP770 LED50/830 II MK-BK DM50 FG SRG10	38 W
912300024913	EDP769 LED50/722 II MK-WH DM50 FG SRG10	41 W

Order Code	Full Product Name	Power Consumption
912300024910	EDP772 LED50/830 II MK-BK DM50 FG H07RN-	38.5 W
912300024914	EDP772 LED50/727 II MK-BK DM50 FG SRG10	35 W
912300024911	EDP773 LED50/830 II MK-BK DM50 FG H07RN-	38 W
912300024915	EDP773 LED50/830 II MK-BK DM50 FG SRG10	38 W
912300024907	EDP769 LED50/722 II MK-BK DX10 FG SRG10	41 W

Approval and Application

Order Code	Full Product Name	Surge Protection (Common/ Differential)
912300024912	EDP768 LED50/830 II MK-WH DM50 FG SRG10	Surge protection level until 10 kV differential mode
912300024909	EDP771 LED50/730 II MK-BK DS50 FG H07RN-	Luminaire surge protection level until 6 kV differential mode and 8 kV common mode
912300024906	EDP768 LED50/830 II MK-BK DM50 FG SRG10	Surge protection level until 10 kV differential mode
912300024908	EDP770 LED50/830 II MK-BK DM50 FG SRG10	Surge protection level until 10 kV differential mode
912300024913	EDP769 LED50/722 II MK-WH DM50 FG SRG10	Surge protection level until 10 kV differential mode
912300024910	EDP772 LED50/830 II MK-BK DM50 FG H07RN-	Luminaire surge protection level until 6 kV differential mode and 8 kV common mode

Order Code	Full Product Name	Surge Protection (Common/ Differential)
912300024914	EDP772 LED50/727 II MK-BK DM50 FG SRG10	Surge protection level until 10 kV differential mode
912300024911	EDP773 LED50/830 II MK-BK DM50 FG H07RN-	Luminaire surge protection level until 6 kV differential mode and 8 kV common mode
912300024915	EDP773 LED50/830 II MK-BK DM50 FG SRG10	Surge protection level until 10 kV differential mode
912300024907	EDP769 LED50/722 II MK-BK DX10 FG SRG10	Surge protection level until 10 kV differential mode

Heritage LED retrofit kit

