



Philips UniFlood M gen2: A high power floodlight with true modularity

UniFlood M G2

Philips UniFlood M gen2 is a cost-effective, exterior-rated architectural LED floodlight that's designed for façade, landscape and outdoor flood lighting applications. The robust, modular, rectangular design features highly-efficient optics, making it ideal for illuminating everything from multi-storey façades and bridges to landmarks and monuments. This LED floodlight is available in white, monochromatic colors, RGB, RGBW and tunable white. It comes with six different spread lenses ranging from narrow spot to wide flood and has DMX512/RDM control option. A truly modular floodlight that gives architects and designers the freedom to explore a wide range of concepts and designs with no limitations.

Benefits

- Great design flexibility with individually tilting heads and controls
- Create the right lighting effect with six different spread lenses (narrow spot to wide flood)
- Easy to control with DMX512/RDM
- A robust choice that's IP66-rated for outdoor use

Features

- Standard: RGBW, RGB, 2700K, 3000K and 4000K
- Optional 5000K, monochromatic colors and tunable white
- Flexible lengths from 155 to 569 mm
- Adjustable tilting angles for each head and for the whole set
- Steel brackets

UniFlood M G2

Application

- Bridges, Monuments, Facades
- Parks and Plazas
- Landscape

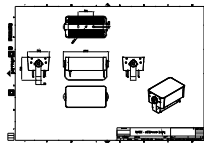
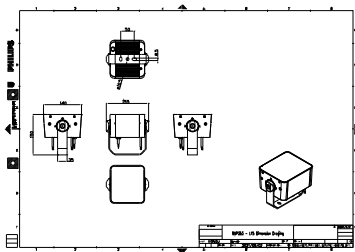
Warnings and Safety

- For outdoor use only.

Versions

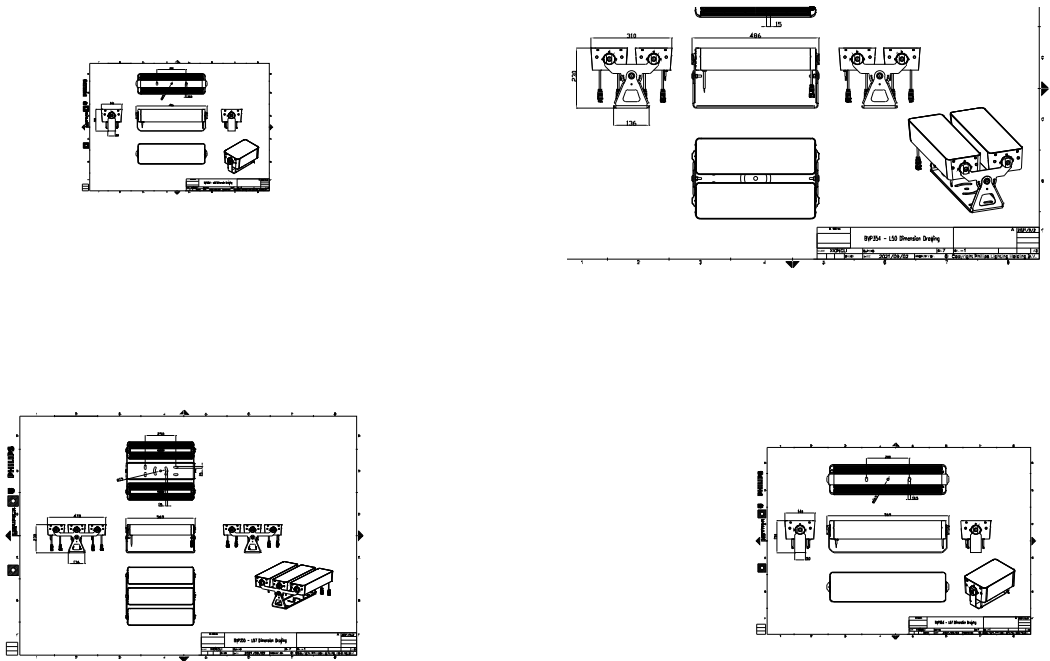


Dimensional drawing



UniFlood M G2

Dimensional drawing



General Information

CE mark	CE mark
Driver included	Yes
Flammability mark	For mounting on normally flammable surfaces

Light Technical

Optical cover type	Clear glass
Color rendering index (CRI)	>80

Mechanical and Housing

Housing Color	Dark gray
---------------	-----------

Approval and Application

Mech. impact protection code	IK06
Ingress protection code	IP66

Light Technical

Order Code	Full Product Name	Light source color	Correlated Color Temperature (Nom)	Luminous Flux
911401746943	BVP353 32LED RGBNW 220V L30 10 DMX	RGBW	-	2,985 lm
911401749373	BVP354 120LED RGBNW 220V L50 45 DMX	RGBW	-	11,750 lm
911401748573	BVP353 72LED 27K 220V L57 45	827 warm white	2700 K	11,950 lm
911401745603	BVP353 12LED 27K 220V L15 30	827 warm white	2700 K	1,915 lm
911401748293	BVP353 60LED RGBNW 220V L50 45 DMX	RGBW	-	6,575 lm
911401749953	BVP355 216LED 27K 220V L57 30 DMX	827 warm white	2700 K	35,380 lm

Operating and Electrical

Order Code	Full Product Name	Power Consumption
911401746943	BVP353 32LED RGBNW 220V L30 10 DMX	60 W
911401749373	BVP354 120LED RGBNW 220V L50 45 DMX	240 W
911401748573	BVP353 72LED 27K 220V L57 45	150 W

Order Code	Full Product Name	Power Consumption
911401745603	BVP353 12LED 27K 220V L15 30	24 W
911401748293	BVP353 60LED RGBNW 220V L50 45 DMX	120 W
911401749953	BVP355 216LED 27K 220V L57 30 DMX	450 W

Controls and Dimming

UniFlood M G2

Order Code	Full Product Name	Dimmable
911401746943	BVP353 32LED RGBNW 220V L30 10 DMX	Yes
911401749373	BVP354 120LED RGBNW 220V L50 45 DMX	Yes
911401748573	BVP353 72LED 27K 220V L57 45	No

Order Code	Full Product Name	Dimmable
911401745603	BVP353 12LED 27K 220V L15 30	No
911401748293	BVP353 60LED RGBNW 220V L50 45 DMX	Yes
911401749953	BVP355 216LED 27K 220V L57 30 DMX	Yes

