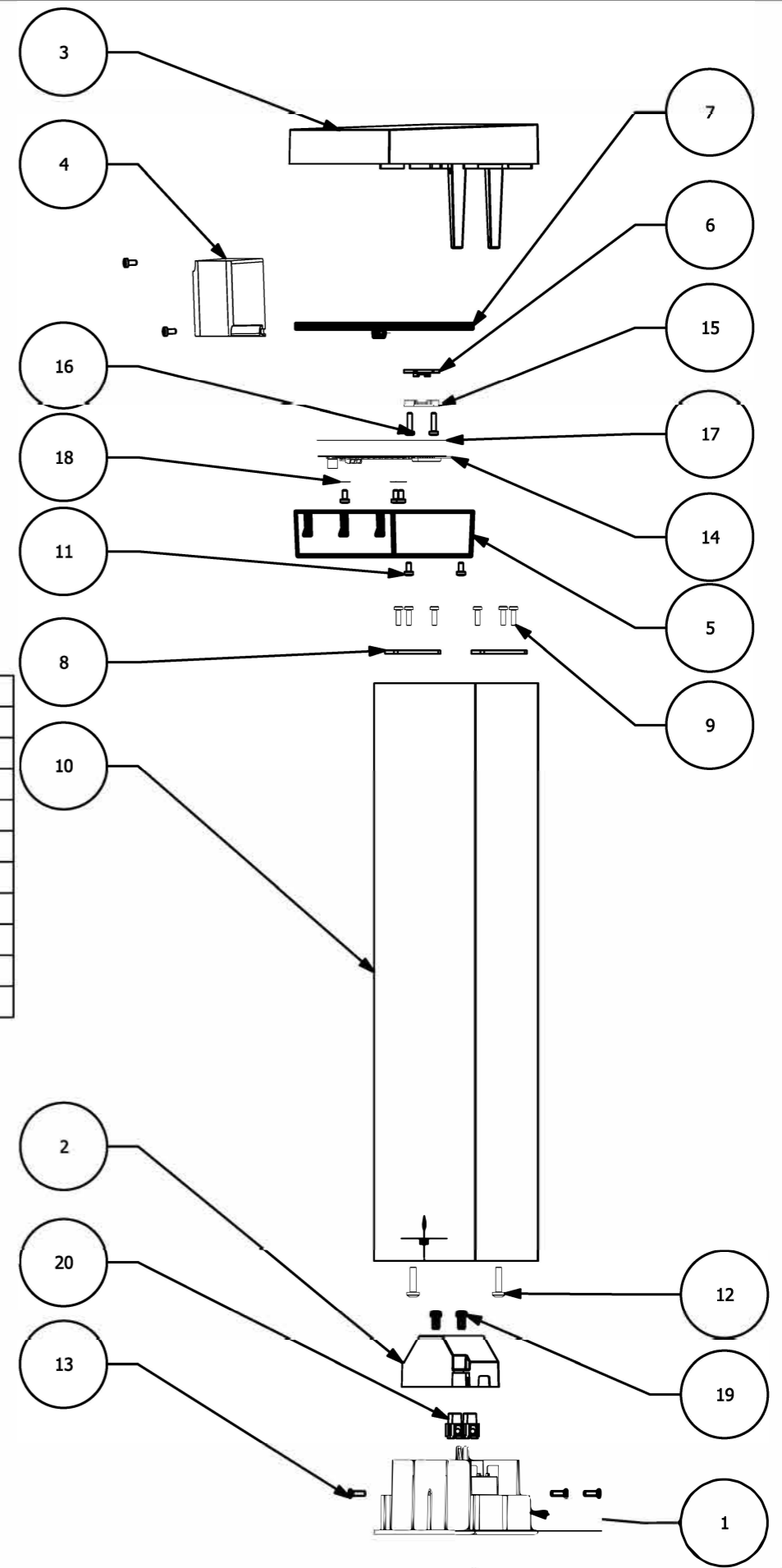


PHILIPS hue

Warnings

Always make sure the luminaire is detached from the mains socket
 Always make sure the DC cable is detached from the power supply
 Staring at the operating light source may cause eye injury



#	Disassemble/dismantle steps	Tools needed
a	Unscrew 3 screws [13] and take out entire subassembly [1]+[2]+[19]+[20] from profile [2]	CROSSHEAD SCREWDRIVER PH
b	Unscrew 2 screws [19] and remove cover [2]	TORXHEAD SCREW DRIVER T10
c	Take out terminal block [20] from cover [2] and remove wires of the control gear - psu [4] by unscrewing	FLATHEAD SCREWDRIVER
d	Unscrew 2 screws [12] and remove profile [10] from base [3]	TORXHEAD SCREW DRIVER T20
e	Unscrew 6 screws [9] and remove 2 plates [8] from profile [10]	TORXHEAD SCREW DRIVER T10
f	Unscrew 2 screws [11] and remove diffuser [5] and gasket [7] from base [3]	TORXHEAD SCREW DRIVER T10
g	Unplug wires of control gear-psu [4] from light source-led module [14]	WAGO TOOL #2060
h	Unscrew 2 screws [16] and remove 2 pull reliefs [6]+[15]	TORXHEAD SCREW DRIVER T10
i	Unscrew 2 screws [11] and remove control gear-psu [4] from base [3]	TORXHEAD SCREW DRIVER T10
j	Unscrew 3 screws [11] and remove light source-led module [14], gasket [7] and washers [18] from base [3]	TORXHEAD SCREW DRIVER T10

#	COMPONENT	QTY
1	BASE	1
2	COVER	1
3	BASE	1
4	CONTROL GEAR - PSU	1
5	DIFFUSER	1
6	PULL RELIEF	1
7	GASKET	1
8	PLATE	2
9	SCREW	6
10	PROFILE	1
11	SCREW	7
12	SCREW	2
13	SCREW	3
14	LIGHT SOURCE - LED MODULE	1
15	PULL RELIEF	1
16	SCREW	2
17	INSULATION	1
18	WASHER	3
19	SCREW	2
20	TERMINAL BLOCK	1

SKU	Color	Country
915005841601	black	

STATUS	DESCRIPTION	DESIGN ID	01	2021-06-30
Nyro Hue WACA pedestal black 1x13.5W 24V,Disassembly instruction		DOC 12NC		
NAME	Pa Kul	LOCAL PART ID	SH. 1	SH. 511
CHECKED		DATE	2021-06-30	A3-L
CONFIDENTIAL, PROPERTY OF: © 2021 Signify Holding				