

DESCRIPTION

The iO LED Line .75™ luminaire from Eaton Lighting Solutions enables functional luminous intensities in “tight” architectural locations such as niches and coves. The fixture is .75” x .75” in cross-section and is UL listed for dry locations only. Line .75™ is a low voltage luminaire in nominal lengths at 6” increments up to 72” in length. Engineered optical distributions control the beam along the perpendicular axis in 10°, 25° and 55° options. An asymmetric option is also available with a specific housing in a clear or frosted lens.

SPECIFICATION FEATURES

Construction

Extruded anodized aluminum housing coupled with a patented acrylic optical assembly and molded composite end caps.

Electrical

All fixtures supplied with 48”, 22 AWG, 300 volt-rated power cords on both ends of the fixture. Wire feeds are field configurable in multiple directions to accommodate unique mounting locations. Secondary end caps are included to complete a finished appearance. End of run feed wires should be clipped and capped. Projected average rated life is 50,000 hours at 70% of lamp lumen output.

LED Optics

The customized acrylic optics used in Line .75™ offer very high

transmissivity, UV stability and excellent longevity. All products have an 80+ CRI. White light variance between LEDs is equal to or better than 3-step MacAdam binning. Optics are highly engineered 10°, 25° and 55° optical distribution options as well as asymmetric options.

Mounting

Three mounting bracket options include: surface, side surface and field adjustable. Bracket material is composed of stainless steel for ease of installation and removal as required. Remote drivers are supplied with NEMA 1 enclosures for power connection. For detailed information regarding daisy chain limitations, remote driver distance limitations, and dimming options please consult page 3. To ensure

proper performance, architectural details should allow for ventilation and air flow around the fixture. Ambient temperature surrounding the fixture shall not exceed 122°F.

Finish

Anodized aluminum finish is standard. Custom anodized finishes available upon request.

Compliance

UL listed for dry Location. RoHS compliant. Tested per IESNA LM79. LEDs comply with LM80 standards.

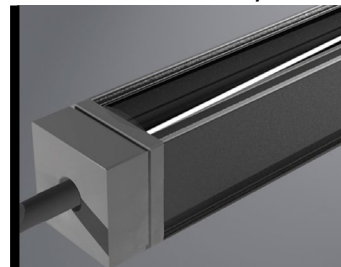
Environment

Line .75™ is design for dry locations. It is not rated for wet or submersible applications.

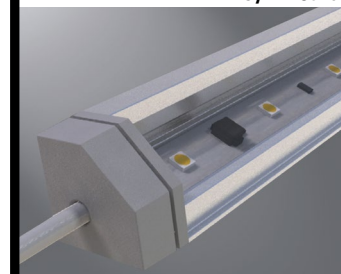
Warranty

Standard 5 year limited warranty on all parts.

Symmetric



Asymmetric



LINE .75

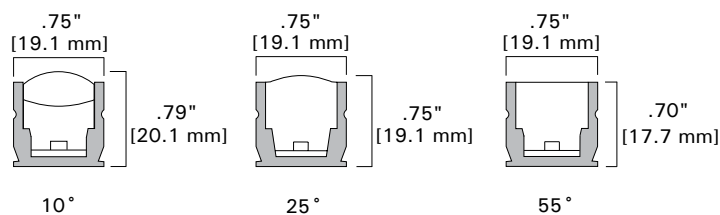
LED

INTERIOR
LINEAR ACCENT LUMINAIRE
Symmetric / Asymmetric

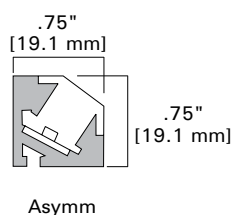
cULus Dry - 1598
LM79/LM80 Compliant
ROHS Compliant



DIMENSIONS SYMMETRIC



DIMENSIONS ASYMMETRIC



ORDERING INFORMATION

SAMPLE NUMBER 0.03-5W-830-55-ID-HCD-UNV-AN-AM-E-15F6

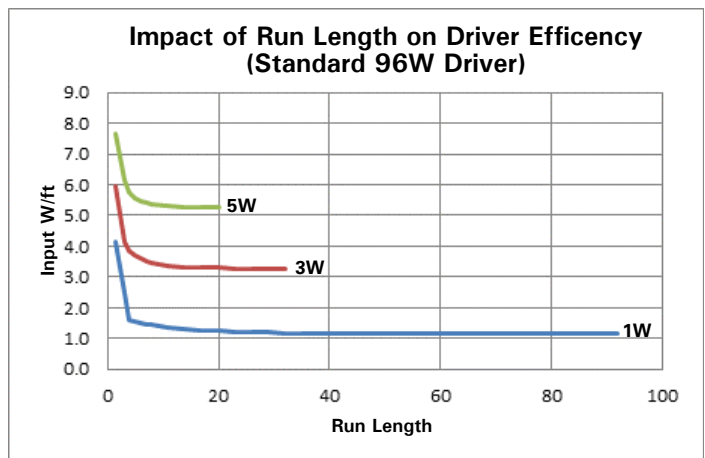
Series	Light Level ¹ (Power) (nominal for 12" section)	LED CRI & CCT	Optical Distribution	Environment	Driver ²
0.03 = iO Line .75	1W = Standard Output, 99 lumens/ft (1.1W/ft) 3W = High Output, 237 lumens/ft (3.3W/ft) 5W = Very High Output, 359 lumens/ft (5.3W/ft)	827 = 80+ CRI, 2700K CCT 830 = 80+ CRI, 3000K CCT 835 = 80+ CRI, 3500K CCT 840 = 80+ CRI, 4000K CCT	10 = 10 degree 25 = 25 degree 55 = 55 degree 90 = Asymmetric fixture 91 = Asymmetric w/ opal lens	ID = Indoor, NEMA 1 enclosure included	HCD = 96 W, 0-10V (100% - 0% dimming)

Voltage	Housing Color ³	Mounting	Driver Location ⁴	Length ^{2,5} (Actual in./mm) (Specify Run or Individual fixture)
UNV = 120V-277V	AN = Standard anodized aluminum	SM = Surface mount WM = Wall mount AM = Adjustable mount	E = End driver location <i>(requires more drivers)</i> C = Central driver location <i>(minimizes drivers required)</i>	F = specify nominal run length in feet and inches (only available in 6" increments) (e.g. 15F6 = 15' 6" run) Or select individual fixtures: 0F6 = 6" (6.53"/165.86mm) 3F6 = 42" (40.53"/1029.46mm) 1F0 = 12" (12.22"/310.38mm) 4F0 = 48" (46.22"/1173.98mm) 1F6 = 18" (17.97"/456.43mm) 4F6 = 54" (51.97"/1320.03mm) 2F0 = 24" (23.53"/597.66mm) 5F0 = 60" (57.53"/1461.26mm) 2F6 = 30" (29.22"/742.18mm) 5F6 = 66" (63.22"/1605.78mm) 3F0 = 36" (34.97"/888.23mm) 6F0 = 72" (68.97"/1751.83mm)

See page 4 for Technical Notes.

LIGHT OUTPUT TABLE

Input, W (Includes driver losses) for max run length	Delivered Lumens/ft. per Optical Distribution					
	CCT	10°	25°	55°	90 Clear Asym	91 Opal Asym
1W = 1.1 W/ft	2700	73.04	87.12	62.48	83.6	39.6
	3000	78.02	93.06	66.74	89.3	42.3
	3500	81.34	97.02	69.58	93.1	44.1
	4000	83	99	71	95	45
3W = 3.3 W/ft	2700	176	208.6	149.6	201.5	95.04
	3000	188	222.8	159.8	215.3	101.5
	3500	196	232.3	166.6	224.4	105.8
	4000	200	237	170	229	108
5W = 5.3 W/ft	2700	266.6	315.9	226.2	304.5	143.4
	3000	284.8	337.5	241.6	325.2	153.2
	3500	296.9	351.8	251.9	339.1	159.7
	4000	303	359	257	346	163

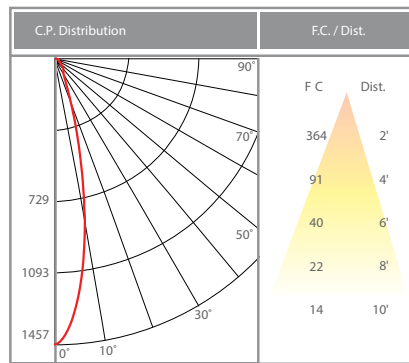


LIGHT OUTPUT CONVERSION TABLE

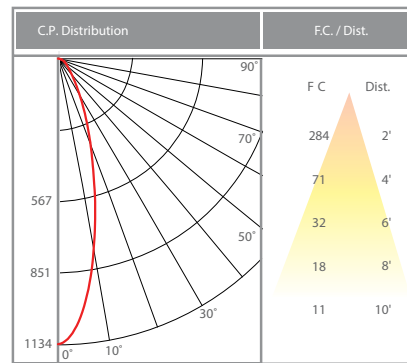
CCT	1W	3W	5W
2700K	0.242	0.583	0.882
3000K	0.259	0.623	0.943
3500K	0.270	0.648	0.981
4000K	0.275	0.661	1.000

LIGHT OUTPUT / DISTRIBUTION SYMMETRIC

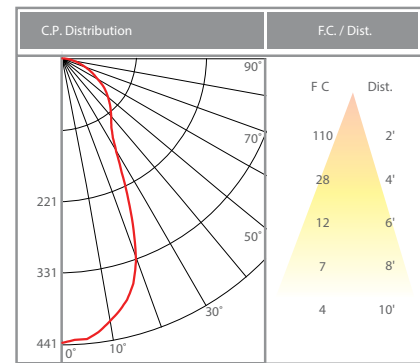
4000K, 5W, 36° 10 Degree



4000K, 5W, 36° 25 Degree

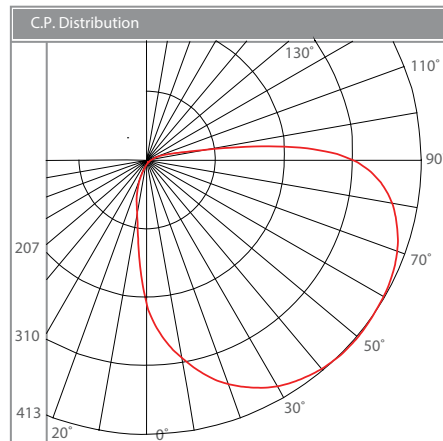


4000K, 5W, 36° 55 Degree

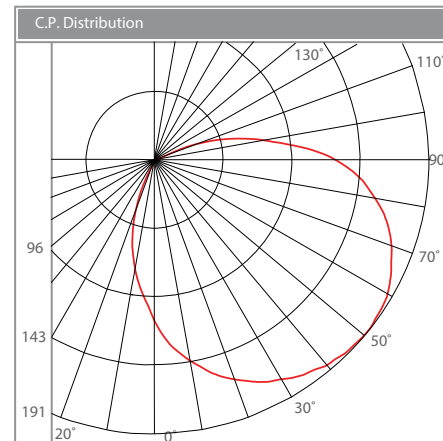


LIGHT OUTPUT / DISTRIBUTION ASYMMETRIC

4000K, 5W, 36° Asymmetric (90)



4000K, 5W, 36° Asymmetric Opal (91)



See page 4 for Technical Notes.

INSTALLATION DETAILS**Max Run Length Depends on Driver Location (See diagram below)**

96 W Driver	E = End of Driver Location	C = Central driver location
line .75 - 1W	45' (13.72 m)	90' (27.43 m)
line .75 - 3W	16' (4.88 m)	32' (9.75 m)
line .75 - 5W	10' (3.05 m)	20' (6.10 m)

Temperature, Ambient temperature surrounding the fixture shall not exceed 122° F (50°C)

Max Allowable Remote Driver Distance Wire Diameter

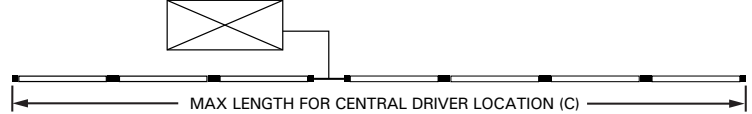
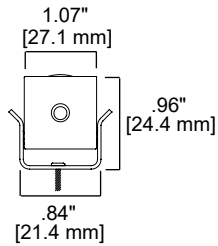
Wire Diameter	Max Allowable Remote Driver Distance
12 AWG	71'-0" (21.6m)
14 AWG	46'-0" (14.0m)
18 AWG	18'-0" (5.5m)

Driver Location Diagram**End Driver Location (E):**

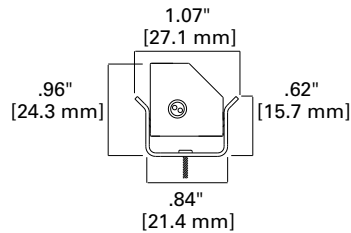
24V 96W DRIVER

**Central Driver Location (C):**

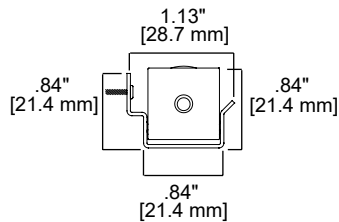
24V 96W DRIVER

**MOUNTING OPTIONS AND BRACKETS****Symmetric and Asymmetric Surface Mount (S)**

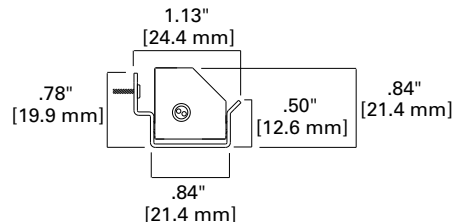
S = Surface Mount - Symmetric



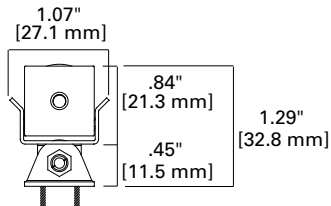
S = Surface Mount - Asymmetric

Symmetric and Asymmetric Wall Mount (W)

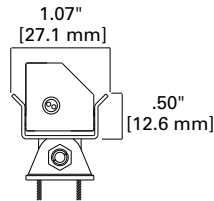
W = Wall Mount - Symmetric



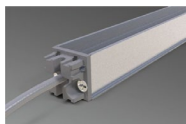
W = Wall Mount - Asymmetric

Symmetric and Asymmetric Field Adjustable Mount with Lockable Aiming (A)

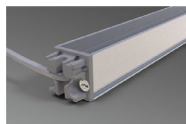
A = Adjustable Mount - Symmetric



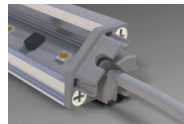
A = Adjustable Mount - Asymmetric

ELECTRICAL FEED CONFIGURATIONS**Field Configurable Electrical Feed (before adding secondary end cap)**

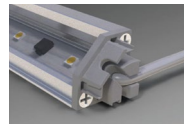
End Feed



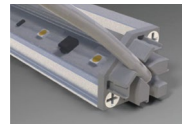
Right Side Feed



Right End Feed



Right Back Feed



Right Front Feed



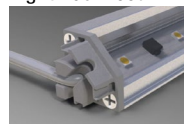
Left Side Feed



Top Feed



Left End Feed



Left Back Feed



Left Front Feed

Symmetric

Asymmetric

See page 4 for Technical Notes.

DRIVER DETAILS

Driver Part Number	Description
HCD	96W Driver (capable of 0-10V dimming down to 1% with included OTDIM module) and NEMA 1 Enclosure (for indoor use)

Note: See page 3 for driver run length limits

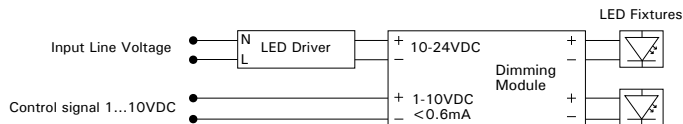
HCD DIMMING MODULE SPECIFICATIONS

Additional details available in the Accessories Spec Sheet section of the iO website

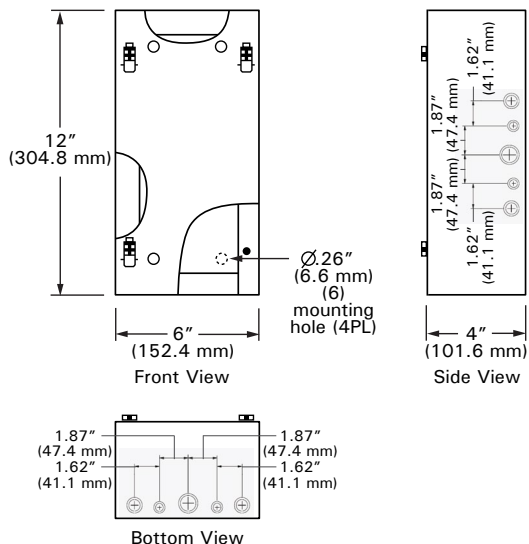
Key Dimming Features	
Utilizes pulse width modulation (PWM), to control LED performance	
Options available for analog or DMX protocols	
Dimming range: 0%-100%	
Short circuit, overload and overheating protection	
Dimming Module Specifications	
Location:	Dry
Input Voltage:	24v DC
Max Input Current:	5.3A
Control Voltage:	0-10v DC
Frequency:	135 Hz
Ambient Temp:	-20°C to +50°C
Weight:	.165 lbs
Power Consumption:	Up to 3W

Details on NEMA enclosure options available in the iO LED Accessories Spec Sheet section of the Eaton Lighting website

HCD DIMMING MODULE WIRING



NEMA 1 ENCLOSURE DIMENSIONS



TECHNICAL NOTES

1. Light Level delivered lumens provided for 4000K CCT, 25° optic based on IES photometry testing, see table on page 2 for all CCTs and optical distributions. See Eaton website for all IES test reports.
2. Drivers will be optimized if run length is specified; Discrete fixtures will include 1 driver per fixture.
3. Contact Eaton for custom color availability.
4. Required when specifying by run length. See Driver Location diagram on page 3.
5. Specified run lengths will be optimized with 6 ft. fixtures and completed with shorter fixtures to satisfy the run length without the total actual length (rather than total nominal length) going greater than the specified run length.