



# MasterConnect T8

14T8/48-840/IF21/MC IA 10/1

Introducing MasterConnect LED lamps - smart retrofit LED lamps that give you an easy and seamless way to upgrade to connected lighting. Simply set up with an intuitive app, MasterConnect LED lamps can be programmed to maximize energy savings, while providing wireless and automated light for your comfort and convenience. What's more, it is fully scalable and upgradable. If you want to enjoy further benefits such as remote control or management dashboard, you can simply keep the currently installed lamps and add a gateway to experience all the advantages of a cloud-based system. There's no better way to take lighting solutions to the next level.

## Product data

General Information	
Cap-Base	G13 [Medium Bi-Pin Fluorescent]
Nominal lifetime	70,000 hour(s)
Switching Cycle	50,000
Lighting Technology	LED
EU RoHS compliant	Yes
Light Technical	
Color Code	840 [CCT of 4000K]
Beam Angle (Nom)	160 degree(s)
Luminous Flux	2,100 lm
Color Designation	Cool White (CW)
Correlated Color Temperature (Nom)	4000 K
Luminous Efficacy (rated) (Nom)	150.00 lm/W
Color Consistency	<6
Color rendering index (CRI)	82
LLMF At End Of Nominal Lifetime (Nom)	70 %

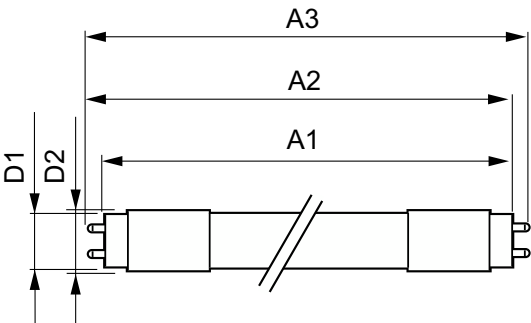
Operating and Electrical	
Line Frequency	28K to 100K Hz
Input Frequency	28K to 100K Hz
Power Consumption	14 W
Lamp Current (Max)	380 mA
Lamp Current (Min)	120 mA
Wattage Equivalent	32 W
Starting Time (Nom)	0.5 s
Warm-up time to 60% light	0.5 s
Power Factor (Fraction)	0.9
Voltage (Nom)	100-380 V
UL Type	UL Type A
Temperature	
Ambient temperature range	-4 °F to 113 °F
T-Case Maximum (Nom)	104 °F

MasterConnect T8

Controls and Dimming	
Dimmable	Wireless Dim
Mechanical and Housing	
Bulb Finish	Frosted
Bulb Material	Plastic
Product Length	47-1/4 inch
Bulb Shape	T8
Approval and Application	
Energy Saving Product	Yes
Approval Marks	RoHS compliance UL certificate DLC compliance
Energy Consumption kWh/1000 h	- kWh

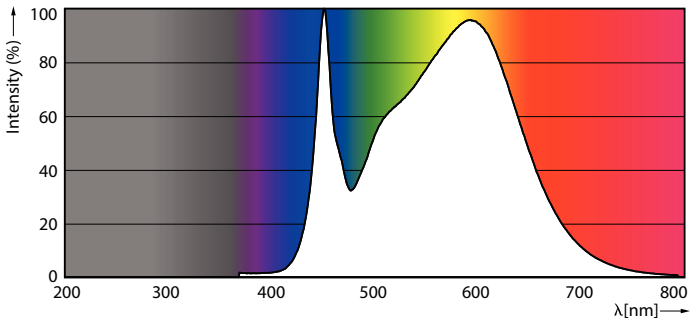
Application Conditions	
can it be used in closed luminaires	Yes
Product Data	
Order product name	14T8/48-840/IF21/MC IA 10/1
Full product name	14T8/48-840/IF21/MC IA 10/1
Order code	547307
Material Nr. (12NC)	929002051904
Numerator - Quantity Per Pack	1
EAN/UPC - Product/Case	046677547301
Numerator - Packs per outer box	10
EAN/UPC - Case	50046677547306

Dimensional drawing

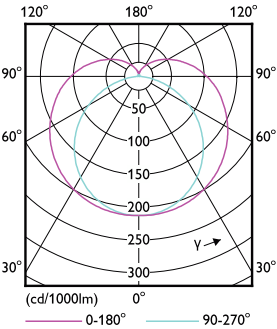


Product	D1	D2	A1	A2	A3
14T8/48-840/IF21/MC IA 10/1	1-1/16 inch	1-1/16 inch	47-3/16 inch	47-1/2 inch	47-3/4 inch

Photometric data

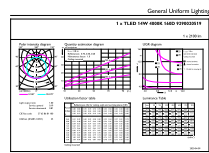


Spectral Power Distribution Colour - 14T8/48-840/IF21/MC IA 10/1



Light Distribution Diagram - 14T8/48-840/IF21/MC IA 10/1

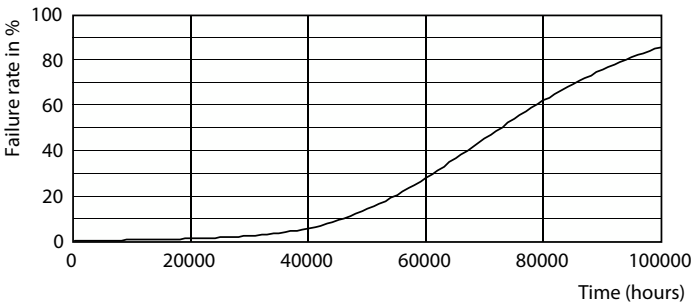
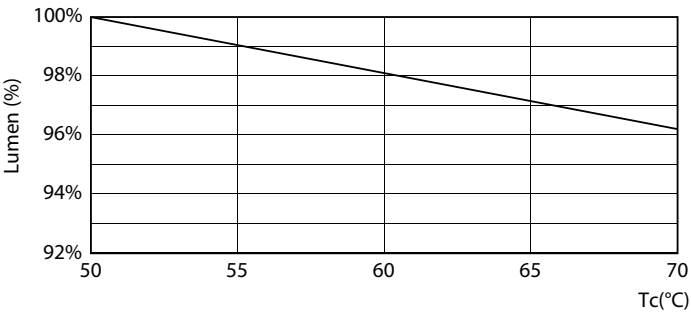
Photometric data



Technical Parameters 43 Page Lighting ETC Page 117

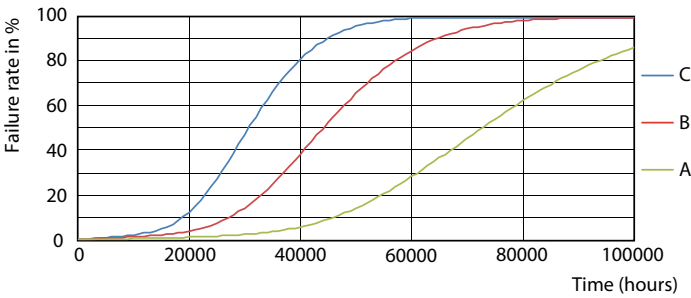
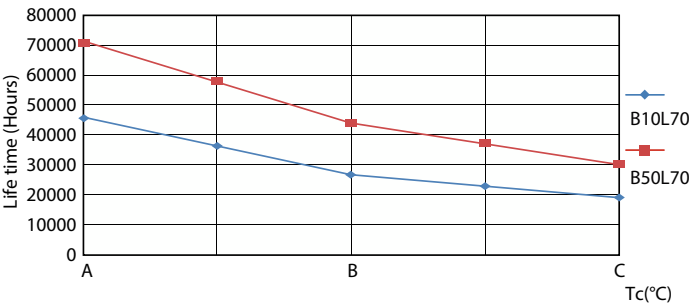
General uniform lighting - 14T8/48-840/IF21/MC IA 10/1

Lifetime



Lumen Maintenance Diagram - 14T8/48-840/IF21/MC IA 10/1

Life Expectancy Diagram - 14T8/48-840/IF21/MC IA 10/1

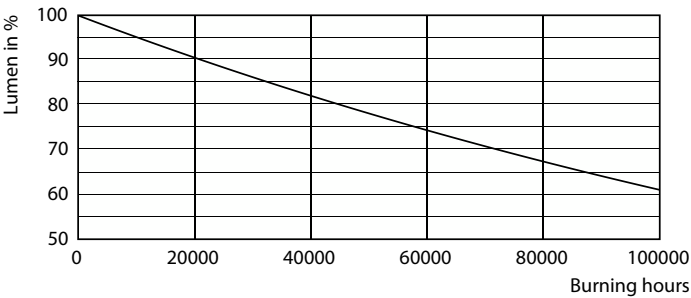


Life Expectancy Diagram - 14T8/48-840/IF21/MC IA 10/1

Life Expectancy Diagram - 14T8/48-840/IF21/MC IA 10/1

MasterConnect T8

Lifetime



Lumen Maintenance Diagram - 14T8/48-840/IF21/MC IA 10/1

