



MasterConnect T8

14T8/48-850/IF21/MC IA 10/1

Introducing MasterConnect LED lamps - smart retrofit LED lamps that give you an easy and seamless way to upgrade to connected lighting. Simply set up with an intuitive app, MasterConnect LED lamps can be programmed to maximize energy savings, while providing wireless and automated light for your comfort and convenience. What's more, it is fully scalable and upgradable. If you want to enjoy further benefits such as remote control or management dashboard, you can simply keep the currently installed lamps and add a gateway to experience all the advantages of a cloud-based system. There's no better way to take lighting solutions to the next level.

Product data

| General Information | |
|---------------------------------------|---------------------------------|
| Cap-Base | G13 [Medium Bi-Pin Fluorescent] |
| Nominal lifetime | 70,000 hour(s) |
| Switching Cycle | 50,000 |
| Lighting Technology | LED |
| EU RoHS compliant | Yes |
| Light Technical | |
| Color Code | 850 [CCT of 5000K] |
| Beam Angle (Nom) | 160 degree(s) |
| Luminous Flux | 2,100 lm |
| Color Designation | Daylight |
| Correlated Color Temperature (Nom) | 5000 K |
| Luminous Efficacy (rated) (Nom) | 150.00 lm/W |
| Color Consistency | <5 |
| Color rendering index (CRI) | 82 |
| LLMF At End Of Nominal Lifetime (Nom) | 70 % |

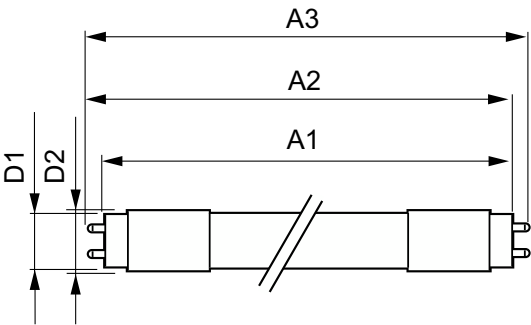
| Operating and Electrical | |
|---------------------------|-----------------|
| Line Frequency | 28K to 100K Hz |
| Input Frequency | 28K to 100K Hz |
| Power Consumption | 14 W |
| Lamp Current (Max) | 380 mA |
| Lamp Current (Min) | 120 mA |
| Wattage Equivalent | 32 W |
| Starting Time (Nom) | 0.5 s |
| Warm-up time to 60% light | 0.5 s |
| Power Factor (Fraction) | 0.9 |
| Voltage (Nom) | 100-380 V |
| UL Type | UL Type A |
| Temperature | |
| Ambient temperature range | -4 °F to 113 °F |
| T-Case Maximum (Nom) | 104 °F |

MasterConnect T8

| | |
|-------------------------------|---|
| Controls and Dimming | |
| Dimmable | Wireless Dim |
| Mechanical and Housing | |
| Bulb Finish | Frosted |
| Bulb Material | Plastic |
| Product Length | 47-1/4 inch |
| Bulb Shape | T8 |
| Approval and Application | |
| Energy Saving Product | Yes |
| Approval Marks | RoHS compliance UL certificate DLC compliance |
| Energy Consumption kWh/1000 h | - kWh |

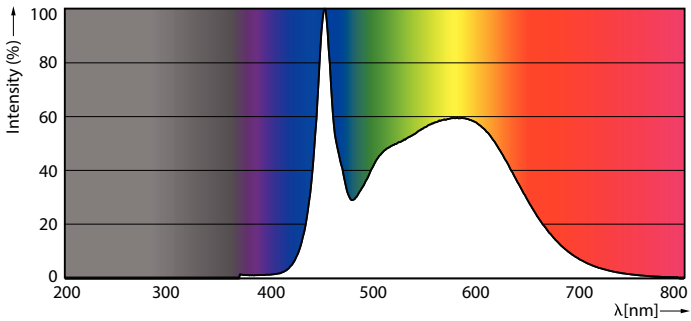
| | |
|-------------------------------------|-----------------------------|
| Application Conditions | |
| can it be used in closed luminaires | Yes |
| Product Data | |
| Order product name | 14T8/48-850/IF21/MC IA 10/1 |
| Full product name | 14T8/48-850/IF21/MC IA 10/1 |
| Order code | 547315 |
| Material Nr. (12NC) | 929002052004 |
| Numerator - Quantity Per Pack | 1 |
| EAN/UPC - Product/Case | 046677547318 |
| Numerator - Packs per outer box | 10 |
| EAN/UPC - Case | 50046677547313 |

Dimensional drawing

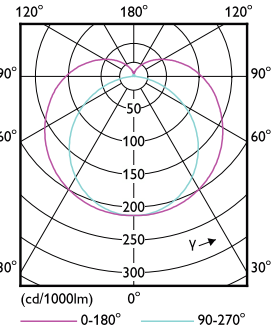


| Product | D1 | D2 | A1 | A2 | A3 |
|-----------------------------|-------------|-------------|--------------|-------------|-------------|
| 14T8/48-850/IF21/MC IA 10/1 | 1-1/16 inch | 1-1/16 inch | 47-3/16 inch | 47-1/2 inch | 47-3/4 inch |

Photometric data

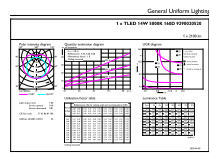


Spectral Power Distribution Colour - 14T8/48-850/IF21/MC IA 10/1



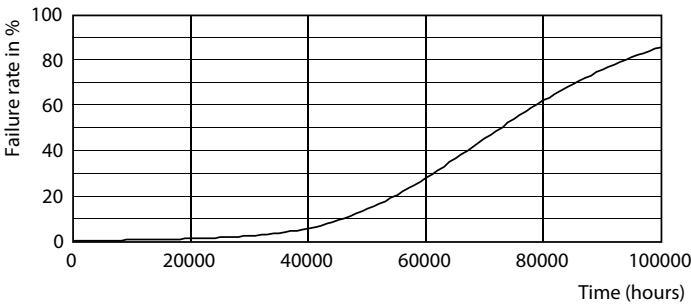
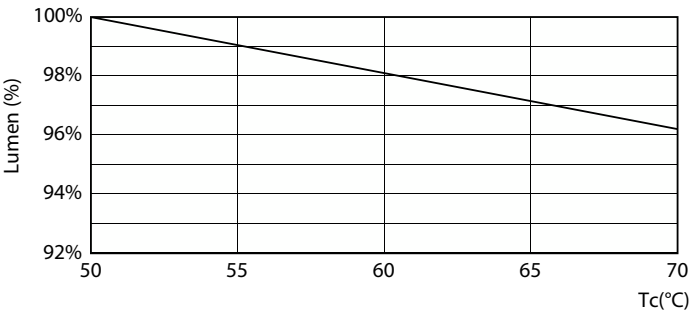
Light Distribution Diagram - 14T8/48-850/IF21/MC IA 10/1

Photometric data

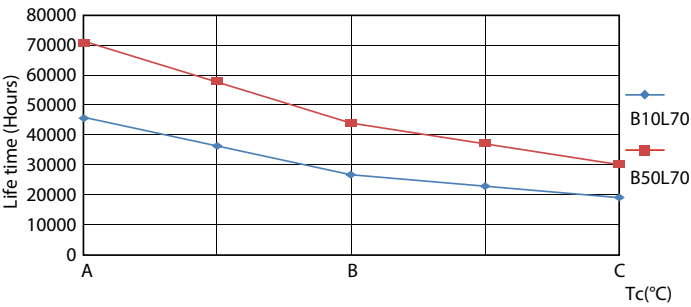


General uniform lighting - 14T8/48-850/IF21/MC IA 10/1

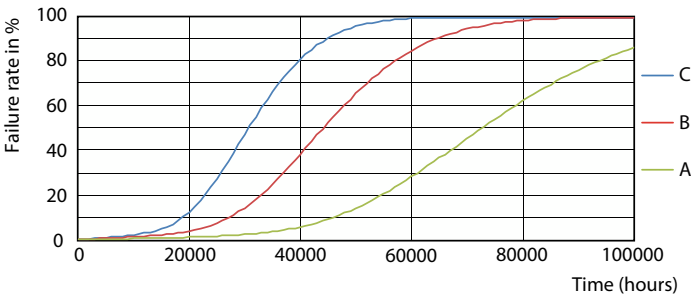
Lifetime



Lumen Maintenance Diagram - 14T8/48-850/IF21/MC IA 10/1



Life Expectancy Diagram - 14T8/48-850/IF21/MC IA 10/1

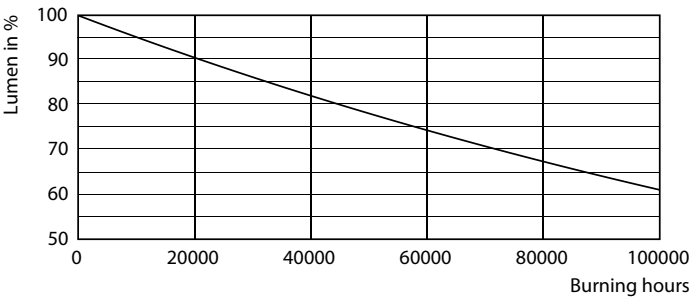


Life Expectancy Diagram - 14T8/48-850/IF21/MC IA 10/1

Life Expectancy Diagram - 14T8/48-850/IF21/MC IA 10/1

MasterConnect T8

Lifetime



Lumen Maintenance Diagram - 14T8/48-850/IF21/MC IA 10/1

