

# MasterConnect LEDtube EM/mains T8



## MasterConnect LEDtube IA 1500mm UO 25W865 T8

Introducing MasterConnect LEDtubes – smart retrofit LED T8 lamps that give you an easy and seamless way to upgrade to connected lighting. Simply set up with an intuitive app and MasterConnect LED tube lighting can be programmed to maximize energy savings, while providing wireless and automated light for your comfort and convenience. What's more, it is fully scalable and upgradable. If you want to enjoy additional benefits such as remote control or a management dashboard, you can simply keep the lamps you currently have installed and add a gateway to experience all the advantages of a cloud-based system. There's no better way to take lighting solutions to the next level.

### Product data

General Information			
Cap-Base	G13 [Medium Bi-Pin Fluorescent]	Correlated Color Temperature (Nom)	6500 K
Nominal lifetime	60,000 hour(s)	Luminous Efficacy (rated) (Nom)	148 lm/W
Switching Cycle	200,000	Color Consistency	<6
Lighting Technology	LED	Color rendering index (CRI)	83
Flux measurement reference	Sphere	LLMF At End Of Nominal Lifetime (Nom)	70 %
CE mark	Yes	Flickering value (PstLM) - Flickering value as per EN 61000-3-3	1
EU RoHS compliant	Yes	Stroboscopic effect visibility measure (SVM)	0.9
Light Technical		Photobiological safety according to EN 62471	RG0
Color Code	865 [CCT of 6500K]	Operating and Electrical	
Beam Angle (Nom)	160 degree(s)	Line Frequency	50 to 60 Hz
Luminous Flux	3,700 lm	Input Frequency	50 to 60 Hz
Color Designation	Cool Daylight	Power Consumption	25 W

MasterConnect LEDtube EM/mains T8

Lamp Current (Max)	117 mA
Lamp Current (Min)	108 mA
Starting Time (Nom)	0.5 s
Warm-up time to 60% light	0.5 s
Power Factor (Fraction)	0.9
Voltage (Nom)	220-240 V
LED alternative to fluorescent lamp power	58 W
Inrush current at mains	9
Max. lamp no. on MCB B type 10A - Mains	73
Max. lamp no. on MCB B type 10A – EM ballast without Comp. Cap.	73
Max. lamp no. on MCB B type 10A – EM ballast with Comp. Cap.	15
Max. lamp no. on MCB B type 16A - Mains	116
Max. lamp no. on MCB B type 16A – EM ballast without Comp. Cap.	116
Max. lamp no. on MCB B type 16A – EM ballast with Comp. Cap.	24
Ballast Compatibility	EM/Mains

Temperature

Ambient temperature range	-20 °C to 45 °C
T-Case Maximum (Nom)	65 °C

Controls and Dimming

Dimmable	Wireless Dim
----------	--------------

Mechanical and Housing

Product Length	1,500 mm
Bulb Shape	T8

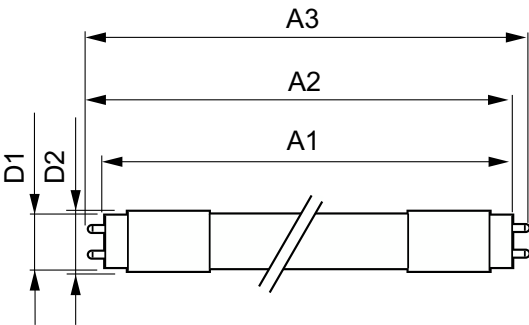
Approval and Application

Energy Efficiency Class	D
Energy Saving Product	Yes
Approval Marks	RoHS compliance TUV CE marking KEMA Keur certificate
Energy Consumption kWh/1000 h	25 kWh
EPREL Registration Number	406203

Product Data

Order product name	MC LEDtube IA 1500mm UO 25W865 T8
Full product name	MasterConnect LEDtube IA 1500mm UO 25W865 T8
Full product code	871869966978200
Order code	66978200
Material Nr. (12NC)	929002210902
Numerator - Quantity Per Pack	1
EAN/UPC - Product/Case	8718699669782
Numerator - Packs per outer box	10
EAN/UPC - Case	8718699669799

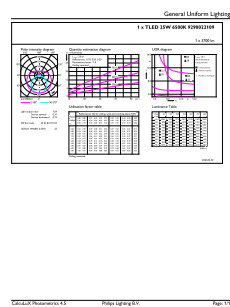
Dimensional drawing



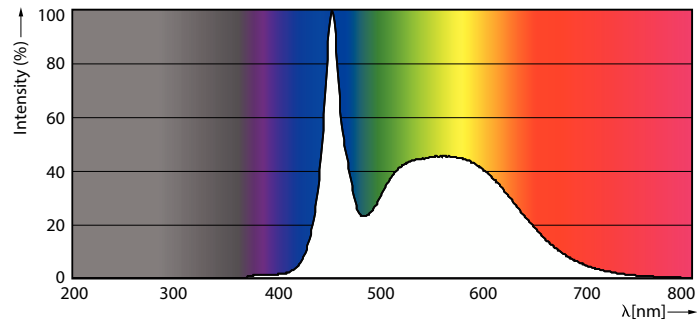
Product	D1	D2	A1	A2	A3
MC LEDtube IA 1500mm UO 25W865 T8	25.8 mm	28 mm	1,498.7 mm	1,505.8 mm	1,512.9 mm

# MasterConnect LEDtube EM/mains T8

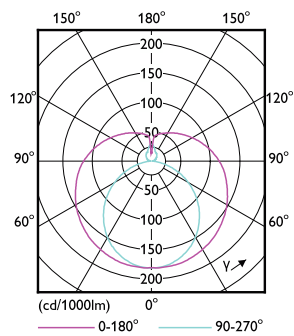
## Photometric data



General uniform lighting - MC LEDtube IA 1500mm UO 25W865 T8

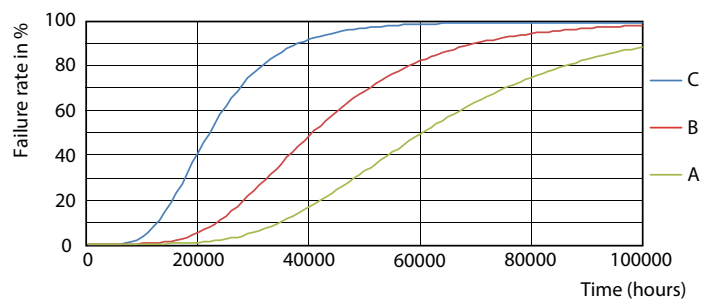


Spectral Power Distribution Colour - MC LEDtube IA 1500mm UO 25W865 T8

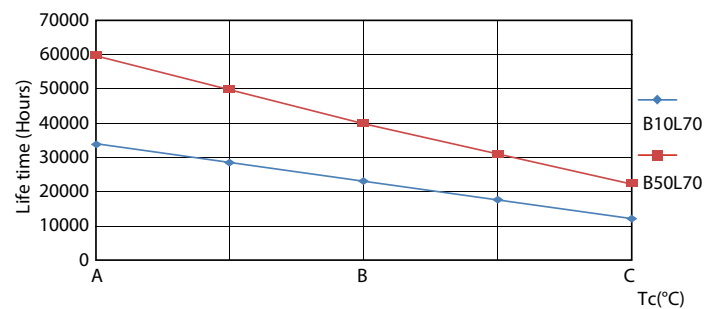


Light Distribution Diagram - MC LEDtube IA 1500mm UO 25W865 T8

## Lifetime



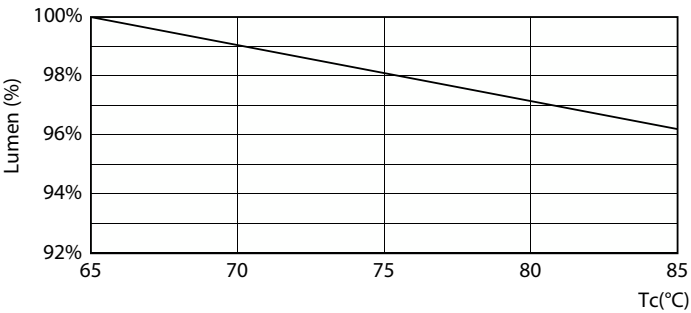
Life Expectancy Diagram - MC LEDtube IA 1500mm UO 25W865 T8



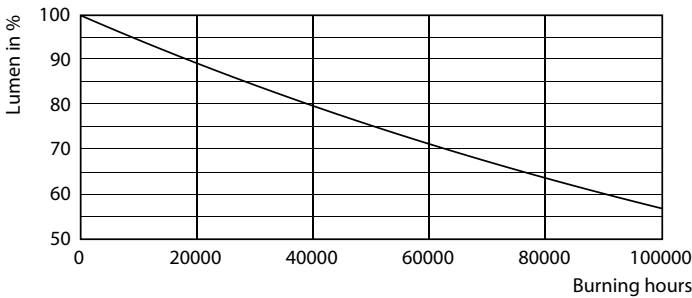
Life Expectancy Diagram - MC LEDtube IA 1500mm UO 25W865 T8

MasterConnect LEDtube EM/mains T8

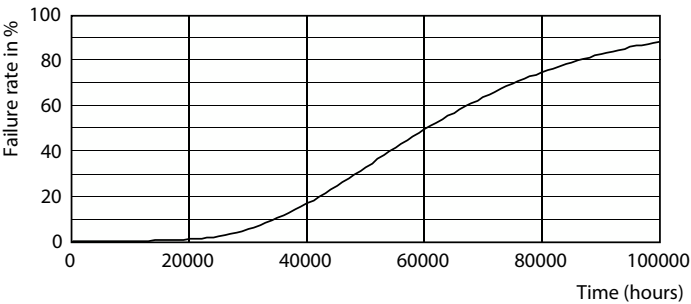
Lifetime



Lumen Maintenance Diagram - MC LEDtube IA 1500mm UO 25W865 T8



Lumen Maintenance Diagram - MC LEDtube IA 1500mm UO 25W865 T8



Life Expectancy Diagram - MC LEDtube IA 1500mm UO 25W865 T8

