



T8

10.5T8/MAS/48-850/MF16/P 10/1

Our TLEDs are available in InstantFit (Type A / Type C) or MainsFit (Ballast bypass / Type B) versions. The InstantFit lamps work on a broad variety of ballasts and LED drivers. Only InstantFit has over 15,000 lamp & ballast combinations delivering even light output, energy savings and a long lifetime. Our MainsFit products feature a double-ended design, simplifying installation while a proprietary safety circuit minimizes a shock risk. Lamp sizes range from 2-foot to 8-foot and U-bend with a variety of lumen outputs.

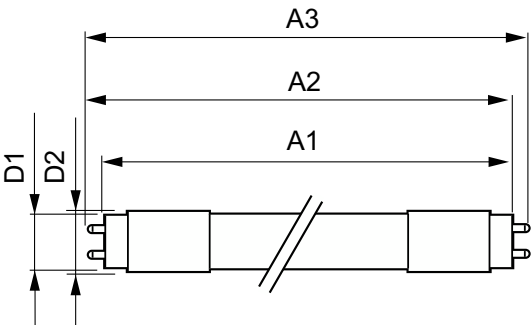
Product data

General Information		Input Frequency	
Cap-Base	G13 [Medium Bi-Pin Fluorescent]	Power Consumption	10.5 W
Nominal lifetime	70,000 hour(s)	Lamp Current (Max)	100 mA
Switching Cycle	50,000	Lamp Current (Min)	43 mA
Lighting Technology	LED	Wattage Equivalent	32 W
EU RoHS compliant	Yes	Starting Time (Nom)	0.5 s
Light Technical		Warm-up time to 60% light	0.5 s
Color Code	850 [CCT of 5000K]	Power Factor (Fraction)	0.9
Beam Angle (Nom)	180 degree(s)	Voltage (Nom)	120-277 V
Luminous Flux	1,650 lm	UL Type	Type B - bypass the ballast
Color Designation	Daylight	Temperature	
Correlated Color Temperature (Nom)	5000 K	Ambient temperature range	-20 °C to 45 °C
Luminous Efficacy (rated) (Nom)	157.00 lm/W	T-Case Maximum (Nom)	70 °C
Color Consistency	<5	Controls and Dimming	
Color rendering index (CRI)	80	Dimmable	Limited
LLMF At End Of Nominal Lifetime (Nom)	70 %	Mechanical and Housing	
Operating and Electrical		Bulb Finish	Frosted
Line Frequency	50 to 60 Hz		

Bulb Material	Plastic
Product Length	1,200 mm
Bulb Shape	T8
Approval and Application	
Energy Saving Product	Yes
Approval Marks	RoHS compliance UL certificate DLC compliance
Product Data	
Order product name	10.5T8/MAS/48-850/MF16/P 10/1

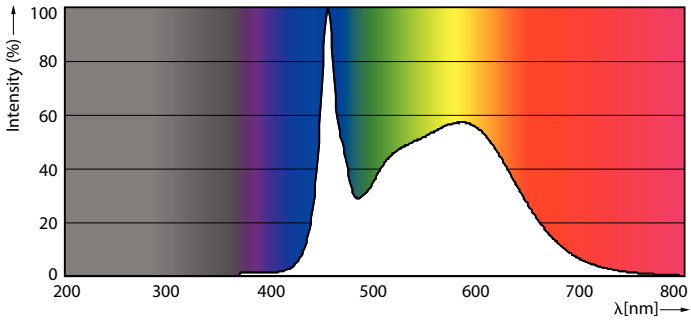
Full product name	10.5T8/MAS/48-850/MF16/P 10/1
Order code	929002325334
Material Nr. (12NC)	929002325334
Numerator - Quantity Per Pack	1
EAN/UPC - Product/Case	046677575502
Numerator - Packs per outer box	10
EAN/UPC - Case	50046677575507

Dimensional drawing

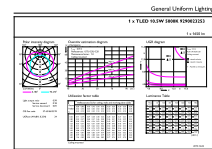


Product	D1	D2	A1	A2	A3
10.5T8/MAS/48-850/MF16/P 10/1	25.7 mm	28 mm	1,198 mm	1,205 mm	1,212 mm

Photometric data

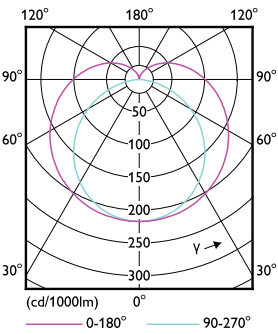


Spectral Power Distribution Colour - 10.5T8/MAS/48-850/MF16/P 10/1



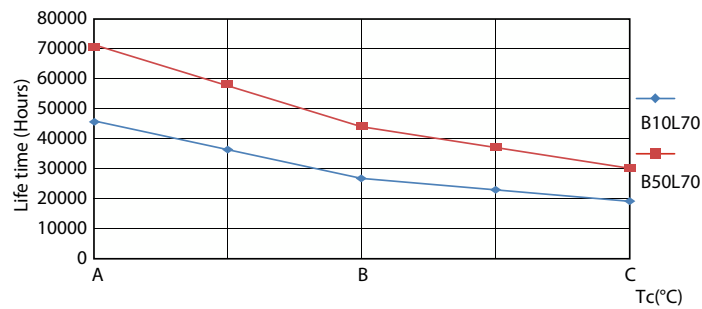
General uniform lighting - 10.5T8/MAS/48-850/MF16/P 10/1

Photometric data

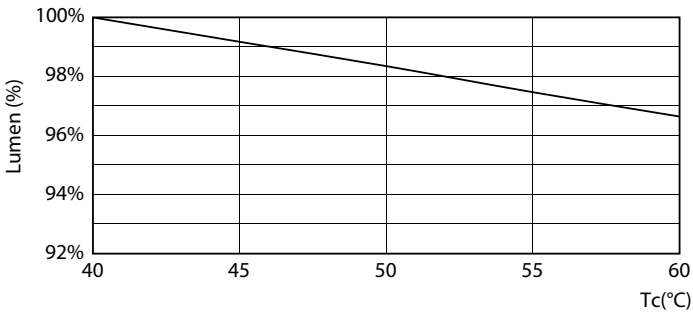


Light Distribution Diagram - 10.5T8/MAS/48-850/MF16/P 10/1

Lifetime

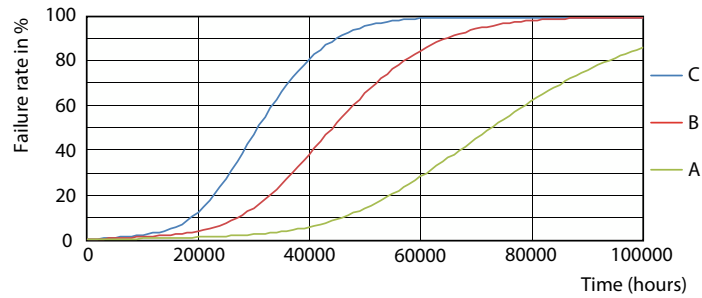


Life Expectancy Diagram - 10.5T8/MAS/48-850/MF16/P 10/1



Lumen Maintenance Diagram - 10.5T8/MAS/48-850/MF16/P 10/1

Life Expectancy Diagram - 10.5T8/MAS/48-850/MF16/P 10/1



Life Expectancy Diagram - 10.5T8/MAS/48-850/MF16/P 10/1

Lifetime



Lumen Maintenance Diagram - 10.5T8/MAS/48-850/MF16/P 10/1

