

T8

14T8/LED/48-5CCT/MF18/G/DS 5/2 FB

Our TLEDs are available in InstantFit (Type A / Type C) or MainsFit (Ballast bypass / Type B) versions. The InstantFit lamps work on a broad variety of ballasts and LED drivers. Only InstantFit has over 15,000 lamp & ballast combinations delivering even light output, energy savings and a long lifetime. Our MainsFit products feature a double-ended design, simplifying installation while a proprietary safety circuit minimizes a shock risk. Lamp sizes range from 2-foot to 8-foot and U-bend with a variety of lumen outputs.

Product data

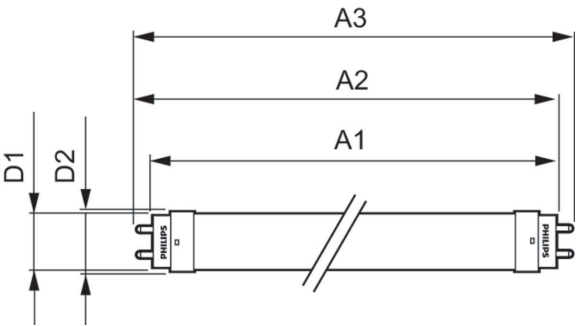
General Information	
Cap-Base	G13 [Medium Bi-Pin Fluorescent]
Nominal lifetime	50,000 hour(s)
Switching Cycle	50,000
Rated Lifetime (Hours)	50,000 hour(s)
Lighting Technology	LED
EU RoHS compliant	Yes
Light Technical	
Color Code	3000K/3500K/4000K/5000K/6500K
Beam Angle (Nom)	240 degree(s)
Luminous Flux	1,800 lm
Color Designation	3000K/3500K/4000K/5000K/6500K
Correlated Color Temperature (Nom)	3000 3500 4000 5000 6500 K
Luminous Efficacy (rated) (Nom)	128.00 lm/W
Color Consistency	<6
Color rendering index (CRI)	80
LLMF At End Of Nominal Lifetime (Nom)	70 %

Operating and Electrical	
Line Frequency	50 to 60 Hz
Input Frequency	50 to 60 Hz
Power Consumption	14 W
Lamp Current (Max)	120 mA
Lamp Current (Min)	56 mA
Starting Time (Nom)	0.5 s
Warm-up time to 60% light	0.5 s
Power Factor (Fraction)	0.9
Voltage (Nom)	120-277 V
UL Type	Type B - bypass the ballast
Temperature	
Ambient temperature range	-4 °F to 113 °F
T-Case Maximum (Nom)	158 °F
Controls and Dimming	
Dimmable	No

Mechanical and Housing	
Bulb Finish	Frosted
Bulb Material	Glass
Product Length	47-1/4 inch
Bulb Shape	T8
Approval and Application	
Energy Saving Product	Yes
Approval Marks	RoHS compliance UL certificate DLC compliance
Energy Consumption kWh/1000 h	- kWh

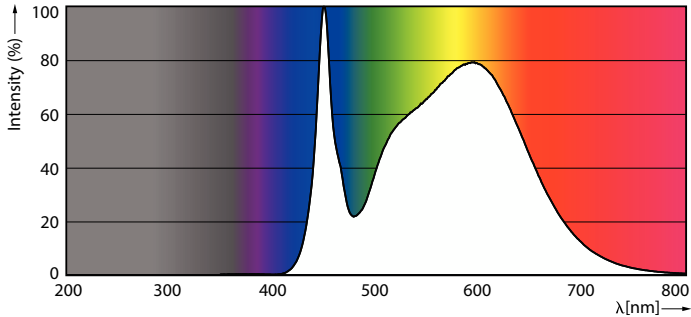
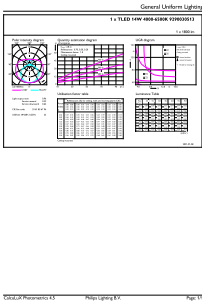
Product Data	
Order product name	14T8/LED/48-5CCT/MF18/G/DS 5/2 FB
Full product name	14T8/LED/48-5CCT/MF18/G/DS 5/2 FB
Order code	568501
Material Nr. (12NC)	929003051303
Numerator - Quantity Per Pack	1
EAN/UPC - Product/Case	046677568504
Numerator - Packs per outer box	5
EAN/UPC - Case	50046677568509

Dimensional drawing



Product	D1	D2	A1	A2	A3
14T8/LED/48-5CCT/ MF18/G/DS 5/2 FB	1-1/16 inch	1-1/8 inch	47-3/16 inch	47-1/2 inch	47-3/4 inch

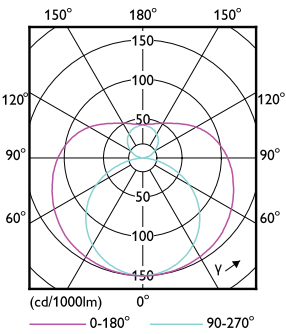
Photometric data



General uniform lighting - 14T8/LED/48-5CCT/MF18/G/DS 5/2 FB

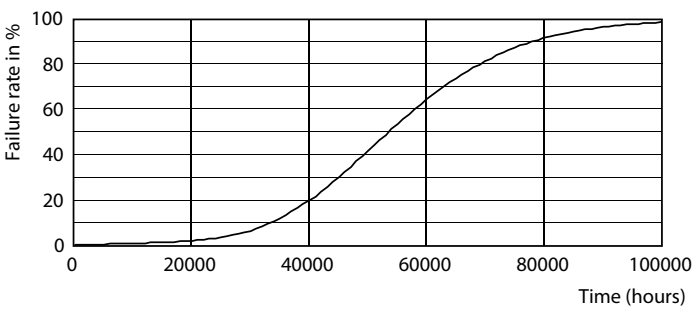
Spectral Power Distribution Colour - 14T8/LED/48-5CCT/MF18/G/DS 5/2 FB

Photometric data

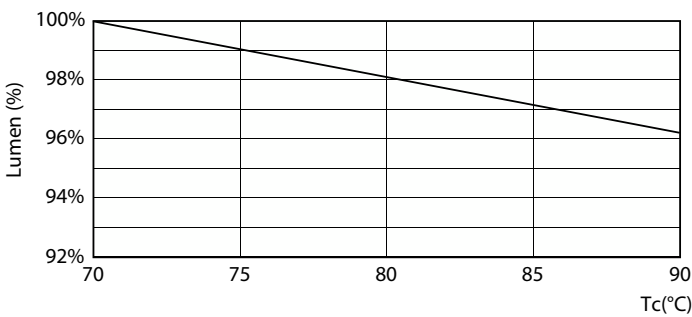


Light Distribution Diagram - 14T8/LED/48-5CCT/MF18/G/DS 5/2 FB

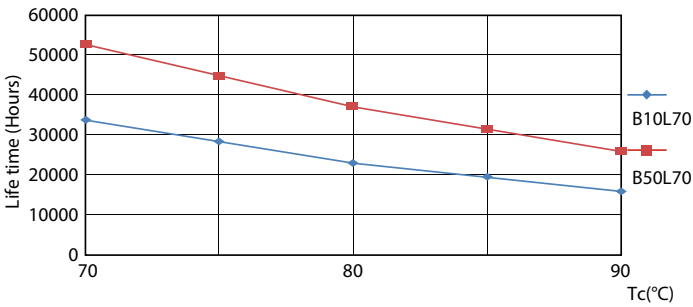
Lifetime



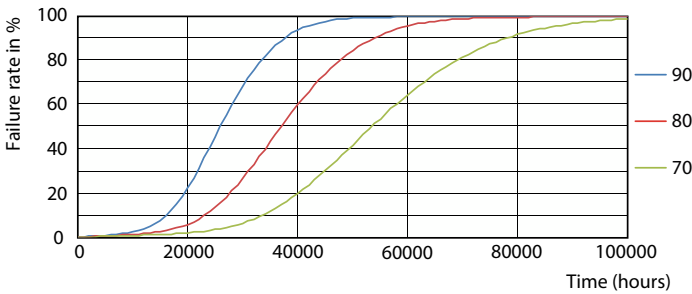
Life Expectancy Diagram - 14T8/LED/48-5CCT/MF18/G/DS 5/2 FB



Lumen Maintenance Diagram - 14T8/LED/48-5CCT/MF18/G/DS 5/2 FB

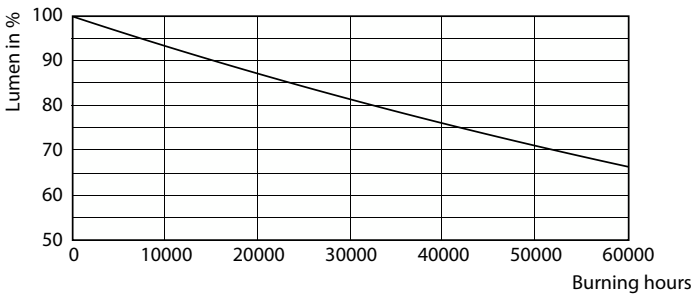


Life Expectancy Diagram - 14T8/LED/48-5CCT/MF18/G/DS 5/2 FB



Life Expectancy Diagram - 14T8/LED/48-5CCT/MF18/G/DS 5/2 FB

Lifetime



Lumen Maintenance Diagram - 14T8/LED/48-5CCT/MF18/G/DS 5/2 FB

