



PL-L

17PL-L/COR/22-840/MF22/G/4P 10/1

Philips InstantFit LED lamps make the transition to LED from CFL lamps as simple as replacing a lamp. With a wide array of color temperatures, the InstantFit LED lamps can quickly and effectively replace compact fluorescent lamps.

Product data

General Information	
Cap-Base	2G11
Nominal lifetime	50,000 hour(s)
Switching Cycle	50,000
Lighting Technology	LED
EU RoHS compliant	Yes

Light Technical	
Color Code	840 [CCT of 4000K]
Beam Angle (Nom)	160 degree(s)
Luminous Flux	2,200 lm
Color Designation	Cool White (CW)
Correlated Color Temperature (Nom)	4000 K
Luminous Efficacy (rated) (Nom)	129.00 lm/W
Color Consistency	<6
Color rendering index (CRI)	82
LLMF At End Of Nominal Lifetime (Nom)	70 %

Operating and Electrical	
Line Frequency	50 to 60 Hz
Input Frequency	50 to 60 Hz
Power Consumption	17 W
Lamp Current (Max)	154 mA
Lamp Current (Min)	68 mA

Wattage Equivalent	40 W
Starting Time (Nom)	0.5 s
Warm-up time to 60% light	0.5 s
Power Factor (Fraction)	0.9
Voltage (Nom)	120-277 V
UL Type	UL Type B

Temperature	
Ambient temperature range	-20 °C to 45 °C
T-Case Maximum (Nom)	65 °C

Controls and Dimming	
Dimmable	Yes

Mechanical and Housing	
Bulb Finish	Frosted
Bulb Material	Glass
Product Length	600 mm
Bulb Shape	PL-L

Approval and Application	
Energy Saving Product	Yes

Approval Marks	RoHS compliance UL certificate DLC compliance
----------------	---

Application Conditions

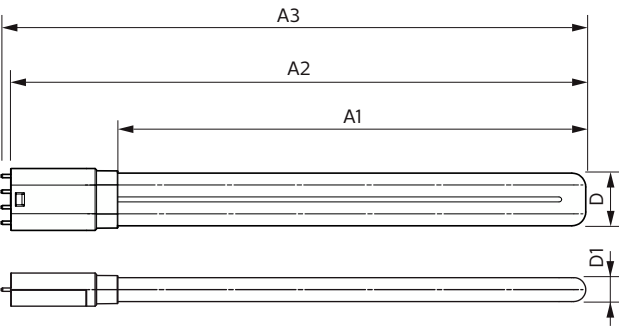
can it be used in closed luminaires	Yes
-------------------------------------	-----

Product Data

Order product name	17PL-L/COR/22-840/MF22/G/4P 10/1
Full product name	17PL-L/COR/22-840/MF22/G/4P 10/1

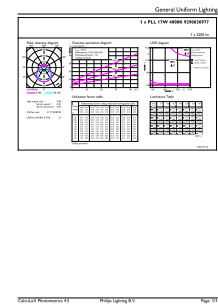
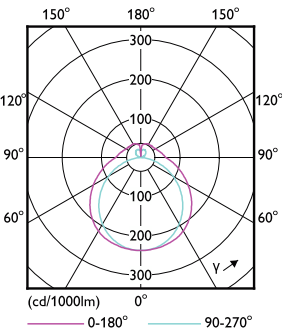
Order code	929003097704
Material Nr. (12NC)	929003097704
Numerator - Quantity Per Pack	1
EAN/UPC - Product/Case	046677575120
Numerator - Packs per outer box	10
EAN/UPC - Case	50046677575125

Dimensional drawing



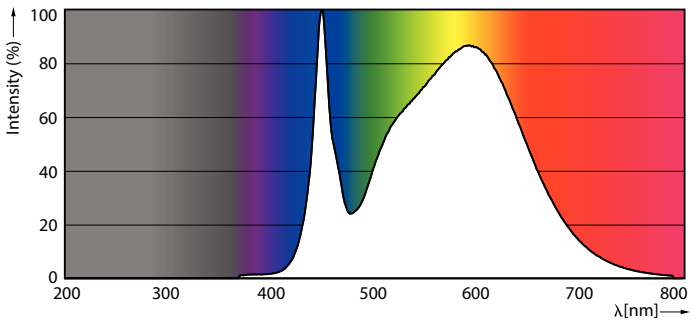
Product	D1	D2	A1	A2	A3
17PL-L/COR/22-840/MF22/G/4P 10/1	567 mm		560 mm		567 mm

Photometric data



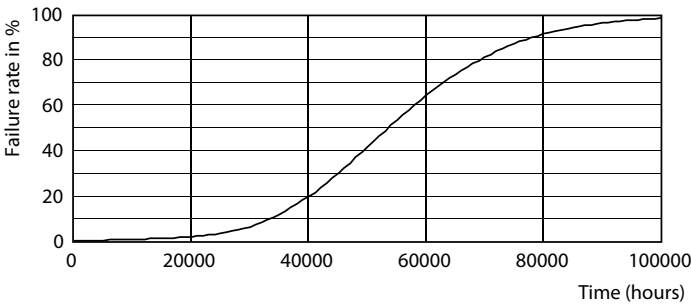
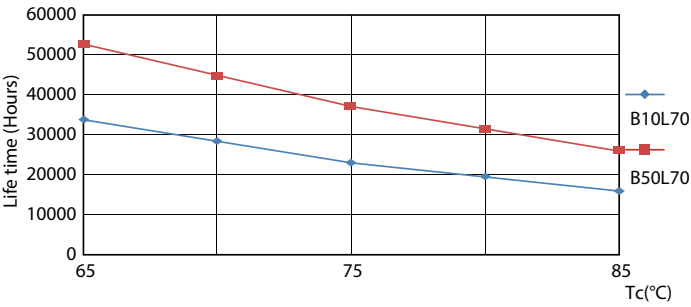
Light Distribution Diagram - 17PL-L/COR/22-840/MF22/G/4P 10/1

General uniform lighting - 17PL-L/COR/22-840/MF22/G/4P 10/1

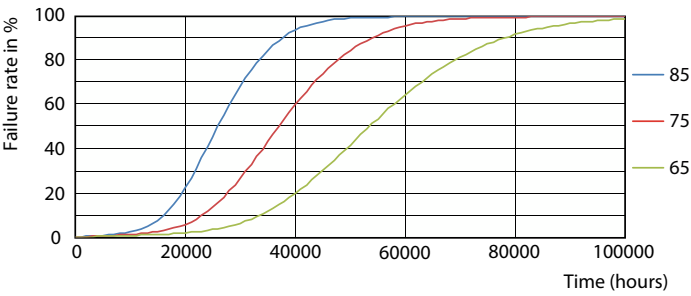


Spectral Power Distribution Colour - 17PL-L/COR/22-840/MF22/G/4P 10/1

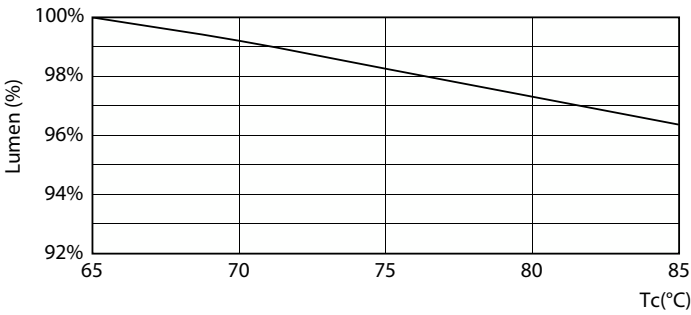
Lifetime



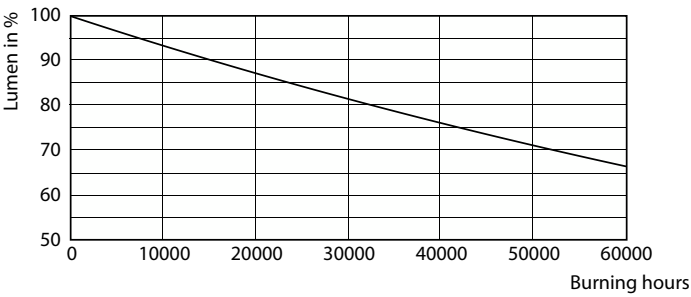
Life Expectancy Diagram - 17PL-L/COR/22-840/MF22/G/4P 10/1



Life Expectancy Diagram - 17PL-L/COR/22-840/MF22/G/4P 10/1



Life Expectancy Diagram - 17PL-L/COR/22-840/MF22/G/4P 10/1



Lumen Maintenance Diagram - 17PL-L/COR/22-840/MF22/G/4P 10/1

Lumen Maintenance Diagram - 17PL-L/COR/22-840/MF22/G/4P 10/1

