



MainsFit (UL Type-B) T5

8T5HE/COR/22-840/MF10/G 25/1

The MainsFit (UL Type-B) lamps are designed to be the perfect retrofit solution to move from traditional fluorescent lamps to energy saving LEDs. This ballast bypass lamp has everything needed built into the lamp with proven energy savings, long life, surge suppression and industry leading safety features. All lamps in the MainsFit family are double-ended to help simplify the installation. In addition, all lamps meet the Philips standards for light quality so that end users will be in a comfortable environment regardless of the MainsFit lamp type.

Product data

General Information	
Cap-Base	G5 [G5]
Nominal lifetime	50,000 hour(s)
Switching Cycle	50,000
Lighting Technology	LED
EU RoHS compliant	Yes

Light Technical	
Color Code	840 [CCT of 4000K]
Beam Angle (Nom)	200 degree(s)
Luminous Flux	1,050 lm
Color Designation	Cool White (CW)
Correlated Color Temperature (Nom)	4000 K
Luminous Efficacy (rated) (Nom)	131.00 lm/W
Color Consistency	<6
Color rendering index (CRI)	80
LLMF At End Of Nominal Lifetime (Nom)	70 %

Operating and Electrical	
Line Frequency	50 to 60 Hz
Input Frequency	50 to 60 Hz
Power Consumption	8 W
Lamp Current (Max)	84 mA
Lamp Current (Min)	31 mA
Wattage Equivalent	14 W
Starting Time (Nom)	0.5 s
Warm-up time to 60% light	0.5 s
Power Factor (Fraction)	0.9
Voltage (Nom)	120-277 V
UL Type	UL Type B

Temperature	
Ambient temperature range	-4 °F to 113 °F
T-Case Maximum (Nom)	158 °F

MainsFit (UL Type-B) T5

Controls and Dimming

Dimmable	Limited
----------	---------

Mechanical and Housing

Bulb Finish	Frosted
Bulb Material	Glass
Product Length	23-5/8 inch
Bulb Shape	T5

Approval and Application

Energy Saving Product	Yes
Approval Marks	RoHS compliance UL certificate

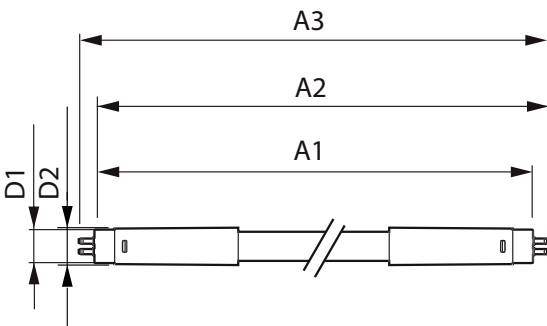
Application Conditions

can it be used in closed luminaires	Yes
-------------------------------------	-----

Product Data

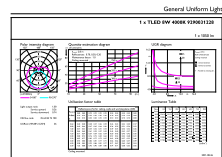
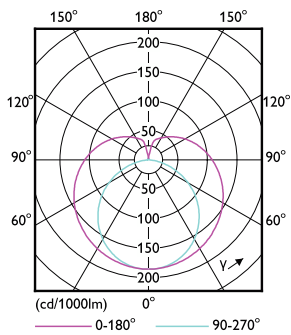
Order product name	8T5HE/COR/22-840/MF10/G 25/1
Full product name	8T5HE/COR/22-840/MF10/G 25/1
Order code	576157
Material Nr. (12NC)	929003122804
Numerator - Quantity Per Pack	1
EAN/UPC - Product/Case	046677576158
Numerator - Packs per outer box	25
EAN/UPC - Case	50046677576153

Dimensional drawing



Product	D1	D2	A1	A2	A3
8T5HE/COR/22-840/MF10/G 25/1	5/8 inch	3/4 inch	21-5/8 inch	21-7/8 inch	22-3/16 inch

Photometric data

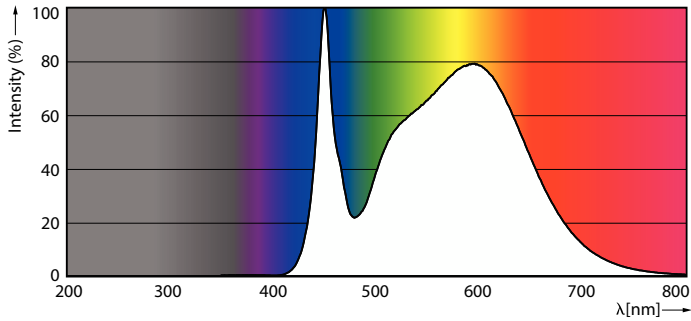


Light Distribution Diagram - 8T5HE/COR/22-840/MF10/G 25/1

General uniform lighting - 8T5HE/COR/22-840/MF10/G 25/1

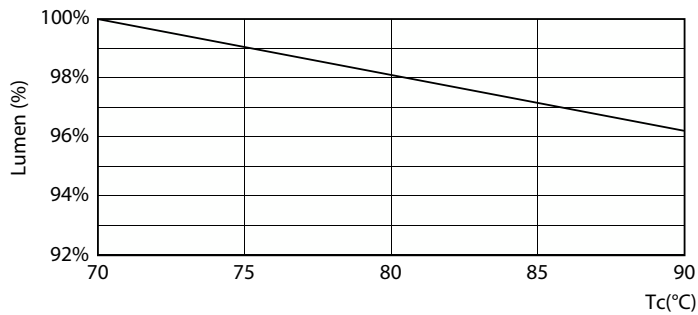
MainsFit (UL Type-B) T5

Photometric data

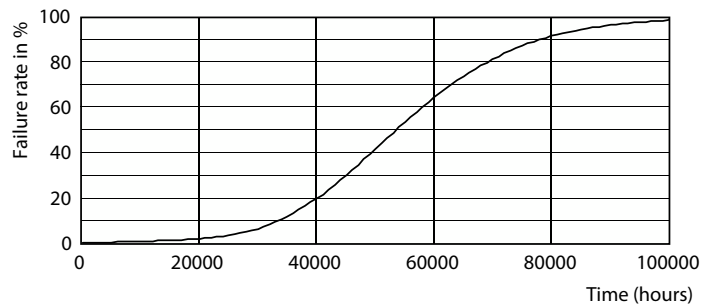


Spectral Power Distribution Colour - 8T5HE/COR/22-840/MF10/G 25/1

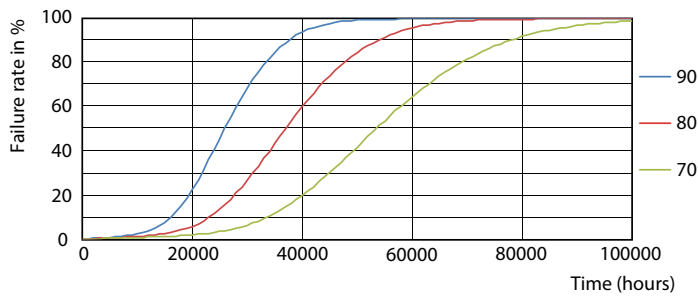
Lifetime



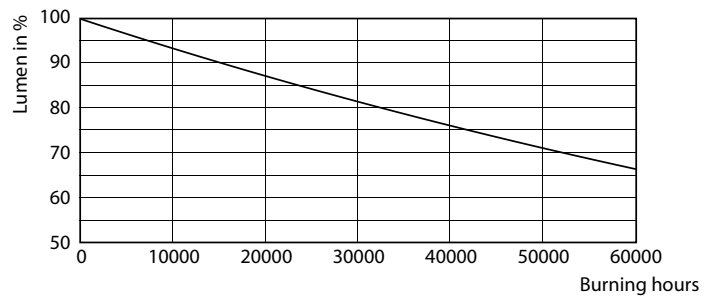
Lumen Maintenance Diagram - 8T5HE/COR/22-840/MF10/G 25/1



Life Expectancy Diagram - 8T5HE/COR/22-840/MF10/G 25/1



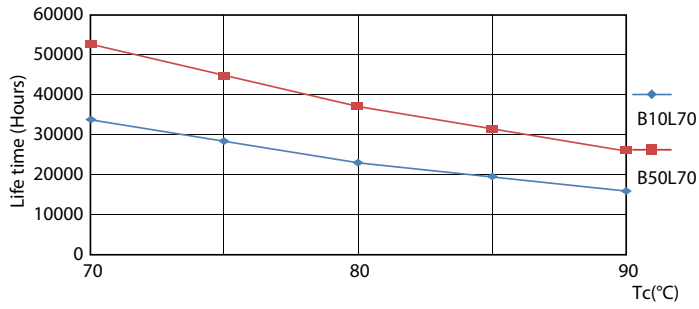
Life Expectancy Diagram - 8T5HE/COR/22-840/MF10/G 25/1



Lumen Maintenance Diagram - 8T5HE/COR/22-840/MF10/G 25/1

MainsFit (UL Type-B) T5

Lifetime



Life Expectancy Diagram - 8T5HE/COR/22-840/MF10/G 25/1

