



MainsFit (UL Type-B) T5

8T5HE/COR/22-850/MF10/G 25/1

The MainsFit (UL Type-B) lamps are designed to be the perfect retrofit solution to move from traditional fluorescent lamps to energy saving LEDs. This ballast bypass lamp has everything needed built into the lamp with proven energy savings, long life, surge suppression and industry leading safety features. All lamps in the MainsFit family are double-ended to help simplify the installation. In addition, all lamps meet the Philips standards for light quality so that end users will be in a comfortable environment regardless of the MainsFit lamp type.

Product data

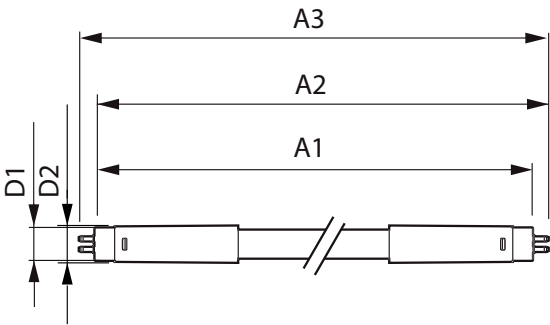
General Information		Operating and Electrical	
Cap-Base	G5	Line Frequency	50 to 60 Hz
Nominal lifetime	50,000 hour(s)	Input Frequency	50 to 60 Hz
Switching Cycle	50,000	Power Consumption	8 W
Lighting Technology	LED	Lamp Current (Max)	84 mA
EU RoHS compliant	Yes	Lamp Current (Min)	31 mA
Light Technical		Wattage Equivalent	14 W
Color Code	850 [CCT of 5000K]	Starting Time (Nom)	0.5 s
Beam Angle (Nom)	200 degree(s)	Warm-up time to 60% light	0.5 s
Luminous Flux	1,050 lm	Power Factor (Fraction)	0.9
Color Designation	Daylight	Voltage (Nom)	120-277 V
Correlated Color Temperature (Nom)	5000 K	UL Type	UL Type B
Luminous Efficacy (rated) (Nom)	131.00 lm/W	Temperature	
Color Consistency	<5	Ambient temperature range	-4 °F to 113 °F
Color rendering index (CRI)	80	T-Case Maximum (Nom)	158 °F
LLMF At End Of Nominal Lifetime (Nom)	70 %		

MainsFit (UL Type-B) T5

Controls and Dimming	
Dimmable	Limited
Mechanical and Housing	
Bulb Finish	Frosted
Bulb Material	Glass
Product Length	23-5/8 inch
Bulb Shape	T5
Approval and Application	
Energy Saving Product	Yes
Approval Marks	RoHS compliance UL certificate

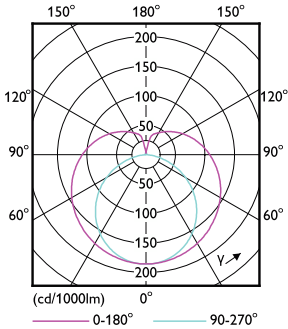
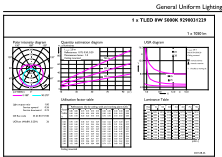
Product Data	
Order product name	8T5HE/COR/22-850/MF10/G 25/1
Full product name	8T5HE/COR/22-850/MF10/G 25/1
Order code	576165
Material Nr. (12NC)	929003122904
Numerator - Quantity Per Pack	1
EAN/UPC - Product/Case	046677576165
Numerator - Packs per outer box	25
EAN/UPC - Case	50046677576160

Dimensional drawing



Product	D1	D2	A1	A2	A3
8T5HE/COR/22-850/MF10/G 25/1	5/8 inch	3/4 inch	21-5/8 inch	21-7/8 inch	22-3/16 inch

Photometric data

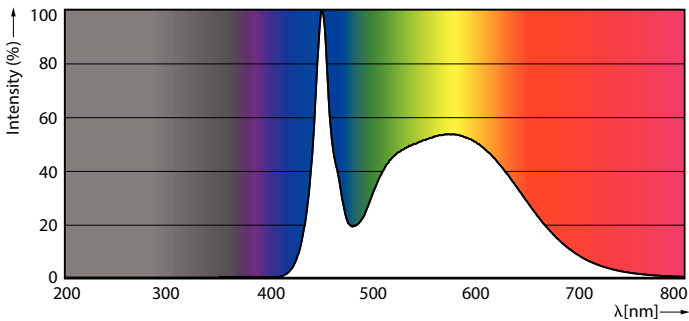


General uniform lighting - 8T5HE/COR/22-850/MF10/G 25/1

Light Distribution Diagram - 8T5HE/COR/22-850/MF10/G 25/1

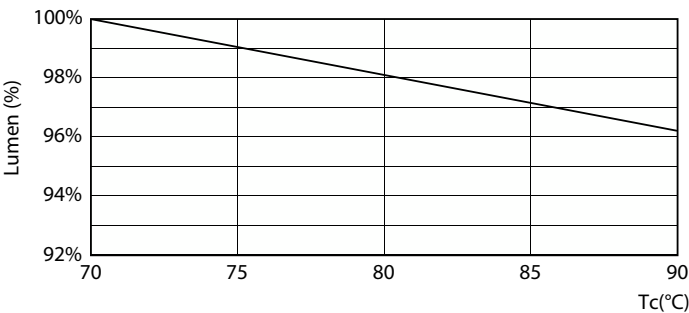
MainsFit (UL Type-B) T5

Photometric data

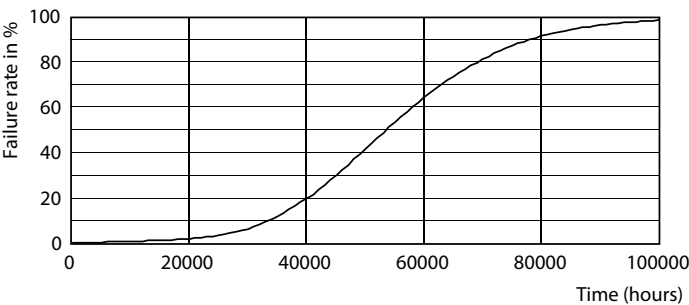


Spectral Power Distribution Colour - 8T5HE/COR/22-850/MF10/G 25/1

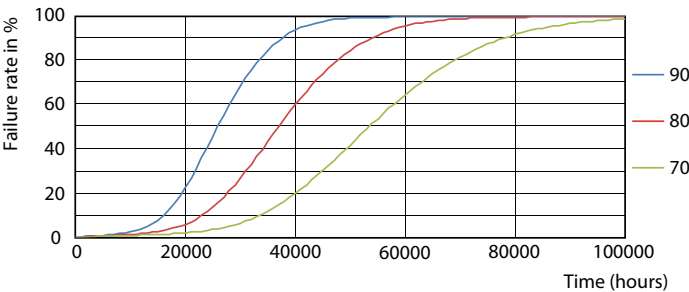
Lifetime



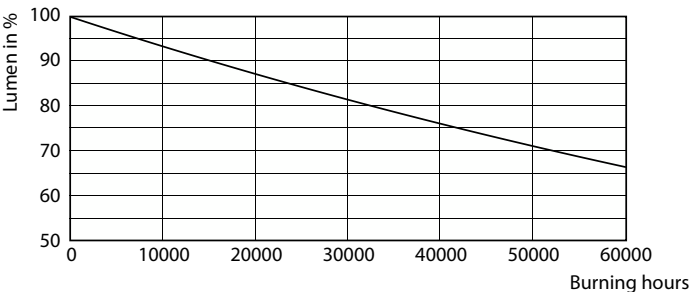
Lumen Maintenance Diagram - 8T5HE/COR/22-850/MF10/G 25/1



Life Expectancy Diagram - 8T5HE/COR/22-850/MF10/G 25/1



Life Expectancy Diagram - 8T5HE/COR/22-850/MF10/G 25/1



Lumen Maintenance Diagram - 8T5HE/COR/22-850/MF10/G 25/1

MainsFit (UL Type-B) T5

Lifetime



Life Expectancy Diagram - 8T5HE/COR/22-850/MF10/G 25/1

