



CorePro LED PLL



CorePro LED PLL EM/Mains 16.5W 840 4P

Philips CorePro LED PLL is the ideal uplamping solution for downlights & luminaires in a wide range of general lighting applications. It integrates a LED light source into a traditional fluorescent form factor to offer superb energy savings over a lifetime that's twice as long as fluorescent alternatives.

Product data

General Information	
Cap base	2G11
Nominal lifetime	30,000 h
Switching Cycle	200,000
Lighting Technology	LED
Flux measurement reference	Sphere
EU RoHS compliant	Yes
Light Technical	
Colour Code	840 [CCT of 4000K]
Beam angle (nom.)	160 degree(s)
Luminous Flux	2,100 lm
Colour designation	Cool White (CW)
Correlated Colour Temperature	4000 K
Luminous efficacy (rated) (nom.)	127 lm/W
Colour consistency	<6
Colour rendering index (CRI)	80
LLMF at end of nominal lifetime (nom.)	70 %
Flickering value (PstLM)	1
Stroboscopic effect	0.4
Photobiological safety according to EN 62471	RGO

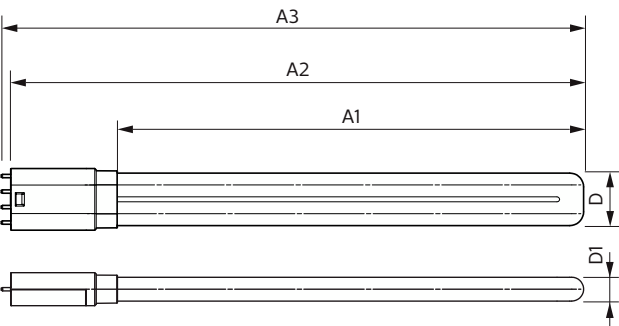
Operating and Electrical	
Line Frequency	50 to 60 Hz
Input frequency	50 to 60 Hz
Power Consumption	16.5 W
Lamp current (nom.)	83 mA
Starting time (nom.)	0.5 s
Warm-up time to 60% light	0.5 s
Power Factor (Fraction)	0.9
Voltage (nom.)	220-240 V
LED alternative to fluorescent lamp power	36 W
Inrush current at mains	9.4
Max. lamp no. on MCB B type 10A — Mains	82
Max. lamp no. on MCB B type 10A — EM ballast without Comp. Cap.	104
Max. lamp no. on MCB B type 10A — EM ballast with Comp. Cap.	19
Max. lamp no. on MCB B type 16A — Mains	131
Max. lamp no. on MCB B type 16A — EM ballast without Comp. Cap.	166
Max. lamp no. on MCB B type 16A — EM ballast with Comp. Cap.	30
Ballast Compatibility	EM

CorePro LED PLL

Temperature	
Ambient temperature range	-20°C to 45°C
T-Case maximum (nom.)	70 °C
Controls and Dimming	
Dimmable	No
Mechanical and Housing	
Lamp Finish	Frosted
Bulb material	Glass
Product length	400 mm
Bulb shape	PL-L
Approval and Application	
Energy Efficiency Class	E
Energy-saving product	Yes
Approval marks	RoHS compliance TUV CE marking KEMA Keur certificate

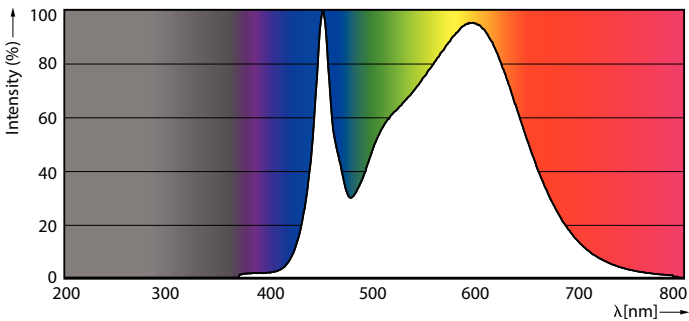
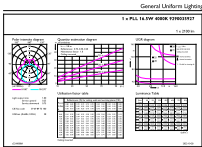
Energy consumption kWh/1,000 hours	17 kWh
EPREL registration number	1370828
Product Data	
Order product name	CorePro LED PLL EM/Mains 16.5W 840 4P
Full product name	CorePro LED PLL EM/Mains 16.5W 840 4P
Full EOC	872016915709500
Order code	15709500
Material no. (12 NC)	929003592702
SAP numerator – quantity per pack	1
EAN/UPC – Product/Case	8720169157095
Numerator – packs per outer box	10
EAN/UPC – Case	8720169157101

Dimensional drawing



Product	D1	D2	A1	A2	A3
CorePro LED PLL EM/Mains 16.5W 840 4P	17 mm		330 mm	405 mm	412 mm

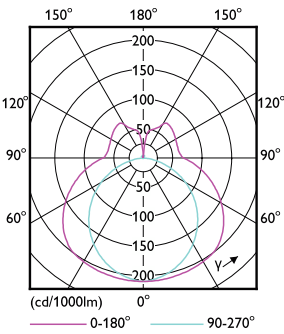
Photometric data



General uniform lighting - CorePro LED PLL EM/Mains 16.5W 840 4P

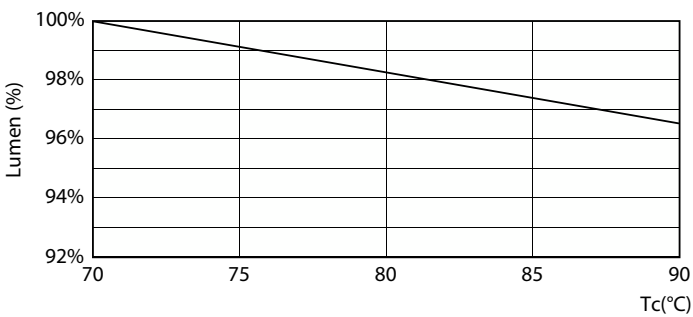
Spectral Power Distribution Colour - CorePro LED PLL EM/Mains 16.5W 840 4P

Photometric data

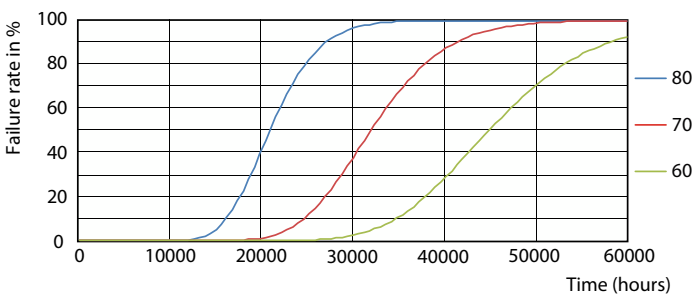


Light Distribution Diagram - CorePro LED PLL EM/Mains 16.5W 840 4P

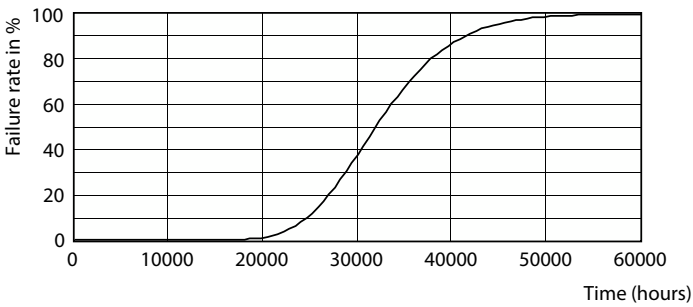
Lifetime



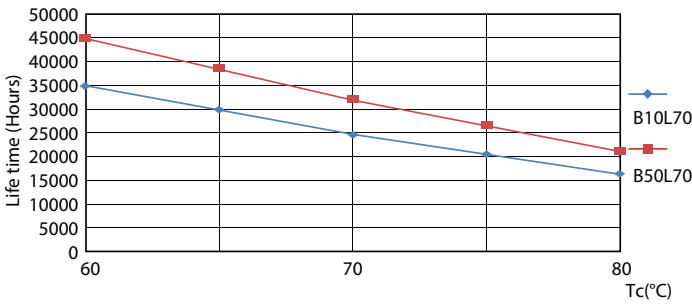
Lumen Maintenance Diagram - CorePro LED PLL EM/Mains 16.5W 840 4P



Life Expectancy Diagram - CorePro LED PLL EM/Mains 16.5W 840 4P



Life Expectancy Diagram - CorePro LED PLL EM/Mains 16.5W 840 4P



Life Expectancy Diagram - CorePro LED PLL EM/Mains 16.5W 840 4P

CorePro LED PLL

Lifetime



Lumen Maintenance Diagram - CorePro LED PLL EM/Mains 16.5W 840 4P

