



MASTER LEDtube InstantFit HF T5



MAS LEDtube HF 900mm HE 11.5W 830 T5

The Philips MASTER LEDtube integrates a LED light source into a traditional fluorescent form factor. Its unique design creates a perfectly uniform visual appearance, which cannot be distinguished from traditional fluorescent. These T5 lighting tubes are the right choice for absolute performance and are designed to stand up to everyday conditions. Unparalleled savings thanks to low energy consumption and an exceptionally long lifetime make these T5 LED tubes the choice for every demanding application.

Product data

General Information	
Cap-Base	G5
Nominal lifetime	60,000 hour(s)
Switching Cycle	50,000
Lighting Technology	LED
Flux measurement reference	Sphere
CE mark	Yes
EU RoHS compliant	Yes
Light Technical	
Color Code	830 [CCT of 3000K]
Beam Angle (Nom)	200 degree(s)
Luminous Flux	1,600 lm
Color Designation	White (WH)
Correlated Color Temperature (Nom)	3000 K
Luminous Efficacy (rated) (Nom)	139 lm/W
Color Consistency	<6
Color rendering index (CRI)	80

LLMF At End Of Nominal Lifetime (Nom)	70 %
Photobiological safety according to EN 62471	RG0
Operating and Electrical	
Line Frequency	30K to 100K Hz
Input Frequency	30K to 100K Hz
Power Consumption	11.5 W
Lamp Current (Max)	420 mA
Lamp Current (Min)	130 mA
Starting Time (Nom)	0.5 s
Warm-up time to 60% light	0.5 s
Power Factor (Fraction)	0.9
Voltage (Nom)	60-100 V
LED alternative to fluorescent lamp power	21 W
Inrush current at mains	-
Max. lamp no. on MCB B type 10A - Mains	-
Max. lamp no. on MCB B type 10A – EM ballast without Comp. Cap.	-

MASTER LEDtube InstantFit HF T5

Max. lamp no. on MCB B type 10A – EM ballast with Comp. Cap.	-
Max. lamp no. on MCB B type 16A – Mains	-
Max. lamp no. on MCB B type 16A – EM ballast without Comp. Cap.	-
Max. lamp no. on MCB B type 16A – EM ballast with Comp. Cap.	-
Ballast Compatibility	HF

Temperature

Ambient temperature range	-20 °C to 45 °C
T-Case Maximum (Nom)	55 °C

Controls and Dimming

Dimmable	Yes - Check ballast compatibility
----------	-----------------------------------

Mechanical and Housing

Bulb Finish	Frosted
Bulb Material	Glass
Product Length	900 mm
Bulb Shape	T5

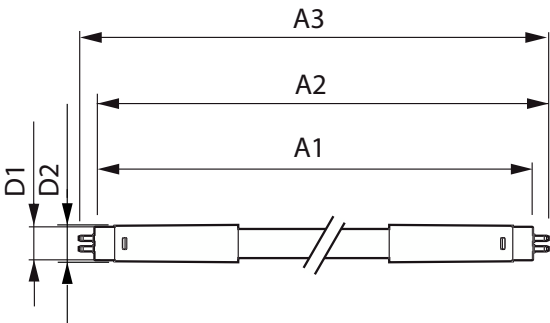
Approval and Application

Energy Efficiency Class	E
Energy Saving Product	Yes
Approval Marks	RoHS compliance TUV CE marking KEMA Keur certificate
Energy Consumption kWh/1000 h	12 kWh
EPREL Registration Number	1407663

Product Data

Order product name	MAS LEDtube HF 900mm HE 11.5W 830 T5
Full product name	MAS LEDtube HF 900mm HE 11.5W 830 T5
Full product code	872016916319500
Order code	929003596802
Material Nr. (12NC)	929003596802
Numerator - Quantity Per Pack	1
EAN/UPC - Product/Case	8720169163195
Numerator - Packs per outer box	10
EAN/UPC - Case	8720169163201

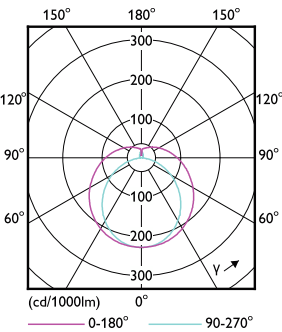
Dimensional drawing



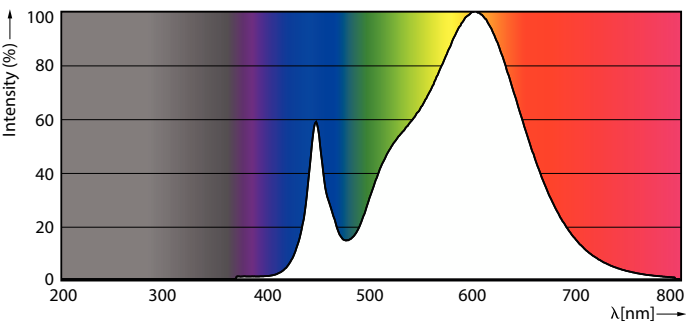
Product	D1	D2	A1	A2	A3
MAS LEDtube HF 900mm HE 11.5W 830 T5	15.5 mm	16/19 mm	849 mm	856 mm	863 mm

MASTER LEDtube InstantFit HF T5

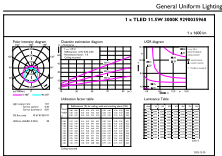
Photometric data



Light Distribution Diagram - MAS LEDtube HF 900mm HE 11.5W 830 T5



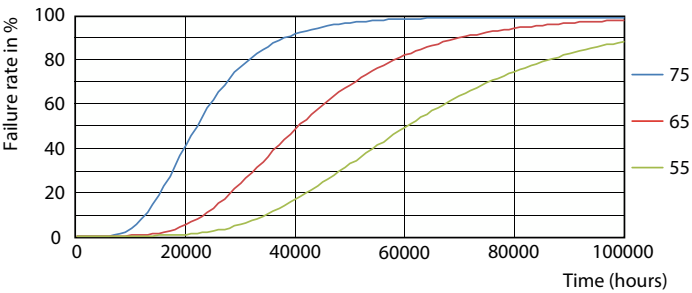
Spectral Power Distribution Colour - MAS LEDtube HF 900mm HE 11.5W 830 T5



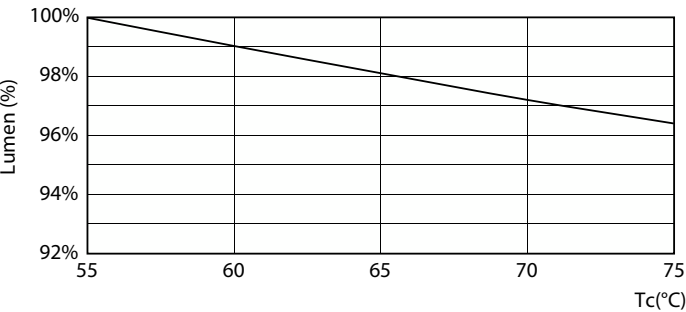
General uniform lighting - MAS LEDtube HF 900mm HE 11.5W 830 T5

General uniform lighting - MAS LEDtube HF 900mm HE 11.5W 830 T5

Lifetime



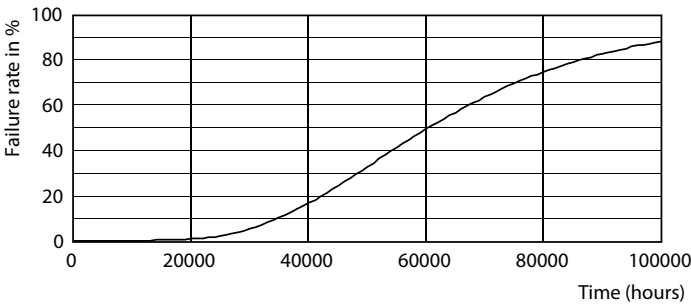
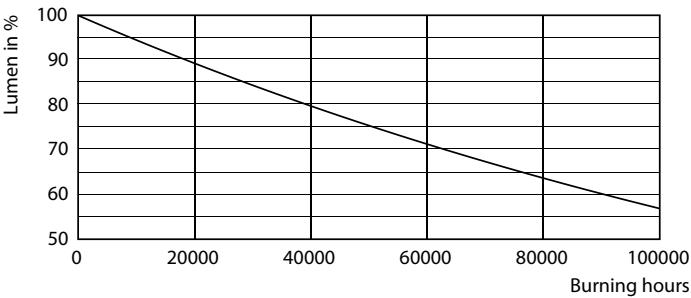
Life Expectancy Diagram - MAS LEDtube HF 900mm HE 11.5W 830 T5



Lumen Maintenance Diagram - MAS LEDtube HF 900mm HE 11.5W 830 T5

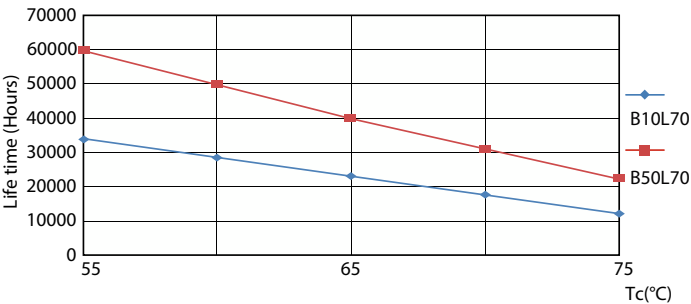
MASTER LEDtube InstantFit HF T5

Lifetime



Lumen Maintenance Diagram - MAS LEDtube HF 900mm HE 11.5W 830 T5

Life Expectancy Diagram - MAS LEDtube HF 900mm HE 11.5W 830 T5



Life Expectancy Diagram - MAS LEDtube HF 900mm HE 11.5W 830 T5

