

DC-Fit (UL Type-C) T5

14T5/COR/46-840/DF21/G/DIM UL-C 25/1

The DC-Fit (UL Type C) lamps are designed to be the perfect retrofit solution to move from traditional fluorescent lamps to energy saving LEDs. This lamp with DC driver has everything needed built into the lamp with proven energy savings, long life (up to 70k hours), better controllable performance and industry leading reliability features. All lamps in the DC-Fit family are double-ended to help simplify the installation. In addition, the DC lamps will have different lumen output with different dedicated DC drivers so that end users can have a comfortable environment with ideal light output.

Product data

General Information	
Cap-Base	G5
Nominal lifetime	50,000 hour(s)
Switching Cycle	50,000
Lighting Technology	LED
EU RoHS compliant	Yes
Light Technical	
Color Code	840 [CCT of 4000K]
Beam Angle (Nom)	200 degree(s)
Luminous Flux	2,100 3,550 lm
Color Designation	Cool White (CW)
Correlated Color Temperature (Nom)	4000 K
Luminous Efficacy (rated) (Nom)	142 lm/W
Color Consistency	<6
Color rendering index (CRI)	80
LLMF At End Of Nominal Lifetime (Nom)	70 %

Operating and Electrical	
Input Frequency	- Hz
Power Consumption	14 25 W
Lamp Current (Max)	720 mA
Lamp Current (Min)	200 mA
Wattage Equivalent	54 W
Starting Time (Nom)	0.5 s
Warm-up time to 60% light	0.5 s
Power Factor (Fraction)	0.9
Voltage (Nom)	38-46 V
UL Type	UL Type C

Temperature	
Ambient temperature range	-20 to +45 °C
T-Case Maximum (Nom)	65 °C

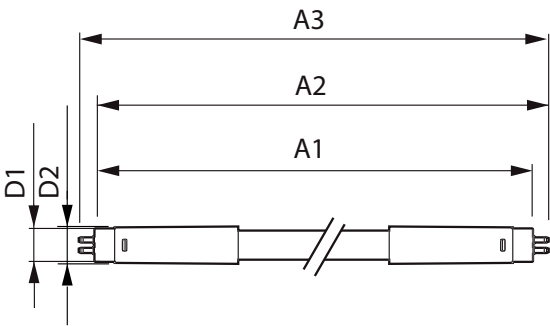
Controls and Dimming	
Dimmable	Only with specific dimmers

DC-Fit (UL Type-C) T5

Mechanical and Housing	
Bulb Finish	Frosted
Bulb Material	Glass
Product Length	1,200 mm
Bulb Shape	T5
Approval and Application	
Energy Saving Product	Yes
Approval Marks	RoHS compliance UL certificate DLC compliance
Application Conditions	
can it be used in closed luminaires	Yes

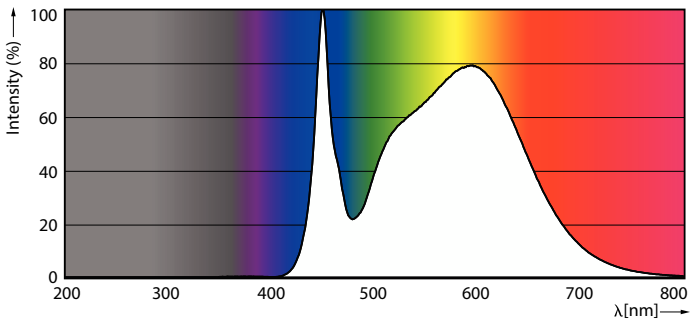
Product Data	
Order product name	14T5/COR/46-840/DF21/G/DIM UL-C 25/1
Full product name	14T5/COR/46-840/DF21/G/DIM UL-C 25/1
Order code	929003651504
Material Nr. (12NC)	929003651504
Numerator - Quantity Per Pack	1
EAN/UPC - Product/Case	046677583965
Numerator - Packs per outer box	25
EAN/UPC - Case	50046677583960

Dimensional drawing

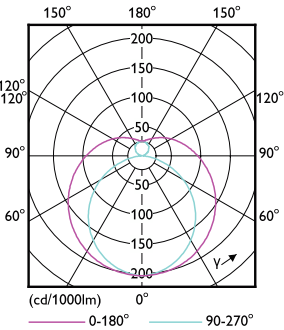


Product	D1	D2	A1	A2	A3
14T5/COR/46-840/DF21/G/DIM UL-C 25/1	15.3 mm	18.4 mm	1,147.8 mm	1,154.9 mm	1,162 mm

Photometric data



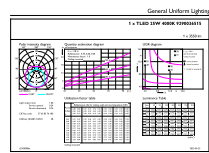
Spectral Power Distribution Colour - 14T5/COR/46-840/DF21/G/DIM UL-C 25/1



Light Distribution Diagram - 14T5/COR/46-840/DF21/G/DIM UL-C 25/1

DC-Fit (UL Type-C) T5

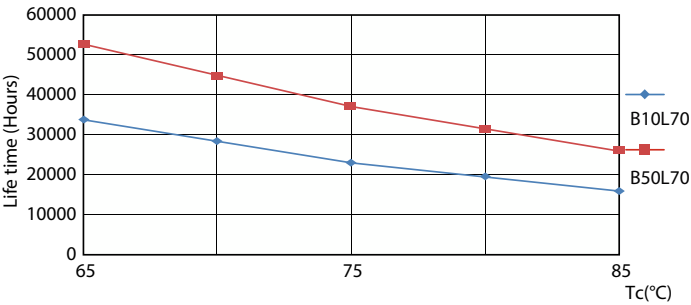
Photometric data



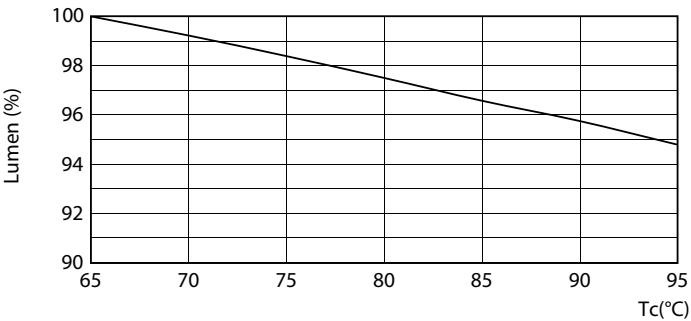
General Parameters 43 Page 10 of 17

General uniform lighting - 14T5/COR/46-840/DF21/G/DIM UL-C 25/1

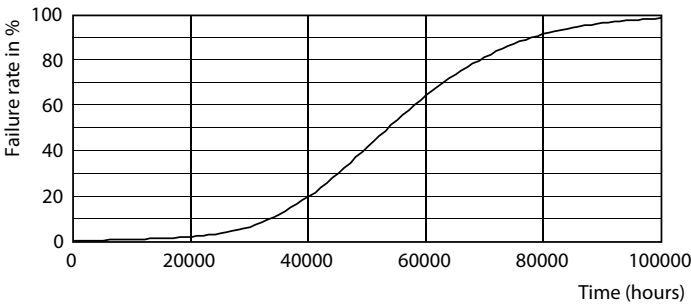
Lifetime



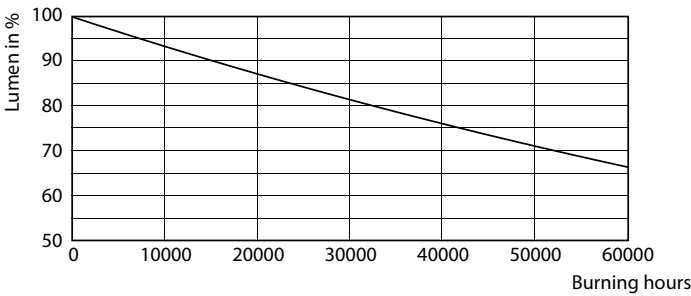
Life Expectancy Diagram - 14T5/COR/46-840/DF21/G/DIM UL-C 25/1



Lumen Maintenance Diagram - 14T5/COR/46-840/DF21/G/DIM UL-C 25/1



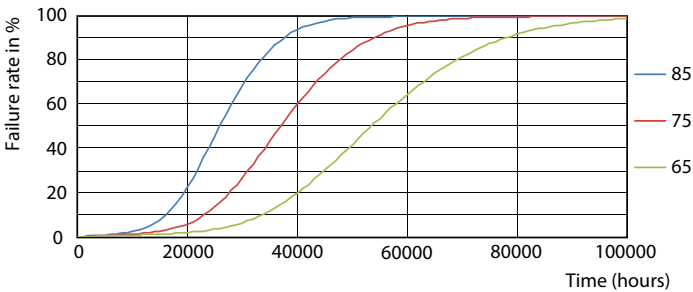
Life Expectancy Diagram - 14T5/COR/46-840/DF21/G/DIM UL-C 25/1



Lumen Maintenance Diagram - 14T5/COR/46-840/DF21/G/DIM UL-C 25/1

DC-Fit (UL Type-C) T5

Lifetime



Life Expectancy Diagram - 14T5/COR/46-840/DF21/G/DIM UL-C 25/1

